

# Weekly Poultry Report

## Eastern Pennsylvania And New Jersey

### WEEKLY SUMMARY LIVE HENS

Prices on light hens were unchanged, but trended higher within the range Demand good Offerings adequate in some instances, but barely adequate in others Buying interest for heavy hens declined somewhat, but continues generally fair Many quarters moving prior-committed flocks before making new commitments. Offerings continue barely adequate, but not as scarce as last week. Prices paid at farms Light Hens 8-9½, mostly 8½-9¼; Heavy hens 21c.

### Fogelsville

January 25, 1966

(Prices for dock weights, cents per lb. except where noted)

Hens, light, 7-9, mostly 7½-8½; Hens, heavy, none. Pullets, 22-29, mostly 25-27; Roasters, 20-28½, mostly 25-

28½. Ducks, 20½-29, mostly 26½-29; Drakes, 35-37½; Rabbits, 38-49½, mostly 41-47; Pigeons (per pair), 50-75 mostly 70-72½; Jumbo Squab, 85

Total Coops Sold 116

### Delmarva

January 28, 1966

Delmarva broiler and trier live trading moderate with too few sales to report prices in absence of auction Thursday Live supplies about in balance with needs.

Snow disrupted farm pickups in instances. Interest improving for next week, though remaining non-aggressive in many markets

Estimated slaughter for Friday and Saturday, 666,000 head, compared to 743,000 last weekend.

### Eastern Shore Exchange

#### WEEKLY SUMMARY

Broiler and trier live prices for the three-day, Monday through Wednesday, mar-

ket averaged 18.95 cents per lb. this week, losing last week's two-cent gain.

Prices paid ranged from a high of 20.0 cents on Monday to a low of 17.9 cents on Wednesday.

Sales for the period totaled 695,000 head. No comparison with last week's total can be made because the regular Thursday market was postponed until Friday this week

### Brothens House

The Brethren's House in Bethlehem has been the site of varied historical events. Originally planned and used as a residence for single men of Bethlehem, the House was built in 1748 During the Revolutionary War, seven hundred wounded soldiers of the Continental Army occupied the House. In 1814, the building was significantly altered to become the "Young Ladies Seminary"

Every Series E United States Savings Bond ever sold continues to earn interest as a result of extensions granted on the life of the Bonds

# Weekly New York Egg Mkt.

From Monday, January 24 to Friday, January 28

	Mon.	Tues.	Wed.	Thurs.	Fri.
<b>WHITE</b>					
Ex Fcy. Hywts	43	43	43	43	43
Fcy Hywts.	41½	41½	41½	41½	41½
Fcy Med	37	37 38	38	38	38
No 1 Med.	36	36 37	37	37	37
Pullets	33½	33½ 34½	34½	34½	34½
Peewees	28½	28½ 29½	29½	30½	30½
<b>BROWN</b>					
Ex Fcy. Hywts.	43	43	43	43	43
Fcy. Hywts.	41½	41½	41½	41½	41½
Fcy Med.	37	37 38	38	38	38
Pullets	33½	33½-34½	34½	34½	34½
Peewees	28½	28½ 29½	29½	30½	30½
<b>MIXED</b>					
Fcy. Hywts.	40	41	41	41	41
Standards	38	39	39	39	39
Checks	32	32	31	31	31

TREND Offerings light but well balanced for limited local needs

Copyright 1966 by Urner Barry Publications

### New Holland

(Continued from Page 2)

#### HORSES

January 24, 1966

Horses sold slow to bare steady with 232 head offered Riding horses, 115-350, driving horses, 115-275, killers, 5½-6 cents per lb Mules in pairs, 250-450, single 125-250 Draft horses in pairs, 300-550, single, 125-260 Pony mares and geldings, 15-70

#### HOGS

January 24, 1966

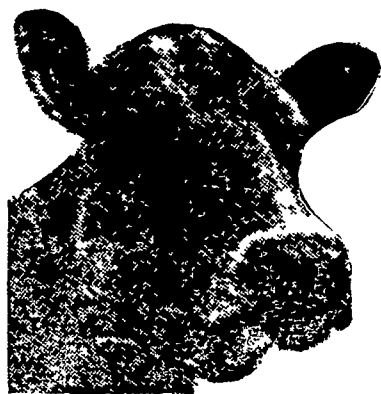
Hogs at wholesale were

steady while retailers paid 50 cents more this week as 423 head changed hands. Retail, 31-32 50, wholesale (US 1-3), 30-30 50, heavy weights 28 75-30 50 No sows or shoats were listed

#### CALVES

January 24, 1966

With only 60 head offered this week sales averaged \$1-52 higher Choice, 35-42; Good and Low Choice, 31-34 50, Standard, 28 50-30 50; Common, 25-28 There were no Prime animals sold this week



# KETOSIS TREATMENTS

## AVAILABLE IN LIQUID or PELLETS

### AGWAY KETOSIS TREATMENT —

This is a feed grade propylene glycol. Ketosis is a metabolic disease of high producing dairy cows which has plagued dairymen for many years. Most dairy scientists agree that primary ketosis is caused by an acute glucose deficiency. Because propylene glycol when taken into the body is a ready source of glucose, it acts by helping to make up this deficiency. Propylene glycol is used in Agway's Ket-A-Way feed for prevention of ketosis, but there is a real need for propylene glycol in liquid form for either prevention or treatment of the early stages of ketosis. Agway Ketosis Treatment will be available in one-gallon plastic bottles and in 55-gallon drums on special order.

### AGWAY KET-A-WAY

Agway Ket-A-Way is an all-pelleted, high energy feed that has been found to be the most effective Ketosis treatment and preventative on the market. It has these factors found to be effective in treating and preventing Ketosis. They are High Energy Propylene Glycol, Cobalt, and High Protein.

#### High Energy —

Ketosis basically is a dietary energy deficiency. Ket-A-Way helps to make up for that deficiency.

#### Propylene Glycol —

Ket-A-Way contains 5% propylene glycol, the latest and most successful aid in the prevention and treatment of Ketosis. Propylene glycol has been found as effective . . . and in some instances even more effective, than lactates or propionate. At the same time it has none of the palatability problems of these other two items.

CALL TODAY FOR MORE INFORMATION

## Garden Spot Unit, Inc.

(Former Farm Bureau and Eastern States Stores)

Lancaster 394-0541 or 394-3755

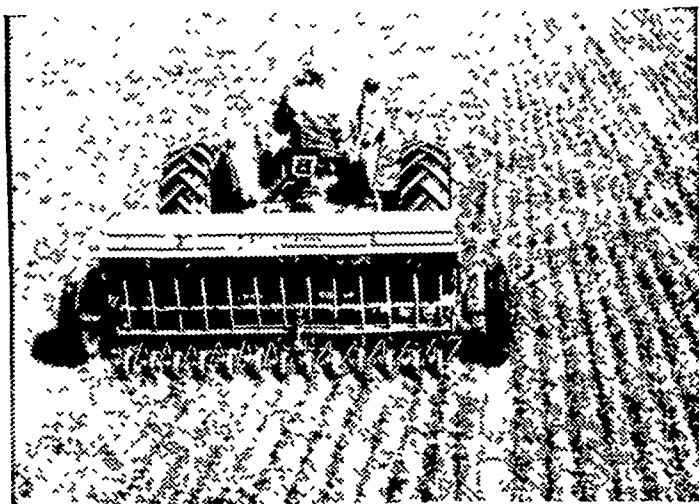
Quarryville 786-2126 or 786-2147

New Holland 354-2126

Honey Brook 215-273-3213

"Anyone May Buy From Agway"

# All Grain SEEDED RIGHT!



What a difference you'll see in the stand when seed is planted right! Allis-Chalmers Micro-Feed accuracy and Torsion-Spring uniformity do it. Micro-Feed meters seed exactly as set. Planting depth is uniform with the equalized pressure of adjustable torsion springs on disc openers and narrow "soft tire" press wheels. Only Allis-Chalmers drills give you this complete control. This is only part of the difference . . . let us show you the rest.

Finance for profit Ask us about Allis-Chalmers time payment plans.

Get the dollar-making difference with **ALLIS-CHALMERS** SALES & SERVICE



L. H. Brubaker  
Lancaster, Pa.

Allen H. Matz  
Farm Equipment  
New Holland, Pa.

Nissley Farm Service  
Washington Boro, Pa.

N. G. Myers & Son  
Rheems, Pa.

L. H. Brubaker  
Lititz, Pa.

Grumelli Farm Service  
Quarryville, Pa.

Chet Long  
Akron, Pa.