

Weekly Poultry Report

Eastern Pennsylvania And New Jersey

WEEKLY SUMMARY LIVE HENS

Prices on light hens 1/4-1/2c higher. Demand good. Offerings lighter than anticipated & barely adequate. Demand very good for heavy hens. Offerings barely adequate to short. In instances, some quarters unable to secure supplies from outside areas. Few open market roasters 7-8# were priced at 23-26c with no quality or grade deductions. Prices paid at farms: Light Hens 8-9 1/2, mostly 8 1/2-9c; Heavy Hens 21-22 1/2, mostly 21-22c.

Fogelsville January 18, 1966

(Prices for dock weights, cents per lb. except where noted.)

Hens, light type, range 7 1/2-10, mostly 7 1/2-8 1/2; Hens, heavy type, range 10-23, mostly 15-18; Pullets, range 22-38, mostly 28 1/2-34; Roasters, range 10-27 1/2, mostly 20-27 1/2; Ducks, range 18-36, mostly 23 1/2-29; Drakes, range 22-44 1/2, mostly 35-43 1/2; Turkeys, hens, range 21 1/2-32 1/2, mostly 30-32 1/2; Rabbits, range 25-51, mostly 42-49; Guinea, range, 20 1/2-45, mostly 35 1/2-44; Pigeons (per pair), range 70-80; Jumbo Squab, range, 85. Total coops sold: 754.

Delmarva

January 21, 1966

Delmarva broiler and fryer live prices remained steady.

Demand continued good for moderate auction offerings. Live supplies continued short of needs and lighter than desired in many instances.

Estimated slaughter for Friday and Saturday, 743,000 head, compared to 988,000 last week-end.

In the 24 hour preceding market close on Friday, prices reported paid at farms ranged from 19.7-21.2 cents per lb. on purchases of 911,900 head.

Eastern Shore Exchange

WEEKLY SUMMARY

Broiler and fryer live prices on the Eastern Shore Exchange averaged 20.96 cents per lb. this week, up 2.29 cents over last week's average.

Prices paid ranged from a high of 22.7 cents on Monday to a low of 19.6 cents on Tuesday.

Sales for the week totaled 1,345,800 head, a gain of 200,000 head over last week's totals.

PATZ Sales & Service

Barn Cleaners - Silo
Unloaders - Cattle Feeders

Robert K. Rohrer

Quarryville, R. D. 1
Hensel KI 8-2559

● Lancaster

(Continued from Page 2)
27.00, Mixed Good and Choice 800-975 lbs. 25.00-25.75.

CALVES 575 — Vealers steady to \$1.00 Higher. Choice vealers 40.00-44.50, Few Individuals 45.00-47.00, Good 36.00-40.50, largely 38.00-40.00, Standard 33.00-38.00, Utility 27.50-30.00, Few \$31.00-34.50, Cull 100-120 lbs. 26.00-28.00, 80-100 lbs. \$21.00-26.00, 60-80 lbs. 18.00-21.50.

HOGS 725 — Barrows and gilts closed about steady after being 25-50c Higher on Monday. Sows fully steady.

BARROWS AND GILTS — US 1-2 200-230 lb. closed at \$30.00-30.10, After several US 1, brought \$31.00-31.50, on Monday. US 1-3 200-240 lbs. 29.50-30.00, US 2-3 215-260 lbs. 28.50-29.25, couple lots US 1-2 170-175 lbs. 28.35-28.50.

SOWS — US 1-3 300-450 lbs. 23.00-24.00.

SHEEP 275 — Woolled slaughter lambs 50c Higher. Slaughter ewes scarce. Choice and Prime 80-100 lb. woolled lambs 30.50-32.00, One Lot Good 95 lbs 26.50. Couple small lots Prime 65-85 lb. Fall lambs 33.00-35.00.

● Lancaster Auction

(Continued from Page 2)
with a few 70-80 lbs. \$18.00-21.50.

HOGS 133 — Barrows and gilts steady to 50c Lower. US 1-3 200-240 lbs 29.50-30.00, Few 1-2 200-230 lbs. \$30.00-30.10, US 2-3 215-260 lbs 28.50-29.25, Couple lots 1-2 170-175 lbs. 28.35-28.50.

Weekly New York Egg Mkt.

From Monday, January 17th to Friday, January 21st

	Mon.	Tues.	Wed.	Thurs.	Fri.
WHITE					
Ex. Fcy. Hywts.	42	42 1/2	42 1/2	43	43
Fcy. Hywts.	41	41 1/2	41 1/2	41 1/2	41 1/2
Fcy. Med.	35 1/2	35 1/2	36 1/2	37	37
No. 1 Med.	34 1/2	34 1/2	35 1/2	35 1/2-36	36
Pullets	33	33	33	33 1/2	33 1/2
Peewees	28	28	28	28 1/2	28 1/2
BROWN					
Ex. Fcy. Hywts.	42	42 1/2	42 1/2	43	43
Fcy. Hywts.	41	41 1/2	41 1/2	41 1/2	41 1/2
Fcy. Med.	35 1/2	35 1/2	36 1/2	37	37
Pullets	33	33	33	33 1/2	33 1/2
Peewees	28	28	28	28 1/2	28 1/2
MIXED					
Fcy. Hywts.	39 1/2	40	40	40	40
Standards	38	38	38	38	38
Checks	32	32	32	32	32

TREND: Market showing a good movement on medium and pullets, and fine whites are generally cleared; but right here in the market, trading is not as active as at outside points.

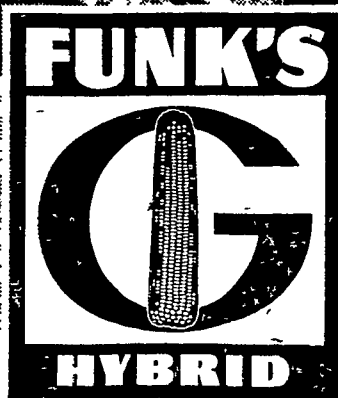
Copyright 1966 by Urner Barry Publications

● Chicago

(Continued from Page 2)
ed with 205,800 last week and 213,700 a year ago. Slaughter steers steady to 50 lower with most of the decline on weights over 1150 lbs. Heifers were fully steady and cows 50-100 higher. Bulls mostly 50 higher. In the carlot dressed meat trade, steer beef 50-100 lower. Heifer beef 100-150 lower. Cow beef steady to 100 higher.

Prime 1090-1400 lbs. 27.75-28.25, closing 27.75-28.00, High Choice and Prime 1050-1400 lbs. 27.25-28.00, High Choice and Prime 970-1050 lbs. 27.25-27.50 and several High Choice and mostly Prime 1275-1325 lb. wasty fat loads 27.00-27.35. Bulk Choice 900-1400 lbs. 26.25-27.50 Several loads 1400-1475 lbs 27.00, and one load Choice 1760 lbs. 24.00 Mixed Good and Choice 25.50-26.50, Good 24.25-26.00, Standard and Low Good 22.00-24.50, Utility and Standard 21.20-22.00.

SLAUGHTER STEERS —



Feed MORE Funk's-G Silage for greater profit

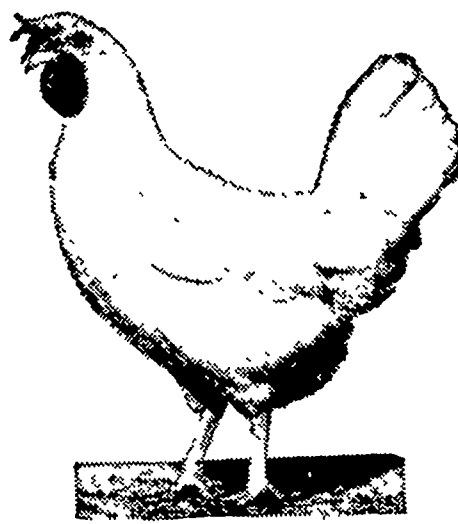
Your Hoffman Seed Man has latest information on High Capacity Funk's-G Silage Hybrids for Lancaster County. He can also help you produce higher-profit yields of husking corn. Consult him today.

Lots of grain... lots of TDN
that's what you want in corn silage...
that's what you get in Funk's-G!

Next fall your silage can be a higher-powered feed. You can produce more milkpower per ton of silage. The key is High Capacity Funk's G-Hybrids. Funk's G-Hybrids produce more tons of nutrients per acre—higher TDN content per ton of silage. And they let you move on up in yield with thicker planting and higher fertility.

A. H. HOFFMAN SEEDS, INC., LANDISVILLE, PENNA.
Serving farmers with finest quality seeds since 1899

POULTRYMEN!



Do you want a more profitable layer operation?

Here is a winning team!

- Wirthmore Hi Energy 17% Layer Mash (A complete feed)
 - Wirthmore Medicated Quickies (in times of stress)
- A highly nutritious feed with added antibiotics.



HEISEY FARM SERVICE
Lawn and Bellaire
665-3121 — 367-2321

PARADISE SUPPLY
Paradise
687-6292