

# Weekly Poultry Report

## Eastern Pennsylvania And New Jersey WEEKLY SUMMARY

**LIVE HENS**  
Prices on light hens unchanged to 1/2c lower. Offerings light in N.J. but adequate in Pa. Buying interest good. Supplies of heavy hens fully adequate for a fair demand. Few flocks of 7-8# cockerels sold on an open market basis @27-28c. Prices paid at farms: Light hens 7 1/2-9, mostly 8-8 1/2c; heavy hens 16-17 1/2, mostly 16c.

**TURKEYS**  
Demand excellent on 13-14 lb. hens, good on 17-18 lb. hens and all sizes of toms. Best interest exhibited by kosher buyers. Supplies on hens light, and, in instances, closely held. Offerings on toms barely adequate on 17-18 lb. sizes, adequate on 22-26 lb. weights.

Prices paid at farms for movement within two weeks: Hens 13-14# 34-36, mostly 36; 16-18 lbs. 30-33 mostly, 31-32c. Toms 16-18 lbs. 26-27, mostly 26; 22-26 lbs. 23-25, mostly 24-24 1/2c.

## Fogelsville

December 7, 1965

(Prices for dock weights, cents per lb. except where noted.)

Hens, light type 7-9 1/2, mostly 7 1/2-8 1/2; Hens, heavy type 8 1/2-23; Pullets 23 1/2-36 1/2, 28-32; Roasters 15-30, 26-30; Capons 35-38; Ducks 15-30 1/2, 21 1/2-26 1/2; Drakes 25-44, 35 1/2-41; Turkeys, toms 23-26 1/2; Turkeys, hens 35 1/2-38; Rabbits 30-43, 38-42; Guineas 41-53, 47 1/2-53; Pigeons (per pair) 52 1/2-1.15. 70-85; Jumbo Squab 80-82 1/2. Total coops sold: 1184.

## Eastern Shore Exchange

### WEEKLY SUMMARY

Broilers and fryers live prices on the Eastern Shore Exchange averaged 15.82 cents this week, practically the same as last week's average.

Prices ranged from a low of 14.9 cents on Tuesday to a high of 16.6 cents on Thursday

Sales for the week went

over one million head for the first week since October of this year. They totaled 1,138,000 head.

## Delmarva

December 10, 1965

Delmarva broiler and fryer live prices advanced more than 1/4-cent today with good demand for moderate auction offerings. Live supplies short on heavy sizes.

Estimated slaughter for Friday and Saturday, 959,000 head, 12,000 head more than last week's slaughter.

In the 24 hours preceding market close on Friday, broiler and fryer at-farm prices ranged from 15 1/4 to 16.6 cents per lb. on sales of 1,093,700 head

## ● New Holland

(Continued from Page 2)

23 00-28.00, Cull 21 00-23 00. 60 were sold. Fresh Holsteins, 275-600, Guernseys, 150-270 other breeds, 150-250 The bull brought 140; heifers, 140-210.

## HORSES

December 6, 1965

Horses sold steady with only 93 head offered Riding horses, 100-250, driving horses, 100-250, killers, 4-4 1/2 cents per lb Pony mares, 25-70, geldings, 20-70 Mules 125-190 Draft horses pairs, 350-500; single, 175-280.

## PATZ

Sales & Service

Barn Cleaners - Silo Unloaders - Cattle Feeders

**Robert K. Rohrer**

Quarryville, R. D. 1  
Hensel KI 8-2559

Lancaster Farming, Saturday, December 11, 1965—3

# Weekly New York Egg Mkt.

From Monday, December 6th to Friday, December 10th

	Mon.	Tues.	Wed.	Thurs.	Fri.
<b>WHITE</b>					
Ex. Fcy. Hywts.	46	46	46	46	46
Fcy. Hywts.	45	45	45	45	45 1/2
Fcy. Med	42 1/2	42 1/2	43 1/2	43 1/2	44 1/2
No. 1 Med.	41 1/2	41 1/2	42 1/2	42 1/2	43 1/2
Pullets	37	37	36 1/2-37	37	37
Peeweese	27	27	27	27	27
<b>BROWN</b>					
Ex. Fcy. Hywts.	47 1/2	47 1/2	47 1/2	47 1/2	47 1/2
Fcy. Hywts.	46	46	46	46	46
Fcy. Med.	41 1/2-42 1/2	41 1/2-42 1/2	43 1/2	43 1/2	44 1/2
Pullets	37	37	37	37	37
Peeweese	27	27	27	27	27
<b>MIXED</b>					
Fcy. Hywts.	45	45	45	45	45 1/2
Standards	43 1/2	43 1/2	43 1/2	43 1/2	43 1/2
Checks	36	36	36	36	36

TREND Market showing a good clearance of large and medium, particularly the latter with export movement still active.

Copyright 1965 by Urner Barry Publications

## HOGS

December 6, 1965

Hogs averaged \$2 higher as 411 head sold Retail, 29-75-30.25, wholesale (US 1-3), 28 85-29 75, heavyweights, 28-28 75. Sows, 20-24 75

## CALVES

December 6, 1965

Calves also averaged \$2 higher with 103 head sold Choice and Prime, 34-38, 130 lbs \$23 00, Good 65-95 lbs 24 00-26 00, Utility 21-33 50, Standard, 28-30 50; Common, 20-26

## ● Lancaster

(Continued from Page 2)

600 lbs 20 50-22 00, Late \$21 00-22 00

**SHEEP** 451- Wooled Slaughter lambs 50-1 00 Higher Ewes scarce and steady. Choice 70-95 lb. 26 00-27 00, One Lot Good and Choice 100 lbs \$25 00, One Lot Choice 130 lbs \$23 00, Good 65-95 lbs 24 00-26 00, Utility 21-33 50, Standard, 28-30 50; 90-24 00, Utility and Good Slaughter Ewes \$6.00-8 00.

## Vintage Sales Stables, Inc.

PARADISE, PENNA.

Bulls, steers, butcher cows,  
Hogs, lambs and veal calves  
Sold On Commission  
Sale every Tuesday 2 P.M.

Fat hogs and Feeder pigs sale  
Every Saturday at 10 A.M.  
For marketing information  
Phone Area Code 717-442-4181  
Box 100 Paradise, Pa.

10 mi. East of Lancaster on Rt. 30

Kenneth E. Hershey, Sales Manager

# ATTENTION DAIRYMEN

**ISF-HI-PHOS** — Positive source of PHOSPHOROUS

(Ratio - 1 1/2 to 1)

**ISF-HI-PHOS** — Contains Monosodium Phosphate

(300,000 Vit. D2 - 200,000 Vit. A - 100 Vit. E)

Propylene Glycol — Ethelenediamine Dihydriodide — (source of iodine)

**PLUS - 26 more Basic & Balanced Ingredients.**

(Does NOT contain Salt - (Sodium Chloride))

**ISF-HI-PHOS** — For maximum Production and Profit

Mixes well with any Dairy Ration or — feed free choice

Contact your dealer — or County ISF Representative

## CLAIR W. CASSEL

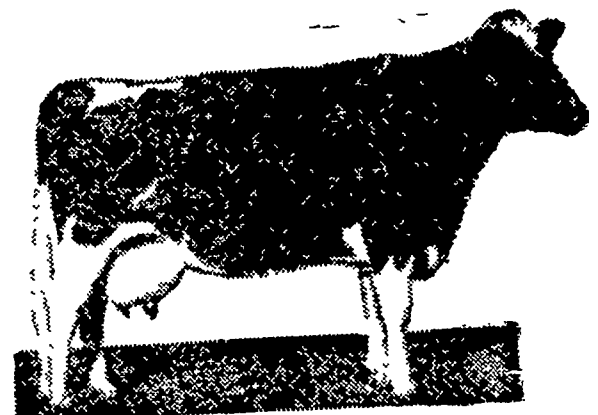
P.O. Box 173

Manheim, Pa.

Phone 665-4510

International Stock Food Corporation — Waverly, New York

## Your Best Dairy Feed Buy



# WIRTHMORE

## Hi-Cal Pellets

- Formulated & fortified for high production
- Molasses coated — highly palatable
- High in energy — 76 therms



HEISEY FARM  
SERVICE  
Lawn and Bellaire  
665-3121 — 367-2321

PARADISE SUPPLY  
Paradise  
687-6292