

MARKET NEWS REPORT

At Lancaster Yards

Weekly Review

November 26, 1965

CATTLE 2400 Slaughter steers under 1200 lbs closed the week steady to 50c Higher weights over 1200 lbs mostly steady Slaughter Heifers steady Cows steady to 50c Lower Bulls steady to weak Feeder steers steady. Supply included 35 percent Slaughter steers, 10 percent Slaughter Heifers, 20 percent Cows and Bulls with the balance feeder steers

SLAUGHTER STEERS Small lot High Choice and Prime 1085 lbs \$27.75, Choice 1000-1250 lbs 26.25-27.00 Some late \$27.00-27.75 High Good to Low Choice 25.50-26.50 Good 900-1250 lbs \$24.50-26.25, Standard to Low-Good \$21.00-24.00

SLAUGHTER HEIFERS Choice 800-915 lbs \$24.00-25.25 Mixed Good and Choice 700-900 lbs \$23.00-24.00 Good \$21.00-23.00

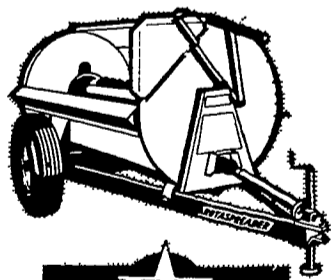
COWS Utility and High Yielding Cutter 14.00-16.25, None Over \$15.00 On Wednesday Cutter 13.25-14.50 Canner and Low Cutter \$11.00-13.25

BULLS Choice 23.00-24.60 Good 21.00-23.00 Utility and Commercial 18.50-21.50 few 1400-1850 lbs \$21.50-22.50, Cutter and Low Utility 17.00-18.50

FEEDER STEERS Load Choice with End Prime 400 lbs \$28.00 50 head Choice 400-450 lbs \$26.00, 80 head Good 350-375 lbs \$23.50 Choice \$24.00, Standard 550-600 lbs \$18.00-21.00

CALVES 460 Vealers steady Choice 33.00-36.00 Few High Choice and Prime \$37.00-38.00, Good 32.00-31.00 Standard 26.00-31.00 Utility 21.00-26.00

SPREADS BETTER ...7-WAYS



STARLINE ROTASPREADER

Only Starline Rotaspreader gives you so many spreading advantages. ★ Spreads any manure from liquids to frozen solids. ★ Smashing chain-flails pulverize material. ★ Simple construction reduces maintenance. ★ "Seal-of-Quality" galvanized steel body lasts years longer. ★ Bolted construction permits right- or left-hand assembly. ★ Watertight body saves valuable liquids. ★ Separate chassis hauls heaviest loads. Check with us soon for all the facts.

L. H. Brubaker

350 Strasburg Pike, Lanc. R. D. 3, Lititz
Phone Lancaster 397-5179
Strasburg 687-6002
Lititz 626-7766

Auction Only

November 24, 1965

CATTLE 370 Active slaughter steers under 1200 lb steady to 50 higher, weights over 1200 lb mostly steady. Cows steady to 50 lower, bulls about steady.

SLAUGHTER STEERS: Choice 1025-1250 lb \$26.25-27.75 High-Good to low-Choice \$25.50-26.50, Good \$24.50-26.25, Standard to low-Good \$21.00-24.00

SLAUGHTER HEIFERS: Choice 750-900 lb. \$23.00-25.00, Good \$21.00-23.00.

COWS Utility \$14.00-15.00, Cutter \$13.25-14.75, Canner and low Cutter \$11.25-13.25.

BULLS Good \$20.85-21.50 Utility and Commercial \$18.50-19.60, Cutter and low-Utility \$17.00-18.50.

HOGS \$25 Barrows and gilts 25-75 Higher Sows fully steady. US 1-2 190-210 lbs Barrows and gilts 26.50-27.00, US 1, 200-240 lbs 27.00-27.50, US 1-3 190-260 lbs 25.75-26.50, Late \$26.25-26.50 (Continued on Page 3)

Vintage Auction

November 23, 1965

CATTLE 508 Slaughter steers steady to strong. Cows 25-75c Higher Bulls steady. Supply included 40 percent Cows

SLAUGHTER STEERS: Few High Choice and Prime 27.85-28.50, Choice 1000-1275 lbs 26.50-28.00, 1275-1480 lbs 26.00-27.75, High Good to Low Choice \$25.50-26.50, Good 24.25-25.75, Standard to Low Good \$21.00-24.00

COWS: Utility and High Yielding Cutter 14.00-16.00, Few to \$16.50, Cutter 13.50-14.75, Canner and Low Cutter 11.75-13.50.

BULLS Utility and Commercial 18.50-21.60, Couple 1720-1950 lbs \$22.00-22.60, Couple Good \$21.00-21.60, Individual Choice at \$24.85

CALVES 510 Vealers steady Good and Choice \$30.50-34.00, Individual \$37.50, Standard 27.50-30.50, Utility 23.00-27.50, Cull 19.50-23.00, with 70-90 lb Cull 16.50-20.00

HOGS 88 Barrows and gilts \$11.00-12.50 Higher Bar-

New Holland Auction

November 25, 1965

CATTLE 692: Market steady to 50 cents lower with no High Choice or Prime offered

SLAUGHTER STEERS: Average Choice, 26-27.50; top Good to average Choice 24-26.

COWS: Cows sold steady to 50 cents lower Commercial, 13.50-15, with few to 16. Cutter and Low Cutter, 12.14

BULLS: Fat, block bulls sold from 21-24, trimming bulls, 19-21.

FEEDER STEERS: One lot of 11 Charolais, weighing 595 lbs, sold for 28; one load of 24 Blacks, averaging 700 lbs., 25.55. Plainer feeders, 20-23

CALVES 190: Prices advanced sharply over Monday's market Choice and

Prime, 31-38, Good and Low Choice, 30-34; Standard, 28-30; Common, 18-22.

COWS

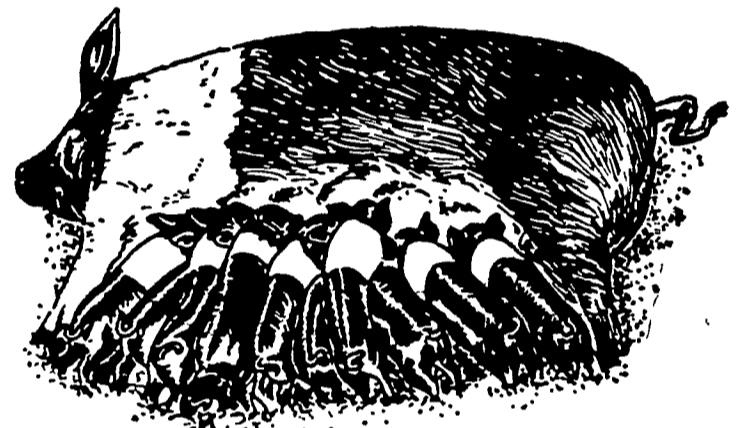
November 24, 1965
A slow trend dominated the sale of 159 cows, 8 bulls, and 4 heifers with fresh Hol- (Continued on Page 3)

Chicago Cattle

Weekly Review

CATTLE — Receipts 21,800, compared with 23,300 last week and 27,900 a year ago. Twelve market receipts for the three day period 164,700, compared with 184,600 last week and 201,700 a year ago. Compared with last weeks close, slaughter steers 25-50 higher, slaughter heifers steady to strong. Cows 50-100 (Continued on Page 3)

For MORE and STRONGER PIGS at FARROWING



FEED WAYNE BROOD SOW SUPPLEMENT—a specially formulated feed to help sows and gilts farrow big litters of strong, healthy pigs. Carefully blended vitamins, minerals and proteins properly balance farm grains.

Self-feed or hand-feed Wayne Brood Sow Supplement before breeding, during gestation and on through the nursing period.



Sows and gilts fed Brood Sow Supplement of the Wayne Research Farm farrowed an average of 11 pigs per litter ... average pig birth weight, 3.03 lbs.

MOUNTVILLE FEED SERVICE
R. D. 2, Columbia

HERSHEY BROS.
Reinholds

POWL'S FEED SERVICE
R. D. 1, Quarryville
R. D. 2, Peach Bottom

H. M. STAUFFER & SONS, INC.
Witmer

HEISEY FARM SERVICE
Lawn and Bellaire

DUTCHMAN FEED MILLS, INC.
R. D. 1, Stevens

MILLERSVILLE SUPPLY CO.
Millersville



GRUBB SUPPLY CO.
Elizabethtown

WHITE OAK MILL
R. D. 4, Manheim

MILLPORT ROLLER MILLS
R. D. 4, Lititz

ROHRER'S MILL
R. D. 1, Ronks

C. E. SAUDER & SONS
R. D. 1, East Earl

New Holland Sales Stables, Inc.

Sale Schedule

Monday: Horse Sale 10:00 A.M.
Tack Sale to Follow Horse Sale
Monday: Hog Sale 11:30 A.M.
Monday: Beef Cattle 2:00 P.M.
Sale Order — Bulls, Steers, Cows, Calves
Wednesday: Sale of Dairy Cattle 12:30 P.M.
Thursday: Sale of Beef Cattle 12:30 P.M.
Sale Order — Bulls, Steers, Cows, Calves

JOHN H. GINGRICH, Mgr.

Ph. New Holland 354-2194

New Holland, Pa.

Vintage Sales Stables, Inc.

PARADISE, PENNA.

Bulls, steers, butcher cows,
Hogs, lambs and veal calves
Sold On Commission
Sale every Tuesday 2 P.M.

Fat hogs and Feeder pigs sale
Every Saturday at 10 A.M.

For marketing information
Phone Area Code 717-442-4181
Box 100 Paradise, Pa.

10 mi. East of Lancaster on Rt. 30

Kenneth E. Hershey, Sales Manager

Attention! Attention! Attention!

NEW HOLLAND AND COLONIAL BALER TWINE

Get our low pre-season prices now!

A. B. C. GROFF, INC.

New Holland, Pa.

Ph: 354-8001