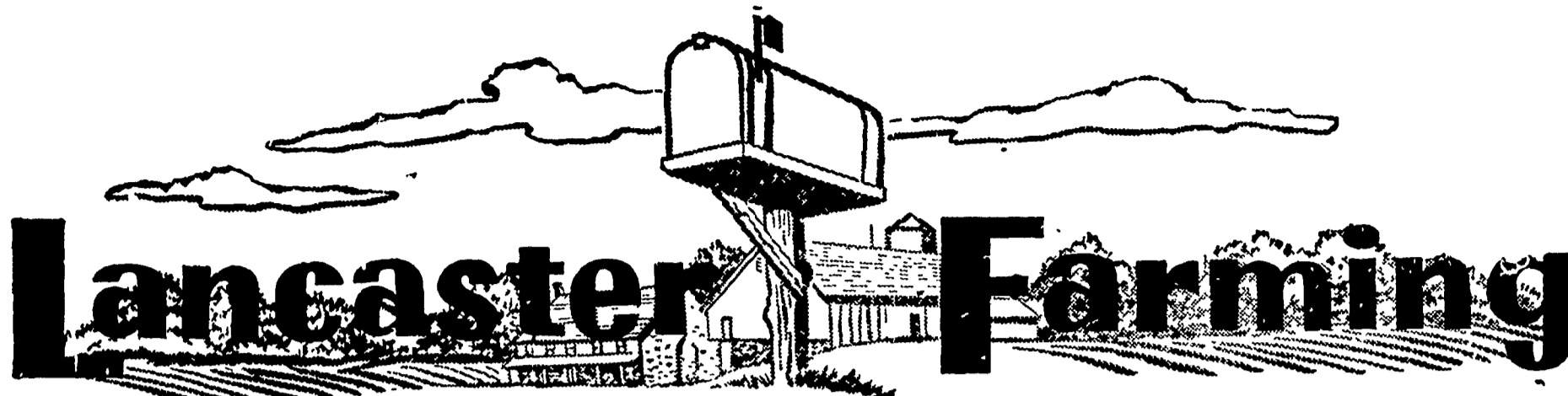


10th Anniversary Issue



VOL. 10 NO. 52

Lancaster Farming, Saturday, November 27, 1965

\$2 Per Year



LEROY ZIMMERMAN, (left) sells a plump Thanksgiving turkey to Mrs. Kenneth Snyder, 330 Madison Street, Shillington (center), and Mrs. Robert Williams, 1406 Fern Avenue, Reading. The Zimmerman Turkey Farm raises 25,000 Broad Breasted Bronze turkeys each year. L. F. Photo

From Eggs To Oven-Ready Birds Is Route Followed At Zimmerman's Turkey Farm

by Everett Newswanger
staff reporter

"Everywhere a gobble-gobble" describes in four words the Zimmerman Turkey Farm owned and managed by Mr. and Mrs. Leroy Zimmerman East Earl R1. Twenty-five thousand Broad Breasted Bronze turkeys each year strut and gobble their way to someone's dinner table. They roam the three Zimmerman turkey ranches and are housed in the turkey pole barns.

Zimmerman buys turkey eggs from breeder flocks and has them custom hatched. The little birds are sex separated at the hatchery and when they arrive at the farm they are placed in units that hold (Continued on Page 7)

Red Rose DHIA Annual Meeting Set For Jan. 20

Leroy, his father Eli Zimmerman and nephew Kenneth Martin start turkey poult's four times a year — February, April, June and July. The June and July babies are the ones that finish for the Thanksgiving and Christmas holidays. The cycle is started when

At the quarterly meeting of the board of directors of the Red Rose Dairy Herd Improvement Association, held Monday night at the Farm Credit Building, Lancaster, it was decided to hold the annual meeting on January 20. The place will be the Holiday (Continued on Page 7)

Poultry Advisory Council Offers 10-Point Program To Aid Market

HARRISBURG — A 10-point program to strengthen the poultry market in Pennsylvania has been recommended by the new State Poultry Marketing Advisory Council.

Council members, who were appointed by State Agriculture Secretary Leland H. Bull, suggested that these steps be taken:

Develop new products; improve consumer and marketer education; develop and promote the Pennsylvania turkey market; study production costs in Pennsylvania and other broiler-producing areas.

Maintain and improve relationships between industry and news media; study ways and means to improve broiler market news service; identify products grown and processed in Pennsylvania.

Seek improved government-

industry relationship; study freight rates and differentials, and maintain and improve production.

Robert B. Graybill, of Rohrerstown, was elected chairman of the council at its organizational meeting. Benjamin L. (Continued on Page 16)

Farm Income In Pa. Predicted Best Since 1960

Pennsylvania farm income from sale of products is showing substantial improvement over other recent years, according to State Secretary of Agriculture Leland H. Bull.

Official estimates of \$606,505,000 income for the first nine months in 1965, he said, show a 41 percent, or better than \$24 million, gain over the corresponding period in 1964.

Present projections, he indicated, are for the state's farmers to finish the current calendar year above the \$800 million cash sale mark for the first time since 1960.

He termed the improved income situation as a major achievement, and regarded it as all the more remarkable in view of persistent drought that prevailed in many areas during the growing season for the fourth year in a row.

Secretary Bull attributed the gains largely to new marketing programs developed during the Scranton administration. (Continued on Page 16)

Young Farmer Class Meets At Manheim

The Manheim Young Farmers Assn met last Monday night in the Agriculture Room at Manheim Central High School to hear a panel of industry men discuss hybrid corn, soil and fertilization.

The panel consisted of Russell Drumm and Benjamin Seem, both representatives of Eastland Corn Co., M. T. Kauffman and F. H. Bucher from A. H. Hoffman Seed Co.

Other corn company representatives present were: Lester Gehman, Agway, Inc.; Ammon Shelly, Pioneer; Raymond H. Moyer, Edgall Funk Co.

The next meeting will be held December 13 at the High School, and the topic will be Credit and Income Tax Filing.

Overflow From Fair Fund For Agr. Research

HARRISBURG — Research proposals submitted to the State Department of Agriculture by agricultural and allied industry organizations will be considered by an advisory Research Fund Committee on December 9, Secretary Leland H. Bull said this week.

Funds for agricultural research were provided recently by the State Legislature in an act signed by Governor William W. Scranton. The money will be made available from (Continued on Page 8)

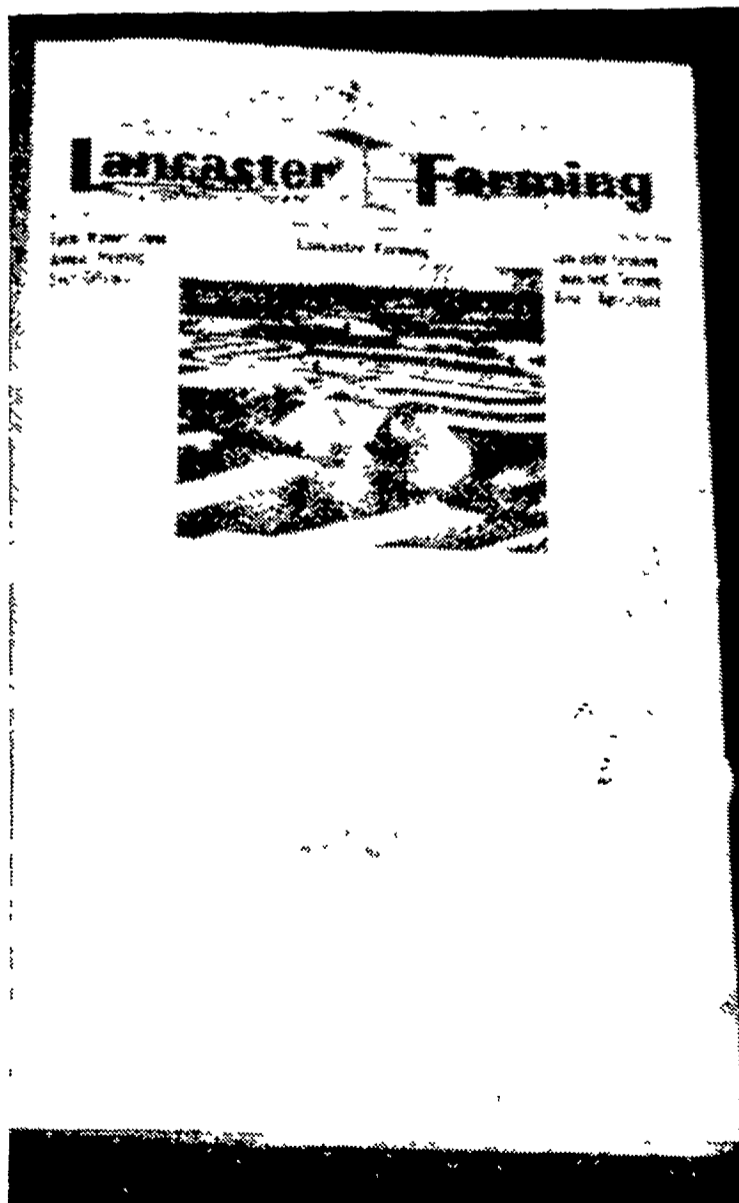
Farm Calendar

November 29 — 7 a.m. Deer Season Opens—Happy Hunting!

November 30 — 8 p.m. Lancaster County Executive Committee meets at Farm Credit Bldg. Lancaster, to plan annual meeting.

December 2 — 7 p.m. Ephrata Adult Farmer Class field trip to John Umble farm Chester County; meet at High School.

7:29 p.m. Garden Spot Young Farmer Class; subject, "Feedlot Planning"; speakers, Chas. Enloe and Howard Anderson of Pennsylvania Harvestore.



IF YOU RECOGNIZE this page then chances are you were one of 28,000 boxholders in Lancaster County who received this initial mailing ten years ago this month. This is page one, number one, volume one of Lancaster Farming. L. F. Photo