

**● Farm Calendar**  
(Continued from Page 1)

ty Agricultural Stabiliza-  
tion and Conservation Ser-  
vice and cooperating agen-  
cies meet to formulate Ag-  
ricultural Conservation  
Program plans for 1966 at  
ASCS office, Manheim Pike,  
Lancaster

—8 p.m. DHA directors  
quarterly meeting at Farm  
Credit Bldg., Lancaster

November 23—7:29 p.m.  
Garden Spot Young Farm-  
er Class at Garden Spot  
High School Agricultural  
room. Subject: "Feedlot  
Planning"

—8 p.m. Penn Manor  
Young Farmer Class to  
tour Penn Dairies plant on  
Route 230 Bypass. Group  
to meet at Penn Dairies  
lambles welcome

November 25—HAPPY  
THANKSGIVING

November 28—National 4-H  
Club Congress, Nov. 28-  
Dec. 2 at Conrad Hilton  
Hotel, Chicago

## New Inter-State Directors Named

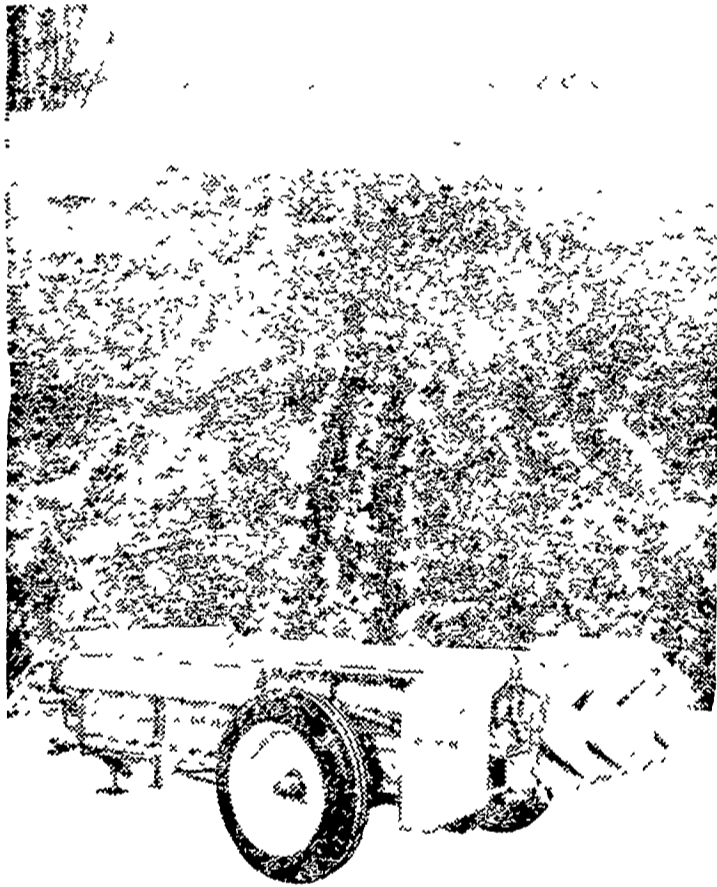
PHILADELPHIA — The In-  
ter-state Milk Producers Co-  
operative elected three new  
Pennsylvania directors and  
reelected eight other direc-  
tors for three terms. The ac-  
tion came at the start of the  
3,500-member organization's  
annual three-day meeting.

Elected to represent new  
districts were Melvin M.  
Brendle of East Earl R1, for  
one year; Roy A. Weaner Jr.,  
Gettysburg R6, for two years,  
and Robert B. McSparran,  
Peach Bottom R2, for three  
years.

Brendle represents District  
6, which includes Christiana,  
Paradise, Witmer and New  
Holland-Leola locals.

McSparran represents south-  
ern Lancaster County and  
Quarryville locals in District  
3.

## DOLLAR EFFICIENT SINGLE BEATER



Expect a pocket-saving price. The latest in simple design. See the Allis-Chalmers 140-S spreader for features that mean dollar efficiency. Won't freeze up, but sure chews up that packed frozen stuff and spreads it faster, easier.

You get five feed rate selections. Self-cleaning paddles. Low, wide box speaks for itself. Converts to 140 bushel rear-unloading trailer, too. An all-the-way winner.

Also see the NEW giant 180 bushel size. Or the compact 95. Two Allis-Chalmers farm loaders, too. C'mon in!

## LOADER, SPREADER SUPERIORITY ALLIS-CHALMERS

- |   |  |
|---|--|
| <b>L. H. Brubaker</b><br>Lancaster, Pa.             | <b>Allen H. Matz</b><br>Farm Equipment<br>New Holland, Pa. |
| <b>Nissley Farm Service</b><br>Washington Boro, Pa. | <b>N. G. Myers &amp; Son</b><br>Rheems, Pa.                |
| <b>Grumelli Farm Service</b><br>Quarryville, Pa.    | <b>L. H. Brubaker</b><br>Lititz, Pa.                       |
| <b>Chet Long</b><br>Akron, Pa.                      |  |

# WANTED

## Controlled Environment Started

# PULLET HOUSES

Must be willing to follow rigid management program.

## DeKalb York Dairymen's Dairyery

Box 1402, York, Pa.

Ph. 848-1770

Dairymen everywhere  
are getting more milk  
and more perfat  
with Ful-O-Pep  Dairy Feed

COCHRANVILLE

NEW HOLLAND

ELIZABETHTOWN

QUARRYVILLE

SALUNGA

STURGIS

See what Ful-O-Pep Cattle Feeds can do  
for YOUR milk production!

Passmore Supply Co.  
Cochranville, Pa.

Abb Supply Co.  
Elizabethtown

Harold H. Good  
Terre Hill

Good Feed & Grain  
Kirkwood

S. H. Hiestand & Co., Inc.  
Salunga

Shuffer & Sons, Inc.  
Witmer

J. C. Walker & Son, Inc.  
Gap, Penna.

Feed Mill, Inc.  
Leola, Penna.