

# Weekly Poultry Report

## Eastern Pennsylvania And New Jersey WEEKLY SUMMARY

### LIVE HENS

Prices for light type hens trended slightly higher under a good demand. Few lots sold slightly higher than reported range. Offerings barely adequate. Demand for heavy type hens fair for light supplies. Some processor supplementing needs with purchases from Delmarva & New England. Isolated flocks of 7-7½# roasters sold @ 24-25c with no grade deductions. Prices paid at farms for light type hens 7-8½c mostly 8-8½c; Heavy type hens 15-16c mostly 15-15½c.

### TURKEYS

Supplies of small type and fryer/roasters continued limited. Offerings of heavy type hens and toms fully adequate for a fair demand. Prices paid at farms: Heavy type hens 23c; toms 21½c.

## Fogelsville

October 26, 1965

(Prices for dock weights cents per lb. except where noted)

Hens, light type, range 7½-9, mostly 7½-8½; Hens, heavy type 8-16, 11-15; Pullets 20-35, 25-32½, Roasters 15-32, 24-28, Ducks 21-40, 23-27½, Drakes 15-39, 32-36, Turkeys, toms 22-24½; Turkeys, hens 28-33, Rabbits 12-34, 23-34; Guineas 40-57½, 42-50, Pigeons (per pair) 70-97½, 70-80. Total coops sold: 1227.

## Eastern Shore Exchange WEEKLY SUMMARY

Broilers and fryers live prices on the Eastern Shore Exchange averaged 15.99 cents per lb. this week, up nearly 2/10-cent from last week's average.

Prices paid ranged from a low of 15.1 cents on Monday to 16.7 cents per lb. on Thursday.

Sales for the week totaled 1,023,300 head, down 156,000 head from the preceding week.

## Delmarva

October 29, 1965

Delmarva broilers and fryers live prices continued to advance slightly with good demand for light auction offerings. Live supply barely adequate for needs, weights running lighter than desired in instances.

Ready-to-cook demand very good with most plants booked to capacity. Prices trending higher in response to increased demand.

Estimated slaughter for Friday and Saturday, 903,000 head, compared to 798,000 head last weekend.

In the 24 hours preceding market close on Friday, broilers and fryers at farm prices ranged from 16.0-16.7 cents per lb. on sales of 939,000 head.

### CARE IN PRESSING

Keep zippers closed when pressing garments reminds Bernice Tharp, Penn State extension clothing specialist. Cover a zipper with a press cloth. If the fastener is metal, the soleplate of the iron is protected. If the fastener is nylon coil, the cloth protects it from damage because of high heat.

# Weekly New York Egg Mkt.

From Monday, October 25th to Friday, October 29th

	Mon.	Tues.	Wed.	Thurs.	Fri.
<b>WHITE</b>					
Ex. Fcy Hywts.	40½	40	40	40	40
Fcy. Hywts.	39½	39	39	39	39
Fcy. Med.	37	37	37	37	37
No 1 Med.	36	36	35	35	35
Pullets	30½	30½	30½	30½	30½
Peeweese	24	24	24	24	24
<b>BROWN</b>					
Ex Fcy Hywts.	46	46	46	45	45
Fcy. Hywts.	44	44	44	43	43
Fcy. Med	37	37	36	36	35
Pullets	30½	30½	30½	30½	30½
Peeweese	24	24	24	24	24
<b>MIXED</b>					
Fcy Hywts.	39½	39	39	39	39
Standards	35	35	35	35	34-35
Checks	28	28	29	28½	28½

TREND. Extra Large and Jumbo still in some surplus, but market tone generally a bit steadier.

Copyright 1965 by Urner Barry Publications

**Lancaster** 24.00-24.25.  
 (Continued from Page 2) SOWS: US 1-3 300-400 lbs. 20.50-21.50, US 2-3 400-550 lbs. 19.50-20.50, 550-650 lbs. 19.00-19.50.  
 steady to \$1.00 lower. Choice 35.00-38.00, Few High Choice \$19.00-19.50.  
 and Prime 37.50-38.50, Good SHEEP 500: Woolled slaughter lambs steady. Ewes steady, 32.00-35.00, Standard \$27.00-32.00, Utility 21.00-26.00, Woolled slaughter lambs: Cull mainly 18.00-22.00. Choice 70-100 lbs. \$23.00-24.00, Few small lots \$24.50-25.00, Good 65-90 lbs. 20.50-23.00, Utility 17.00-20.00, on Wednesday to close the week 50, spots 75 Lower. Cull to Choice Slaughter Ewes \$6.00-10.00.  
 Sows mostly 50c Lower.  
 BARROWS AND GILTS: US S 1-2 190-240 lbs. 25.25-26.00, US 1-3 190-240 lbs 24.25-25.25, US 2-3 240-270 lbs. 24.25-25.25.  
**Something To Sell? Try A Classified Ad In Lancaster Farming**

Helping the World Grow Better



## Advantages of Fall Plowing Down of ORTHO FERTILIZERS

1. Gives opportunity for part of spring work to be done when time is less critical.
2. Allows winter freezing and thawing to mellow heavy soils and provide better seed bed.
3. Causes fields to dry and warm up earlier — permits earlier planting.
4. Avoids soil compaction from working fields when too wet.
5. Escapes planting delays caused by wet springs.
6. Reduces run off and increases stored moisture.
7. Increases yields of many crops.

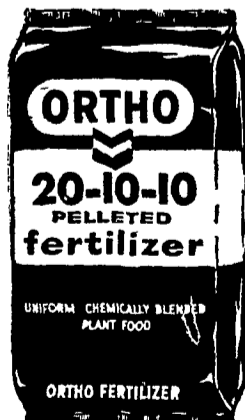
### ORTHO UNIPEL FERTILIZER



Available in  
BAGS — BULK  
Bulk Spreader Service

Fertilize Now and Receive  
FREE Valuable Coupons  
Redeemable on Quality  
Merchandise

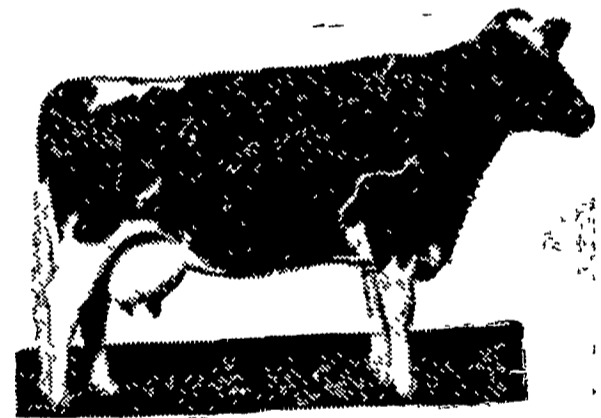
EXTENDED CASH TERMS



Call on us — We'll be happy to plan your Fall Fertilization for you.

**P. L. ROHRER & SONS, Inc.**  
Smoketown, Pa. Ph. 397-3539

## Your Best Dairy Feed Buy



# WIRTHMORE

## Hi-Cal Pellets

- Formulated & fortified for high production
- Molasses coated — highly palatable
- High in energy — 76 therms



HEISEY FARM SERVICE  
Lawn and Bellaire  
665-3121 — 367-2321

PARADISE SUPPLY  
Paradise  
687-6292