

How You Heat?

(Continued from Page 13)

heated to boiling before steam is available. The second type is the flash type, in which steam is produced quickly as water drips from the reservoir in the iron onto the hot interior surface. The steam-spray iron sprays a mist of moisture ahead of the iron when you push a control, in addition to the steam from the soleplate.

A steam iron should have all of the features specified for a dry iron plus a reservoir that holds at least one cup of water for a reasonable period of steam pressing and a water opening that is easily filled and is safe to empty when hot.

One iron that you can use

either dry or with steam. If they are allowed to remain, more convenient than two—the harder they are to re-separate irons—one for dry move, and one for steam use.

Give Curtains and Draperies Frequent Checking—

Certain household oils can give your curtains and draperies a rancid odor and perhaps a yellowing condition. The National Institute of Dry-cleaning reports these oils come from such places as kitchen ranges and cooking appliances, automobiles, and furnaces. Wherever these oils settle they oxidize forming acids which in turn cause the rancid odor. Other oils oxidize and cause the yellowing effect.

This condition is similar to the oils which may collect on pillowcases. The longer

A Word of Caution—Never allow pesticides to get on food, dishes, pots, or pans. Take everything off the shelves before you spray cabinets. Wait until the spray dries before you put things back.

Pennsylvania's Civil Service System, just entering its 25th year, was established by the Legislature in 1941. The Civil Service Act consolidated three independently operated merit systems and made the State Civil Service Commission responsible for the administration of merit system personnel services.

For The Farm Wife

(Continued from Page 13)

7 x 1½ inch baking dish rubbed with butter. Make 3 depressions in rice and sprinkle 1 teaspoon salt over rice. Place eggs in depressions. Pour sauce over all. Bake at 350 degrees for 15 minutes. 4 servings.

PUBLIC SALE OF VALUABLE REAL ESTATE

On Tuesday, November 2, 1965 at 2 P.M. sharp at R. D. #9, York, Pa. in Lower Windsor Twp. on road between Yorkanna & Valley View Park. The undersigned executors of the Emma J. Himes estate will offer at public sale the following real estate—

Farm consisting of 48 acres and 111 perches most of which is good rich farming land and approx. 10 acres in woodland. Improvements consist of 2½ story 7-room frame house with asbestos siding, full basement, heated by oil hot water heat, also summer house & pump house, nice yard with good shade trees, also frame bank barn 36 x 56 with 12 x 56 extension, tobacco shed 24 x 66, frame corn crib, block hog pen, chicken houses. Anyone in the market for a farm be sure and see this one. An ideal farm and only a few minutes drive from York. For inspection of farm phone the executors for appointment. Terms will be given on the day of sale.

EDWARD C. HIMES

Phone 845-1727

THEODORE R. HIMES

Phone 755-3428

Executors

Jacob A. Gilbert, Auct.

Paul E. Stein, Atty.

Since 1935 —
Your Dependable

SALES EVERY TUESDAY

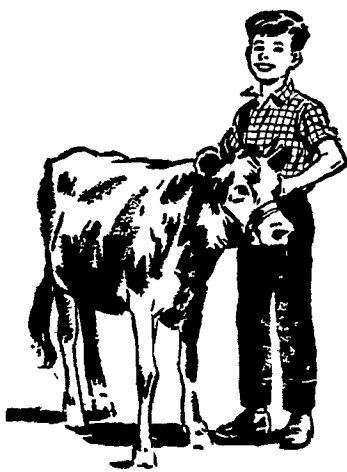
Large consignments of native calves and yearlings as well as heavy cattle each week. We start selling cattle at 3 P.M. every Tuesday.

STAUNTON
LIVESTOCK
MARKET, INC.

C & O Flats

Staunton, Va.

"A national Certified Market"



Improved higher energy PIONEER VIG-R-CALF

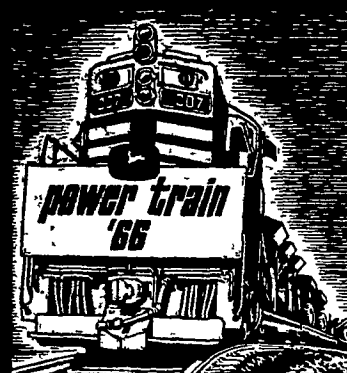


Since 1902

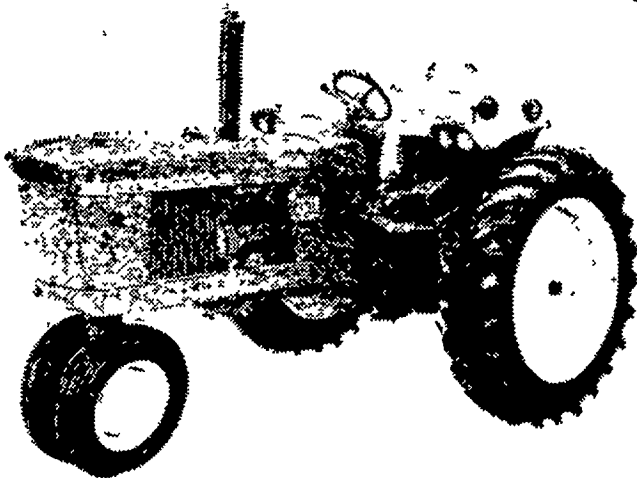
Look For The
New White Bag!

GOOD'S FEED MILL

New Providence



WHAT'S NEW
IN THE
LONG GREEN LINE



COMING SOON



This new 53 h.p. "2510" packs all the features of the field-proved John Deere "3020-4020" Tractors. Packs 'em in a new and practical power size in The Long Green Line. You can get a "2510" equipped with exclusive six-way hydraulic control of tractor operations... same as the farmer-acclaimed "3020's" and "4020's." You have your choice of a new 4-cylinder, variable-speed gas or direct-ejection Diesel engine. Power Steering, Power Brakes, and deluxe posture seat are standard equipment. The new "2510" will arrive soon. Reserve your test-drive now.



A. B. C. Groff, Inc.
New Holland 354-8001

Alan Beyer
Christiana LY 3-5687

Sholtzberger's
Elm 665-2141

M. S. Yearsley & Sons
West Chester 696-2900

Londis Bros. Inc.
Lancaster 393-3906

H. S. Newcomer & Son
Mt. Joy 653-3361

Wenger Implement Co.
Buck BU 4-4467

ELM GROVE GUERNSEY DISPERSAL

Mrs. H. D. Paxson, owner
at the farm, U. S. route 202, Holicong, Bucks County, Pa.
(just 6 miles east of Doylestown)

SATURDAY, NOVEMBER 13
1:00 p.m. (EDT)

57 HEAD

1 BULL - 26 COWS - 10 BRED and 20 OPEN HEIFERS
1964 Herd Average — 11039 — 579

This is a real top, small herd with exceptionally good production and good type. It represents a tremendous opportunity to add top quality cattle to your herd. For catalogs write: Sale Managed by:

BUZZ GAREY
100 Walnut Lane, Morrisville, Pa.

CY5-2941 (215)

Special Cattle Sale

This is our fall round-up

1200 HEAD

Yearlings, 2 year olds, calves and

All kinds of Stock Cattle

NOV. 5, 1965

7:30 P.M.

South Branch Stockyards, Inc.

Moorefield, West Virginia