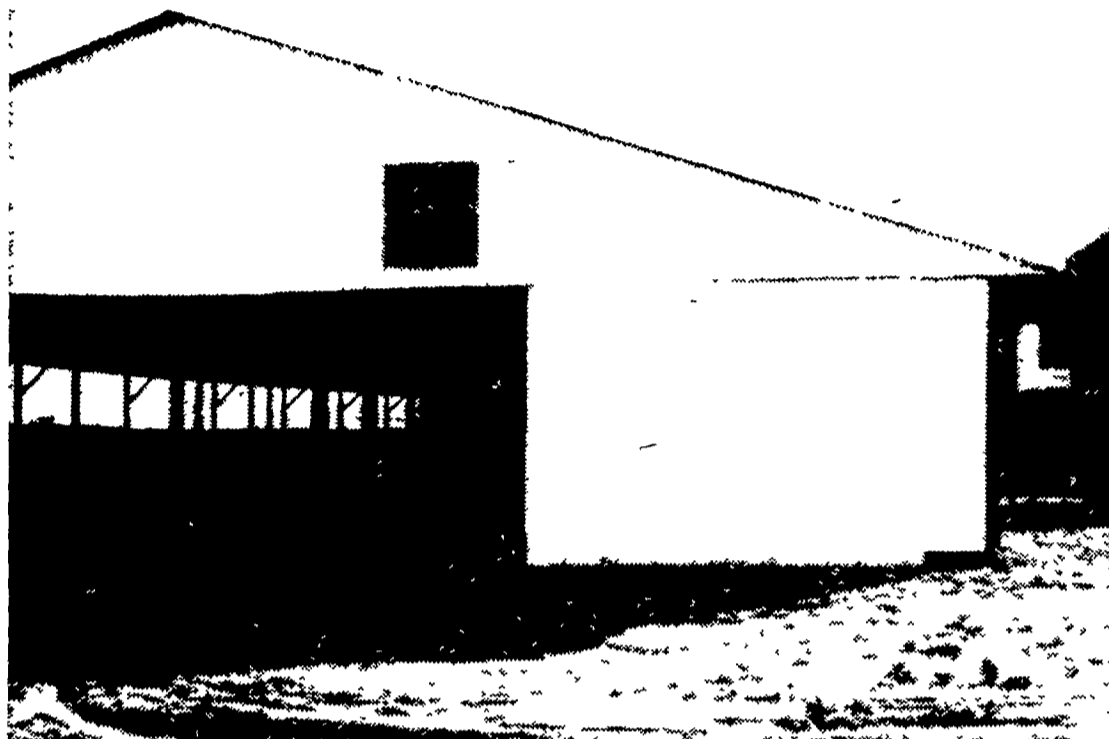


Lancaster Farming

VOL. 10 NO. 44

Lancaster Farming, Saturday, October 2, 1965

\$2 Per Year



THIS NEW 60 x 134-FOOT BUILDING on the farm of Clarence Keener, Jr. has a capacity of about 200 head of steers. The above view is of the west end. Sliding doors at either end, plus plywood panels on the north side, enable this building to be closed completely on three sides. The twin, concrete silos in the background have a combined silage capacity of about 1500 tons L. F. Photo

Steer Feeding Program Of Clarence Keener, Jr. Is Based On Silage and Urea

In recent years, steer feeders have come to accept and use the principle of heavy silage feeding; they have also come to accept a protein supplement relatively high in urea content. Both of these feed sources were accepted for economy reasons.

A further economy measure, and one which is probably more controversial than either of the others, is being tried by at least one county steer feeder this year. Clarence Keener, Jr., of Manheim R1 is one of the new breed of young farmers in Lancaster County who believes not only in using everything he knows, and can

learn, but also in being willing to try something new. He is blending his protein supplement, in the form of urea, directly into the silage as the latter goes into the silo.

Keener is well aware of the dangers inherent in this method and is applying all possible caution to be certain the urea is properly distributed. To each ton of silage he adds 10 pounds of urea and 10 pounds of limestone, using a metering device. He is trying this feeding approach for two reasons.

1—Economy — by buying his protein in this undiluted (Continued on Page 16)

Miss Weaver Has Grand Champion At New Holland Fair Steer Show

Miss Sheryl Weaver celebrated her thirteenth birthday Thursday by showing her Angus steer, "Toby," to the grand championship at the New Holland Farmers Fair. This was a double victory for Miss Weaver in the sense that she had finished in last place

in her initial show ring effort last year. Judge Harold Stewart, farm agent from Dauphin County, described the champion steer as "having more thickness over the top and more quarter than any steer in the show." (Continued on Page 8)

Egg Quality & Disease Clinics To Be Show Features At NEPPCO

Poultry producers from 14 northeastern states will have a chance to take their egg quality and disease problems to special clinics when they gather at Harrisburg for the annual exposition and convention of the Northeastern Poultry Producers Council (NEPPCO) on October 12-13-14.

A poultry health clinic and an egg quality clinic will be among the many services, old (Continued on Page 8)

Poultry Litter Not For Dairy Feed, Guss Says

Dr. S. B. Guss, extension veterinarian of Penn State University, advises dairymen in a special extension letter to avoid feeding poultry litter to their milking herds as a source of protein.

Although many beef cattle throughout the U.S. are being fed in this way, Guss said, little is known about most aspects of the practice. He listed some of the following hazards:

- 1—Pesticide residues from poultry houses may be deposited in the cow's body or secreted into her milk.
- 2—Tuberculosis — the avian variety is known to be able to sensitize cattle and swine (Continued on Page 8)

Groff And Lapp Top DHIA List For August

The Red Rose Dairy Herd Improvement Association newsletter for August showed a registered Holstein in the herd of John C. Groff, at Quarryville R1, had completed the highest individual 305-day lactation during the month. "Leader" produced 21,038 lbs milk and 878 of butterfat with a 4.2% test. The (Continued on Page 16)

Farm Calendar

October 4 — 10 a.m. Public hearing on Delaware Valley Milk Order begins at Sylvania Hotel, Philadelphia
— 8 p.m. Lancaster County 4-H Leaders Council at the Clarence Stauffer farm, Ephrata R1.
October 6 — Manheim Fair, Oct. 6-8.
— 6:30 p.m. Baby Beef Show 4-H and FFA.—at Manheim Fair.
(Continued on Page 8)

County Farmers Assn. Sets October 19 For Annual Meeting Date

The Lancaster County Farmers Association has announced (Continued on Page 15)

Penna. Holstein Sets New Record For 3-Yr.-Olds

The 12-month production record for senior three-year-old registered Holsteins on official test has been raised 40 pounds by a Pennsylvania cow. The new class leader is Mowry (Skyline) Esther, owned by Mowry Farms of Roaring Spring, Blair County. She breaks a previously established record that has lasted for four years.

Starting her lactation at three years, six months of age, "Esther" milked twice daily for 365 days to produce 30,867 lbs of milk and 1,136 lbs of butterfat. Her average test was 3.7% of butterfat. "Esther's" level of milk pro- (Continued on Page 6)



THIRTEEN-YEAR-OLD SHERYL WEAVER, New Holland R1, shown with the Angus which won the championship title for her at the New Holland Fair. On the left is Larry High with his reserve champion. L. F. Photo