

● Diversion Payments (Continued from Page 1) agreed diversion of 1,262 acres. Nationally 1.5 million farms were signed up in the 1965 feed grain program for an agreed division of 34.6 million acres; 891,000 farms were signed up in the wheat program for a diversion of 7.5 million acres. As a result of the programs, carryover is estimated at 55.2 million tons — 35 percent below the 84.7 million tons carried over on Oct 1, 1961; the wheat carryover as of July 1, 1965, is estimated at 819 million bushels — 42 percent below the July 1, 1961, carryover of 1,411 million bushels.

In the signup held last spring, 395 county farms were enrolled in the 1965 feed grain program for an agreed diversion into approved conserving uses of 5,335 acres of corn, barley, and grain sorghum; 588 farms were signed up in the 1965 wheat program for an



MELVIN BRENEMAN, STRASBURG R1, shown with his four-year-old Guernsey cow, Quarrieside Rival Pauline, which took the senior and grand championships and the best udder title in the Guernsey division of the Lampeter Dairy Show. L. F. Photo

Need . . .

HAY — STRAW — EAR CORN

Buy Now and Save!

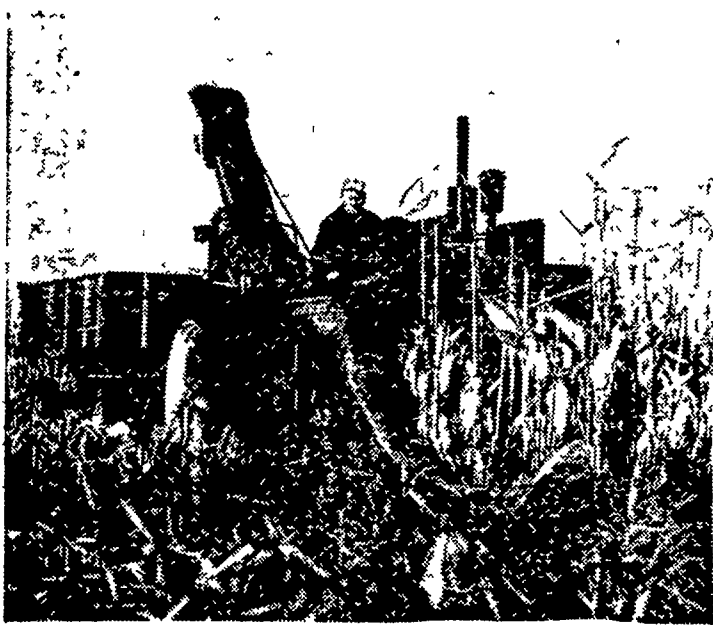
More and more farmers are buying from us for better value and all around satisfaction.

Delivered — any quantity

Phone Area Code 717 687-7631

Esbenshade Turkey Farm

Since 1890
PARADISE, PA.



New John Deere 237 Corn Picker raises the speed limit in high-yield corn

Shift up! Pick at speeds up to 5 mph, even when yields run well over 100 bushels. Long, tapered gatherers and high inside shield, funnel stalks right in. Even tangled stalks seldom escape three roller-type gathering chains. There's new gathering and snapping speed. And the 237's spiral snapping rolls cut shelling loss in half.

Faster elevators with higher flights move corn up fast. Trash goes too, aided by new rotating trash paddles. New husking rolls — cast-iron spirals against serrated rubber — peel husks, pull trash through. You pick clean. See the new 237 soon. Ask about the Credit Plan.



Alan Beyer

Christiana LY 3-5687

A. B. C. Groff, Inc.
New Holland 354-8001

Landis Bros. Inc.
Lancaster 393-3906

Shotzberger's
Elm 665-2141

H. S. Newcomer & Son
Mt. Joy 653-3361

M. S. Yearsley & Sons **Wenger Implement Co.**
West Chester 696-2990 Buck BU 4-4467

● Lampeter Fair

(Continued from Page 9) Sands, Holstein producer from Luzerne County, over numerous entries in the Holstein division

Reserve title went to a Holstein shown by Melvin Peifer of 1438 Hans Herr Drive, Lancaster, on his two-year-old Holstein cow Peifer also had the reserve senior champion. The junior champion was a senior yearling shown by J Mowery Frey, 401 Beaver Valley Pike, Lancaster.

Grand champion in the Guernsey breed went to a 4 y. four-year-old cow shown by Melvin Breneman, Strasburg R1. That cow "Quarrieside Rival Pauline" was bought about four months ago by Breneman as part of a herd. She also took the senior championship and best udder for the Guernsey division. Donald Breneman, Strasburg R1, showed his intermediate calf to the junior championship.

Reserve went to the aged cow shown by Arthur Breneman of Willow Street R1.

In the Jersey breed show, J Marvin Heir of Holtwood R1 swept all honors with his four-year-old former state champion cow. She won senior and grand championship honors, then came back in the showmanship trials for another victory. Heir also had the junior and reserve championships in the Jersey divisions.

Runnerup in the showmanship event was Leroy Welk of Strasburg R1. Winner of the fitting contest was Edwin Hess, also of Strasburg R1.

Show results

HOLSTEIN

Bull calf under 1 year (grand champion)—1, Beaver Valley Bull Stud, 2, Robert Hess

Junior calf—1, Donald Ban, 2, J Mowery Frey, 3, John Harnish, 4, Richard Hess, 5, Donna Welk

Intermediate calf—1, Richard Hess, 2, Melvin Peifer, 3, J Mowery Frey, 4, Stanley Graver, 5, Lloyd Welk

Senior calf—1, J Mowery Frey; 2, Melvin Peifer

Junior yearling—1, Edwin Hess, 2, J Mowery Frey, 3, Melvin Peifer, 4, Jeffrey Peifer, 5, James High

Senior yearling—1, J Mowery Frey, 2, Melvin Peifer; 3, Cindy Hess, 4, John Harnish; 5, James Leanman, 6, Clair Esbenshade.

Cows, 2-year-old—1, Melvin Peifer (reserve champion), 2,

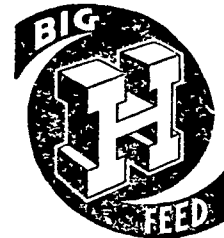
J Mowery Frey; 3, Richard Hess; 4, John Harnish, 5, Robert Hess, Kenneth Leahman.

3-4 year-old—1, J Mowery Frey, 2, Robert Hess, 3, Elvin Hess, Jr; 4, Robert Hess, 5, Edwin Hess, 6, J Mowery Frey

Aged cows—1, Robert Hess (champion), 2, Melvin Peifer, 3, Ira Welk, 4, Elvin Hess, (Continued on Page 14)



BOOK!



DAIRY FEEDS NOW!

We fully understand the importance of this major book-ing decision on your part. We would appreciate the opportunity of talking with you soon.

Leola Feed & Grain

Grinding and Mixing

Phone (717) 656-3811 Res. 392-5993
137 Newport Rd., Leola, Pa.

FEED

MILK POPPER NOW

- MORE MILK
- IMPROVED HERD HEALTH

... ALL AT A GREATER PROFIT

Dairymen logically PROVED MILK POPPER (SUPPLEMENT, 32%) BRINGS OUT FULL PRODUCTION CAPACITY OF THEIR COWS SAFELY

a blend of proteins, special levels of vitamins, minerals plus 20,000 U.S.P. Units Vitamin A (as palmitate)

... PRODUCTS OF HONEGGER RESEARCH