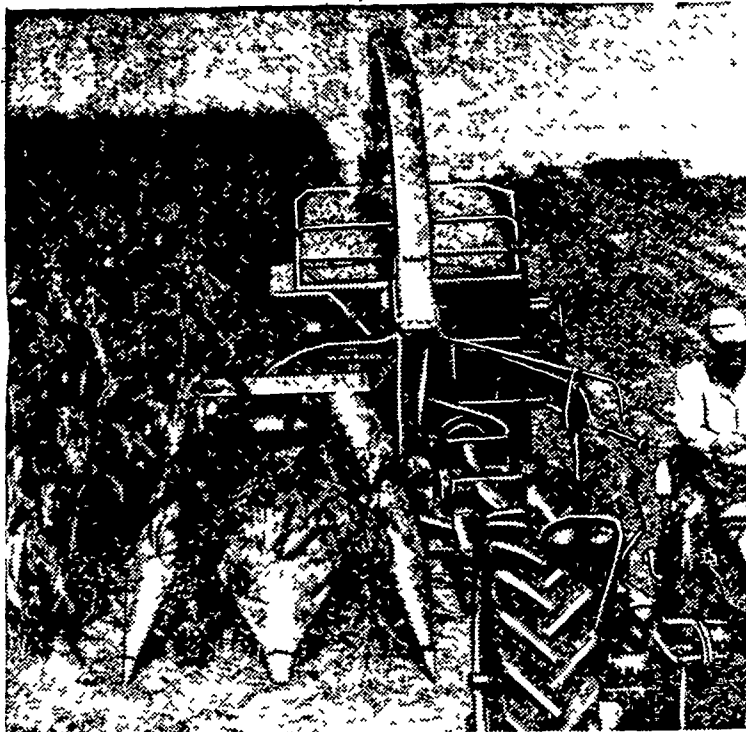




CLIFFORD E. BOLLINGER, 17, of Lititz R4, has good reason to smile for the senior calf, Garwood Londa, which he holds so proudly, has just been awarded the Junior Champion's rosette in judging of FFA Holsteins at the State Junior Dairy Show in Harrisburg. Next month Clifford will represent the Pennsylvania FFA in judging dairy cattle in 50-state competition at the American Dairy Congress at Waterloo, Iowa.



## Go 2-row

John Deere  
12 Forage Harvester

Fewer trips through the field . . . half the number of turns . . . and less field packing—that's what a 2-row unit for the heavy-duty John Deere 12 Forage Harvester will do for you.

The PTO- or engine-driven 12 is also available with a heavy-duty 1-row unit, 6- or 7-foot mower bar, and a windrow pickup. Stop in soon—get all the facts on the 12 Forage Harvester.



**A. B. C. Groff, Inc.**  
New Holland 354-8001

**Alan Beyer**  
Christiana LY 3-5687

**Landis Bros. Inc.**  
Lancaster 393-3906

**Shotzberger's**  
Elm 665-2141

**H. S. Newcomer & Son**  
Mt. Joy 653-3361

**M. S. Yearsley & Sons Wenger Implement Co.**  
West Chester 696-2990 Buck BU 4-4467

### Chicago

(Continued from Page 2)  
50 lower except Standard steady to 50 higher; heifer beef steady to 1.00 lower, most decline on Choice. Cow beef steady to 50 lower, loss on Commercial.

**SLAUGHTER STEERS** — Ten loads Prime 1225-1430 lbs. 29.50, load Prime 1575 lbs. 28.75, numerous loads High Choice and Prime 1150-1400 lbs. 28.50-29.25, latter price largely Prime. Several loads High Choice and Prime 1400-1450 lbs. 28.75, Choice 1100-1350 lbs. 26.50-28.50, Choice 1000-1100 lbs. 25.50-27.25, closing 26.00 up, several loads High Choice and Prime 1050-1150 lbs. 27.00-28.25, Choice 900-1000 lbs. 25.25-26.50, Mixed Good and Choice 900-1300 lbs. 25.00-26.25, Good 24.00-25.25, Standard and Low Good 22.00-24.00.

**SLAUGHTER HEIFERS** — Seven loads High Choice and Prime 900-1075 lbs. 25.75-26.00, load High Choice, mostly

Prime, 1025 lbs. 26.25 on Monday, Choice 775-1050 lbs. 23.50-25.65, latter price including a few Prime. Mixed Good and Choice 750-1000 lbs. 23.00-23.50, Good 21.00-23.00, Standard and Low Good 19.00-21.00.

**COWS** — Utility and Commercial 14.25-16.00, Canner and Cutter 11.50-14.75, Shelly Canner 10.00-11.50.

**BULLS** — Utility and Commercial 17.50-20.00, few outstanding individuals 20.50.

**FEEDERS** — Load and lot Choice 800-840 lb. steers 23.50-24.00.

**PATZ**  
Sales & Service  
Barn Cleaners - Silo  
Unloaders - Cattle Feed  
**Robert K. Rohrer**  
Quarryville, R. D. 1  
Hensel KI 8-2559

## 2700 SOUTHWEST VIRGINIA YEARLING STEERS

Wed., Sept. 22, 7:00 P.M. Dublin, Va. 900 Yearlings  
Thurs., Sept. 23, 7:00 P.M. Wytheville, Va. 1000 Yearlings  
Fri., Sept. 24 7:00 P.M. Galax, Va. 800 Yearlings

CATTLE GRADED BY VIRGINIA DIVISIONS OF MARKETS

SOLD IN UNIFORM LOTS

WILL MEET INTERSTATE SHIPPING REQUIREMENT

VIRGINIA BEEF CATTLE ASSOCIATION SALES

EASTERN STANDARD TIME FOR ALL SALES

For Further Information Contact:

N. N. RICH, Co. Agent, PULASKI, VA. 243

TELEPHONE — PULASKI 2-5631

## ATTENTION CATTLE FEEDERS!

7800 Head

in  
FIVE FEEDER CALF SALES  
LOCATED IN CENTRAL VIRGINIA

"Where Quality is Outstanding"

Angus — Hereford Steers — Heifers  
300 - 700 Pounds

ORANGE	September 21	1200 Head
CHARLOTTESVILLE	September 22	1800 Head
CULPEPER	September 23	1400 Head
MARSHALL	September 23	2000 Head
STAUNTON	September 24	1400 Head

All sales start at 1:00 P.M. (EST) except Marshall at 7 P.M.

Health requirements and all qualifications conform to high standards of the Virginia Feeder Cattle Association

For further information contact:

R. S. CHILTON, JR., Jeffersonson, Va. Ph: Culpeper 9373

Since 1935 —  
Your Dependable

## SALES EVERY TUESDAY

Large consignments of native calves and yearlings as well as heavy cattle each week. We start selling cattle at 3 P.M. every Tuesday.

1965 SPECIAL SALES  
STAUNTON FEEDER  
CALF SALES

1st, SEPT. 24 - 1 P.M.

2nd, OCT. 29th - 1 P.M.

1500 CALVES FOR  
EACH SALE.

**STAUNTON  
LIVESTOCK  
MARKET, INC.**

C & O Flats  
Staunton, Va.

"A national Certified  
Market"

## SALES

## EVERY THURSDAY

1965 SPECIAL SALES  
SEPT. - OCT.

THURSDAY, SEPT. 16  
STOCKER FEEDER SALE  
7 P.M.

THURSDAY, SEPT. 30  
7 P.M.  
Second STOCKER  
FEEDER SALE

TUESDAY, OCT. 5  
1 P.M.  
Rockingham  
Yearling Sale  
1,000 Native Cattle

WED., OCT. 13 - 3 P.M.  
Valley Pig Sale

THURSDAY, OCT. 14  
STOCKER FEEDER SALE  
7 P.M.

THURSDAY, OCT. 21  
Annual ROUNDUP  
STOCKER FEEDER SALE

We invite you to attend these sales.  
**Rockingham  
Livestock Sales, Inc.**  
Harrisonburg, Va.

**CHARLES H. MARTIN ESTATE COMPLETE DISPERSAL  
MONDAY, SEPTEMBER 20  
LIONVILLE, PENNA.**

At the farm one mile out of village of Lionville, Pa. on Mill Rd. Just south of Turnpike exit for Downingtown, Pa. 4 miles north of Downingtown, Pa. and 25 miles east of Lancaster. Watch for signs in Lionville.

125 REGISTERED HOLSTEINS

(75 Milking Age — 10 Bred Heifers — 30 Yearlings — Bull — Balance Heifer Calves)

Bang's Certified, T.B. Accred., Calf Vacc.; Blood & tested within 30 days. Exam for Preg. & Mastitis.

TOP PRODUCTION SELLING!!

1964 DHIA Avg. 14,160 M. 4.1% 576 FAT!!

1 sells with 853 fat. 3 sell with over 700-lbs. fat. 10 others sell with over 600-lbs. fat. 10 others sell with over 500-lbs. Others on test now.

TYPE SELLING!! 1 "Excellent" — 3 "VG" — 16 "GP"

22 "G". DAUGHTERS OF THESE FAMOUS SIRES SELLING

16 by Maplebend Dean King Posch — 14 by Cochran Gene

— 5 by "Ivanhoe" — 7 by Milk & Honey Ivanhoe — 6 by

Sir Ty Vic Fobes — 4 by Lakefield Fond Hope. STARS TO

SOLD!! Martin Acres Triumph Gem, 1st 2 yr. old (4-H)

Penna. Farm Show and 5th in Open show. 1st & Gr. Ch.

Chester 4-H Roundup, 1965 and 6th in Open at SE Dist.

Show, 1965. Owned by Nancy Martin. HERD SIRE SELLING

Fond Hope Glamour Boy, a 2 yr. old son of Lakefield Fond

Hope out of an "EX" dam with 3 rears. over 700-lbs. fat.

17,000 M, 4%. Several are bred to him and 2 mat. sisters.

MILKING EQUIPMENT SELLS — Brand New Sputnik

4 Surge DeLaval Units — 500 gal. Jamesway bulk tank.

MAKE YOUR PLANS NOW TO ATTEND THIS COMPLETE DISPERSAL!!

NOTE: This is a "rush" sale. Mr. Martin's tragic accident

death leaves no alternative. It is a good herd of cattle re-

coming into it's own right. Sale starts 11:00 A.M. Lunch Avail. Catalogs Under C

R. AUSTIN BACKUS INC. CHARLES H. MARTIN ESTATE

Sale Mgrs. & Auctioneers Owner

Mexico, N. Y. Lionville, Penna.