

● **New Holland**

(Continued from Page 2)

24 60. Good 500 000 lbs 21.50-23.75. Standard 600 950 lbs 18.50 21.50. Few Utility 17.00-18.00

CALVES 508 Vealers moderately active. \$100 3 00 higher Choice Vealers \$34 00-38 50. Good 30 50 35 00. Standard 27 00 32 00. Utility 23 00-27 50. Cull 19 50-23 50. with Cull 60-85 lbs 16 00 20 00

SHEEP 12 Not enough on sale for a market test Few Choice 75 95 lb. Spring Lambs 26 00 27 50

COWS

September 15, 1965

Receipts totaling 170 cows, 13 bulls and 11 heifers sold at a slow to barely steady rate. Fresh Holsteins, 275-780, Guernseys 150 250; other breeds, 150 250. Bulls, 110-185; heifers, 65 170

HORSES

September 13, 1965

An active and fully steady trend prevailed with 270 head sold Riding horses, 100-500, driving horses, 125-250; killers, 5 5 1/2 cents per lb. Pony mares, 30 100; geldings, 25-160. No mules were offered

HOGS

September 13, 1965

Hog prices trended 50 cents higher with 487 head sold Market hogs retailed for 24-25; wholesale (U.S. 1-3), 23.75-24.25 heavyweights, 23-23 50 Shoats brought 14-16.50.

CALVES

September 13, 1965

Calf receipts totaling 132 head sold steady with Choice and Prime bringing 32 35.50, Good and Low Choice, 30-32, Standard, 22 30. Common, 17-25

● **Vintage**

(Continued from Page 2)

1800 lbs 22 10-22 75, Three head Good 22 25-23 00

FEEDER STEERS Good 600 930 lbs 23 50-24 35

CALVES 652 Standard to Choice Vealers \$100-2 00 higher Cull and Utility steady to \$1 00 higher Supply included around 25 percent returned for further feeding, at prices \$1 00-2 00 higher than corresponding prices paid for vealers Choice Vealers 33 00-35 50, Good 29 50-33 50, Standard 27 00-30 00 Utility 23 50-27 40 Cull 18 50-22 50, with 60-85 lbs 16 00-18 50

HOGS 111 Barrows and gilts mostly 50c higher Sows \$1 00 lower Five head US 1-2 200 220 lbs Barrows and gilts 24 60 25 00 US 13 200-240 lbs 23 85-24 25 US 23 180-265 lbs 23 00-23 50 US 2-3 300-525 lbs Sows 20 35-20 75

SHEEP 57 Spring lambs fully steady Ewes steady Spring lambs Choice 65-90 lbs 25 50-27 00 Good 23 00-25 00 Utility to Choice Slaughter Ewes 7 50-11 00

HOGS

September 11, 1965

Receipts totaled 148 head at Saturday's sale Lightweights brought 22 50-22 60, 180 200 lbs 22 75-24 200-220 lbs 23 75-24 25, 220-240 lbs, 23 75-24 10, 240 lbs, and up, 22 25 23 35 Sows sold for 19 85-20

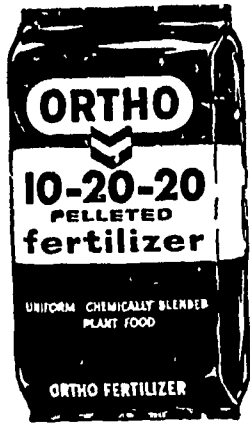
● **ASC Elections**

(Continued from Page 1)

term and Elmer L. Huber Pequea R1 to a term of one-year Alternates were Frank W. Aumert Holtwood R1, first B. Snively Garber, Willow Street R1, second

The newly-elected county and community committeemen will take office October 1, 1965

Fertilize Your Wheat With Ortho Unipel Fertilizer



- UNIFORM COATED PELLETS — for even drilling
- CLEAN AND EASY TO HANDLE will not clog up drills
- CONTAINS FAST ACTING AND LONG LASTING NITROGEN AND PHOSPHORUS
- HIGH ANALYSIS — less handling and fewer stops while planting

AVAILABLE IN BULK OR BAGS
CALL TODAY AND PLACE YOUR ORDER

P. L. ROHRER & BRO., INC.

SMOKETOWN

Ph. Lanc. 397-3539

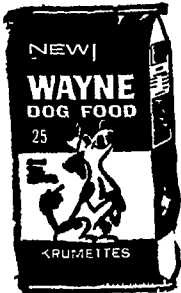
MEMO

from your Wayne Dealer

Book Your Cattle Feed Now

We're not going to give you a long list of reasons why now is the time to book. You know them all. Just a word to the wise to help you do it and get it off your mind.

Anyway, we'd like to see you and maybe bring you up to the minute on feeding developments.



POWL'S FEED SERVICE

R. D. 1, Quarryville
R. D. 2, Peach Bottom

C. E. SAUDER & SONS

R. D. 1, East Earl

MOUNTVILLE FEED SERVICE

R. D. 2, Columbia

HERSHEY BROS.

Reinholds

WHITE OAK MILL

R. D. 4, Manheim

GRUBB SUPPLY CO.

Elizabethtown

HEISEY FARM SERVICE

Lawn and Bellaire

DUTCHMAN FEED MILLS, INC.

R. D. 1, Stevens

MILLERSVILLE SUPPLY CO.

Millersville

ROHRER'S MILL

R. D. 1, Ronks

H. M. STAUFFER & SONS, INC.

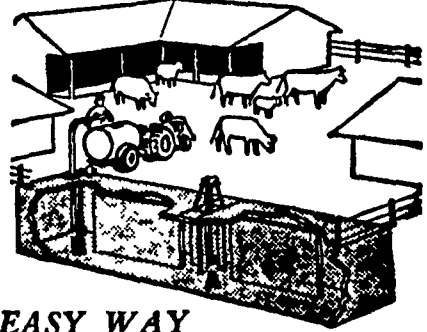
Witmer

MILLPORT ROLLER MILLS

R. D. 4, Lititz

DAIRYMEN-CATTLEMEN

Here's the answer to your MANURE PROBLEMS



EASY WAY MANURE DISPOSAL SYSTEM

Saves Time—Saves Fertility

Just scrape or wash manure, bedding waste and feed into Easy-Way holding tank. When you're ready, the powerful agitator and self-priming slapper impeller pump will put the homogenized mixture into Easy Way liquid field spreader. No clog—no mess—no stink.

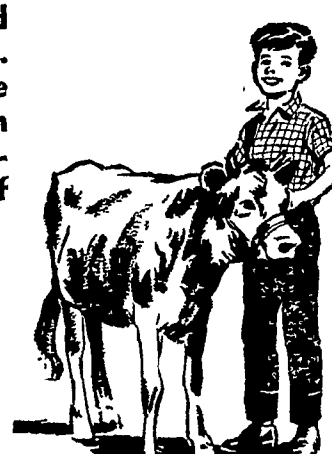
For complete information on the EASY WAY DISPOSAL SYSTEM write to:

CALEB M. WENGER

R. D. 1, Drumore Center K15-2116, QUARRYVILLE, PA.

WIN A Purebred CALF!

Good's Feed Mill and Hales & Hunter Co. will give away one purebred Holstein Calf and one purebred Guernsey Calf at the



LAMPETER FAIR

Sept. 22 - 23 - 24

Just Ask At Our Booth For

Your Free Registration Ticket

Boys and Girls age 10 to 18 inclusive are eligible to win.

Drawing 9 P.M. — Friday, September 24

You Need Not Be Present To Win



GOOD'S FEED MILL

New Providence