

● "Spuds"

(Continued from Page 1) degrees, but for table stock temperatures down to 33-34 degrees are tolerated. Seed and equipment are

two of the biggest costs involved in potato production, according to Wissler. He generally buys all certified seed from Maine, but this year with seed at an all-time high (Continued on Page 11)

Fertilize Your Wheat With Ortho Unipel Fertilizer



- UNIFORM COATED PELLETS — for even drilling
- CLEAN AND EASY TO HANDLE will not clog up drills
- CONTAINS FAST ACTING AND LONG LASTING NITROGEN AND PHOSPHORUS
- HIGH ANALYSIS — less handling and fewer stops while planting

AVAILABLE IN BULK OR BAGS
CALL TODAY AND PLACE YOUR ORDER

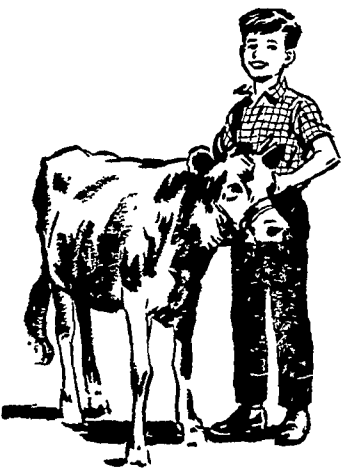
P. L. ROHRER & BRO., INC.

SMOKETOWN

Ph. Lanc. 397-3539

WIN A Purebred CALF!

Good's Feed Mill and Hales & Hunter Co. will give away one purebred Holstein Calf and one purebred Guernsey Calf at the



LAMPETER FAIR

Sept. 22 - 23 - 24

Just Ask At Our Booth For
Your Free Registration Ticket

Boys and Girls age 10 to 18 inclusive are eligible to win.

Drawing 9 P.M. — Friday, September 24

You Need Not Be Present To Win



GOOD'S FEED MILL

New Providence



THIS IS A POTATO STORAGE BUILDING on the Reid Wissler farm. The 36 by 116-ft. structure was erected in 1962. It is large enough to store the entire 46-acre potato crop in 10-11 foot piles on the dirt floor, to house the entire grading operation, and will handle a large tractor-trailer truck at loading time. In the off-season it makes a convenient machinery storage shed. The block walls are steel reinforced, have concrete poured into the blocks, and are supported from the outside with block pilasters every 20 feet. L. F. Photo



"Dad and I like the way it leans into the load!"



You'll like the way your work goes with an Allis-Chalmers Series IV D-17!

Watch a Series IV D-17 turning four deep, even furrows and listen to its smooth power. See how its high crop clearance lives with low silhouette. Watch the operator riding soft and easy—shifting on-the-go; calling on

new live hydraulics; and pulling through tough spots with automatic Traction Booster. Figure the jobs a D-17 could do on your place—then come on in and let us show you how easy we make it for you to own one!

L. H. Brubaker
Lancaster, Pa.

Grumelli Farm Service
Quarryville, Pa.

L. H. Brubaker
Lititz, Pa.

Nissley Farm Service
Washington Boro, Pa.

N. G. Myers & Son
Rheems, Pa.

Allen H. Matz
Farm Equipment
New Holland, Pa.

Chet Long
Akron, Pa.