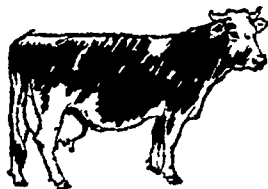


# Three Ways to Lick Drought Feeding Problems

With poor pasture, short hay and low quality the pressure is on your herd to maintain production. Milk output *can* drop off... herd health *can* suffer, if your feeding program does not overcome stresses resulting from drought conditions.

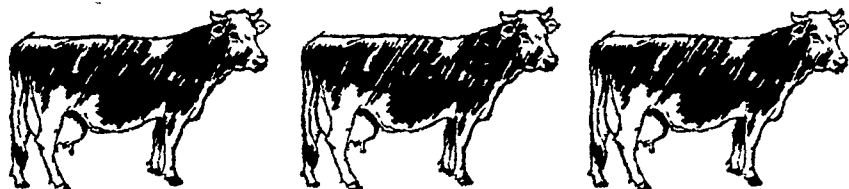
Agway has three recommendations designed to keep production up, and cows in good condition.



1. Make up for lack of protein and energy in your forage with Agway Pasture 14. This is Agway's new low-cost pasture supplement. Recommendation is for feeding once-a-day, at noon, one pound per 100 pounds of cow body weight.



2. Stretch short supplies of hay with Agway Bulky. Bulky is a forage extender, higher in energy than good hay.



3. Use Agway Milkerpels as your basic grain ration. With Milkerpels you can adjust protein levels to fit the quality of available forages. Milkerpels are 100% pelleted. Cows like them. And they are high in energy.

---

Don't wait until production begins to slide off. Call your local Agway Store or Representative and ask for details. *Agway Inc.*



DAIRY FEEDS & SERVICE