

MARKET NEWS REPORT

At Lancaster Yards

Weekly Review

September 10, 1965
CATTLE 3750: Slaughter steers steady to 25c lower; least decline on Mixed Choice and Prime. Cows mostly 50c higher. Bulls steady to strong. Feeder steers slow, steady to 50c lower. Supply included an estimated 35 percent Slaughter steers, 15 percent Cows and Bulls with the balance largely Feeder steers.
SLAUGHTER STEERS: Mixed Choice and Prime 1100-1275 lbs. 28.50-29.50, including Two loads at 29.00-29.50, Choice 950-1250 lbs. 27.50-28.50, 800-950 lbs. 27.00-27.75, High Good and Low Choice 26.75-27.50, Good 850-1225 lbs. 25.10-27.25, Utility 19.75-21.50.
SLAUGHTER HEIFERS: Choice 700-850 lbs. 23.85-24.85, Good 850-1225 lbs. 23.75-25.10, Utility 19.75-21.50.
SLAUGHTER HEIFERS: Choice 700-850 lbs. 23.85-24.85, Good 850-1225 lbs. 23.75-25.10, Utility 19.75-21.50.

(Continued on Page 12)

Auction Only

September 8, 1965
CATTLE 549: Supply included 549 head in Auction with balance Feeder steers. Slaughter steers about steady. Cows 50c higher. Bulls Fully steady. Supply included 20 percent Cows.
SLAUGHTER STEERS: Choice 950-1250 lbs. 27.35-28.50, 800-950 lbs. 27.00-27.75, High Choice and Prime 28.50-28.85, 3 head 29.35-29.50, High Good and Low Choice 26.75-27.50, Good 850-1200 lbs. 25.50-27.00, Standard 23.75-25.10, Utility 19.75-21.50.
SLAUGHTER HEIFERS: Choice 700-850 lbs. 23.85-24.85, Good 850-1225 lbs. 23.75-25.10, Utility 19.75-21.50.
COWS: Utility 15.60-17.75, Couple 18.10-18.50, Cutter 14.75-16.75, Few High Yield-

(Continued on Page 3)

Vintage Auction

Sept. 8, 1965

CATTLE 535: Slaughter Steers averaged steady. Cows fully 50c higher. Bulls fully steady. Supply included 30 percent Cows.
SLAUGHTER STEERS: Few High Choice and Prime 1100-1200 lbs. 28.75-29.00, Couple 29.25, Choice 1000-1275 lbs. 27.50-28.75, High Good to Low Choice 26.75-27.75, Good 25.75-26.75, Standard to Low Good 24.75-25.75, Standard 23.00-24.75, Utility 19.00-21.75.
COWS: Utility 16.25-17.50, Few 17.75-18.25, Cutter 14.50-16.50, Canner 13.50-14.50, Shelly Canner 10.75-13.00.
BULLS: Utility 18.60-20.60, Few Choice 22.50-24.50.
CALVES 670: Vealers mostly steady, although Cull weak to \$1.00 lower. Choice 31.50-35.00, Individual \$36.00, Good 28.50-31.00, Standard 25.50-28.50, Utility 22.50-25.50, Cull

(Continued on Page 3)

New Holland Auction

Sept. 9, 1965

CATTLE 1170: Slaughter steers uneven, averaged fully steady. Cows strong to mostly 50c higher, least advance on Utility. Good and Choice Bulls steady to 50c lower. Feeder steers fully steady. Supply included 21 percent Cows and 23 percent Feeder steers.
SLAUGHTER STEERS: High Choice and Prime 1075-1300 lbs. 28.75-29.50, Couple 29.75-30.25, Choice 950-1300 lbs. 27.50-29.25, High Good and Low Choice 26.75-27.75, Good 25.50-27.25, Standard 23.00-25.00.
SLAUGHTER HEIFERS: Choice 750-950 lbs. 24.25-25.50, Good 22.50-24.50, Standard 18.50-22.00.
COWS: Utility 15.75-17.75, Few 17.75-18.25, Cutter 14.50-16.50, Canner 13.25-14.25, Low Yielding Canner 10.75-13.25.
BULLS: Choice 23.85-26.00, Good 21.25-24.00, Utility and

Commercial 19.50-22.00, Cutter 17.25-19.00.
FEEDER STEERS: Good to Low Choice 550-1050 lbs. 22.25-24.85, Standard and Good 500-1000 lbs. 19.50-22.50.
CALVES 514: Vealers steady to \$1.00 higher. Choice 32.00-35.50, Few High Choice and Prime 36.00-38.50, Good 29.00-31.00.

(Continued on Page 12)

Chicago Cattle

Weekly Review

CATTLE: The receipts 21,200 for the holiday shortened period compared with 23,000 last week and 21,900 a year ago; twelve market supply 170,500 compared with 190,400 last week and 162,300 a year ago. Slaughter steers steady to 50 lower, slaughter heifers 25-50 lower; cows 25-50 higher; bulls mostly 50 higher. In the carlot dressed beef trade, steer beef steady to 1.00 higher, heifer

(Continued on Page 12)

Vintage Sales Stables, Inc.

PARADISE, PENNA.

Bulls, steers, butcher cows, Hogs, lambs and veal calves Sold On Commission Sale every Tuesday 2 P.M.

Fat hogs and Feeder pigs sale Every Saturday at 10 A.M.

For marketing information Phone Area Code 717-442-4181 Box 100 Paradise, Pa.

10 mi. East of Lancaster on Rt. 30

Kenneth E. Hershey, Sales Manager

New Holland Sales Stables, Inc.

Sale Schedule

Monday: Horse Sale 10:00 A.M.
 Tack Sale to Follow Horse Sale
 Monday: Hog Sale 11:30 A.M.
 Monday: Beef Cattle 2:00 P.M.
 Sale Order — Bulls, Steers, Cows, Calves
 Wednesday: Sale of Dairy Cattle 12:30 P.M.
 Thursday: Sale of Beef Cattle 12:30 P.M.
 Sale Order — Bulls, Steers, Cows, Calves

JOHN H. GINGRICH, Mgr.

Ph. New Holland 354-2194

New Holland, Pa.

How Would You Like To Have A 5 Year Champion Corn Picker On Your Farm?

- New and Used Pickers
- Forage Harvesters

Allen H. Matz, Inc.

New Holland — Denver

AUCTION OR PRIVATE TREATY

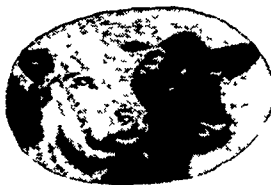
YOU DECIDE BY WHICH METHOD YOU WANT YOUR CATTLE SOLD AND THEN

Consign With Confidence

TO

Walter M. Dunlap & Sons

LIVESTOCK BROKERS



CATTLE • CALVES • HOGS • SHEEP

Union Stock Yards, Lancaster, Pa.

Tel: 397-5136

- Cattle Auction Every Wednesday Starting At Noon
- Listen To Our Market Newscast Monday and Wednesday At 7 A.M. WLAN 1390

"THE OLD DEPENDABLE" — SECOND TO NONE

BOOK BEEF FEEDS NOW!

- Quality Concentrates
- Long Booking Period
- High Vitamin "A" Content
- Complete Nutrient Balance

Our Booking Program Offers

REAL Price Protection — See Us For Details

EBY'S
MILL
LITITZ



HEMPFIELD
MILLS
EAST PETERSBURG