

TDN

(Continued from Page 1)
 ing purposes before the full
 stage," Dr. Bratzler com-
 mented.
 The Agricultural Experi-
 ment Station researcher added
 that nutrient losses from seep-
 age were low from silage made
 at full dent stage. These loss-
 es amounted to less than 10
 percent in experimental silos
 and were caused mostly by
 fermentation and handling. On
 the other hand, nutrient loss-
 es were over 20 percent, most-
 ly from seepage, from silage
 made at early stages of ma-
 turity in similar silos.

Results of current experi-
 ments question the practice
 of plowing under the stalks
 and leaves of corn plants sole-
 ly to improve the soil fertility.
 Harvested as silage, the corn
 plant will produce about one
 and one-half times more feed
 nutrients per acre than from
 the ears alone, Dr. Bratzler
 reported.

● **Cow Wash**

(Continued from Page 1)
 operation of milking machines.
 Harold R. McCulloch man-
 ager of the dairy show, said
 stalls being readied include
 nearly 1,000 in the main ex-
 hibition hall to accommodate
 overflow after all barns and
 sheds are filled.
 Stainless steel sinks that
 were salvaged from state stor-
 age have been erected at con-
 venient locations for sanitiz-
 ing milking utensils.
 McCulloch said most of the
 cows will be in milk, and that
 a 35-capacity milking parlor
 will operate adjoining a cen-
 tral milk house.

Milk handling, by bulk tank,
 will be supervised by the
 Pennsylvania Dairy Associa-
 tion Exhibitors whose cows
 produce 200 pounds or more
 milk will be reimbursed with
 a nominal deduction for hand-
 ling charge.

State Agriculture Secretary
 Leland H. Bull said the show
 will be sponsored by his de-
 partment, its Farm Show Com-
 mission and the Pennsylvania
 Dairy and Allied Industries
 Association, of which Cuth-
 bert Nairn, Douglassville, is
 president. It is open to breed-
 ers in the United States and
 Canada, and is free.

● **Sod Houses**

Those who homesteaded on
 the plains in the 1870's found
 very few trees there and so
 they used the good sod and
 built houses and outbuildings
 similar to this one. Sometimes
 they built up against a bank
 as that required less sod and
 work.



LORAE HARBALD of Elizabethtown R1 took first place with her interme-
 diate calf Grayholm Skyliner Crissy at the district black and white show this
 week at Hershey.

● **Black & White**

(Continued from Page 4)
 dale, was bred in the herd of
 Warren Bollinger, and gave
 the Ephrata High School jun-
 ior his first win in major
 dairy competition. He plans
 to come back for more in
 next week's FFA district show
 at Hershey. Reserve junior
 champion female was John
 Umble's 'Swampy Hollow Cin-
 derella from Atglen area of
 Chester County.

The grand champion bull
 title also went to the county
 herd of Robert Kauffman. The
 junior yearling is Penn
 Springs Leader, a son of
 Moosehart Pioneer, out of
 Kauffman's Penn Springs Re-
 gal Lucy.

Countians also scored in the

club herd division with Hess,
 Kauffman, and J. Mowery
 Frey Jr., 401 Beaver Valley
 Rd., Lancaster, teaming up to
 supply the winning entry.

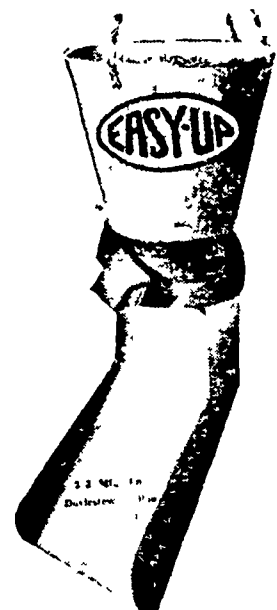
In the junior get of sire
 class, Melvin G. Peifer of 1831
 Hans Herr Drive, Lancaster,
 and Frey, the only county en-
 tries, took the first and sec-
 ond spots respectively.

Other classes won by area
 dairymen included: interme-
 diate calf—Lorae Harbold, Eliz-
 abethtown R1; senior heifer
 calf—J. Mowery Frey, Jr., dry
 cow, three and four year old—
 J. Robert Hess, 2-year-old

heifer, never fresh—Conewago
 Farms, Elizabethtown R2, four-
 year-old cow—John M. Umble,
 with second place going to J.
 Mowery Frey, Jr.

Judging in the 33-class
 event was on the modified
 Danish system which qualifies
 all blue and red ribbon win-
 ners to participate in the
 Pennsylvania Black and White
 Show at Harrisburg on Sep-
 tember 14.

About half the fires on the
 farm occur in the home, ac-
 cording to the National Safety
 Council.



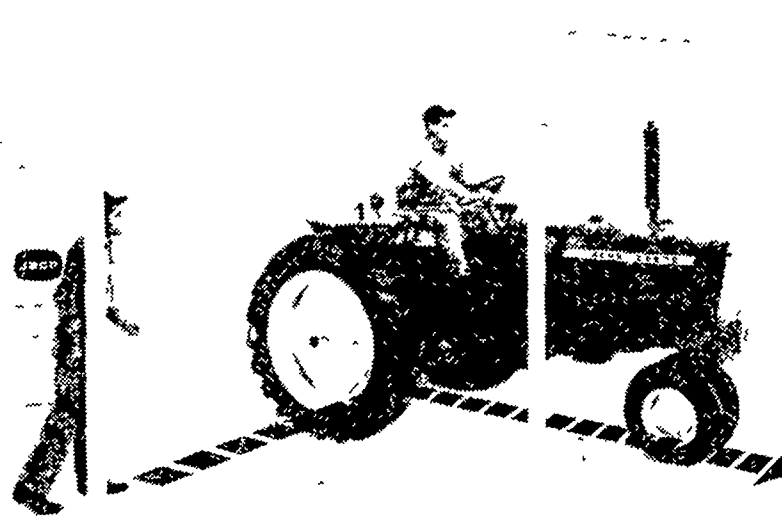
Silage Distributor

- Up to 20% more silage in silos with even distribution.
- Light weight 28 lbs.
- Fits conventional or glass-lined silos.
- Gear driven with a powerful electric gear-reduction motor
- 4 years tested and approved.

SEE US TODAY

L. H. Brubaker

350 Strasburg Pike, Lancaster
 R. D. 3, Lititz
 Phone Lancaster 397-5179
 Strasburg 687-6002
 Lititz 626-7766



The Credit Plan is a Shortcut to Equipment Ownership

The John Deere Credit Plan helps you keep your equipment program up to date, puts new equipment to work boosting your profits, and lets you purchase those machines you need when you need them. Every phase of this plan—down payment, trade-in, scheduling of payments, insurance—can be thoroughly customized to your requirements. Everything is confidential, strictly between us. The John Deere Credit Plan is a practical, convenient, and desirable method of purchasing farm equipment without unnecessary budget problems. It is another benefit you gain when you go with John Deere—The Long Green Line.



A. B. C. Groff, Inc. **Landis Bros. Inc.**
 New Holland 354-8001 Lancaster 393-3906

Shotzberger's **H. S. Newcomer & Son**
 Elm 665-2141 Mt. Joy 653-3361

Alan Beyer **M. S. Yearsley & Sons** **Wenger Implement Co.**
 Christiana LY 3-5687 West Chester 696-2990 Buck BU 4-4467

FREE!

Rain Gauge



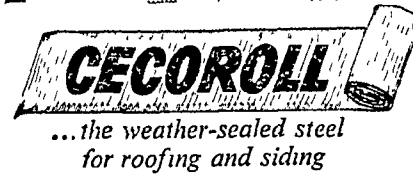
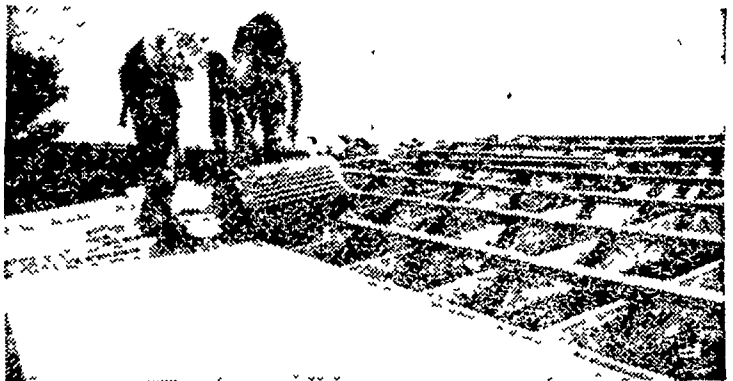
THOR
 Electric
 Scissors Kit
 (Limit one kit per family)



FREE—For letting your dealer figure your next farm roofing job, using CECOROLL, the weather-sealed steel roofing and siding. No obligation. Offer ends October 30, 1965.

A Thor Electric Scissors Kit—\$9.95 value—given FREE of extra cost with purchase of 20 or more rolls of CECOROLL for one specific building. Don't wait. See your dealer or write to Ceco.

CECOROLL IS THE COMPLETE WEATHERTIGHT COVER FOR YOUR BUILDING



Nails tight. Self-sealing.
 "Just roll it on and nail it down." Galvanized steel ... or baked-on colors.

MANUFACTURED BY THE CECO CORPORATION



MR. FARMER: Take this ad to these dealers.

L. J. DENLINGER & SON
 Paradise, Pa.

ELIZABETHTOWN BUILDING & SUPPLY CO.
 Elizabethtown, Pa.