

For The Farm Wife

(Continued from Page 8)

to soft peak stage. Reduce speed slightly and gradually add 1/2 cup sugar, about 1 tablespoon at a time. Add vinegar then gradually add another 1/2 cup sugar. Add vanilla; add last 1/2 cup sugar gradually by tablespoon and continue to beat until very stiff. Using a spoon, shape meringue in buttered 9-inch pie plate, building up edges to form shell. Bake in preheated 275 degree oven 1 hour, 25-30 minutes. Cool completely. Fill with softened ice cream and freeze. To prepare Sauce: In saucepan combine topping and cream; heat until warmed. Blend in extract and candy; tint to desired color with food coloring. Serve warm over Angel's Kiss Pie. Makes 8 servings.

WHIRL 'N SWIRL PEANUT PARFAIT
pint coffee ice cream
stick (1/2 cup) butter or

margarine
1 tablespoon light corn syrup
1/4 cup cream
3 tablespoons peanut butter
Chopped peanuts
Whipped cream

Combine butter and corn syrup in a small saucepan. Stirring constantly, heat to boiling and continue heating 3 to 4 minutes. Remove from heat. Slowly add cream blending well after each addition. Mix in peanut butter. To make parfaits, put one scoop of ice cream in the bottom of each chilled parfait glass. Top with sauce and chopped nuts. Continue to alternate ice cream, sauce, and nuts until glasses are filled. Top each with a spoonful of whipped cream. Garnish with peanuts. Serve immediately. Serves 4.

RASPBERRY LEMON CRUNCH SUNDAE

2 pints raspberry or lemon sherbet
2 tablespoons butter or margarine
1 cup crumbled macaroons

1/4 cup chopped nuts
1 tablespoon grated lemon rind

Raspberries
Melt butter in a small skillet. Add macaroons, nuts, and lemon rind to melted butter. Stir and heat topping mixture. Scoop sherbet into serving dishes. Sprinkle macaroon topping over sherbet. Top with raspberries.

EASY CHOCOLATE TOPPING FOR ICE CREAM: In a saucepan over low heat, combine 1 package (6 ounces) semi-sweet chocolate pieces and 1/2 cup whipping cream. Heat until chocolate melts. Stir in 1/2 teaspoon vanilla. This keeps in the refrigerator for at least a week.

CRISPY ICE CREAM BALLS: Scoops of ice cream are rolled in chopped nuts, flaked coconut, or crushed dry cereal, and topped with sauce or fruit of your choosing. Serve on chilled plates.

LENGTHEN HOUSE

To make a little house look bigger, build a porch the length of the house front, with steps to porch leading up from one end. Use 2x4s on edge and set at right angles to house walls. Keep porch railing to a simple pattern; a handrail with a minimum of supporting uprights gives a good, lengthening horizontal line.

Newspaper advertising is inexpensive — it reaches more known families for less money.

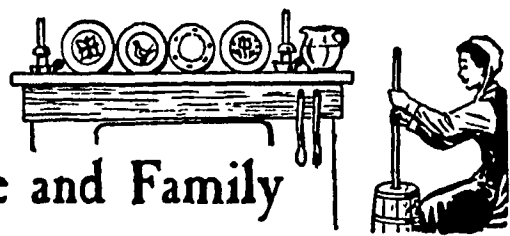
PATZ

Sales & Service

Barn Cleaners - Silo Unloaders - Cattle Feeders

Robert K. Rohrer

Quarryville, R. D. 1
Hensel KI 8-2559



For the Farm Wife and Family

By Doris Thomas, Extension Home Economist

Ladies, Have You Heard? . . .

What To Look For in Packaged Bacon

Thin-sliced bacon is usually packaged in eight-ounce, twelve-ounce, and one-pound packages; about 35 slices per pound.

Regular-sliced bacon is usually packaged in one-half, one-pound, and two-pound packages; about 22 slices per pound.

Thick-sliced bacon is both stacked and shingled in one, one and a half, and two-pound packages. Average is 18 slices per pound.

Ends and pieces are available in one-pound packages and boxes, three-pound cartons, and four and five-pound boxes.

Slab bacon is sold by the piece for home or market slicing.

Precooked bacon comes in cans that require no refrigeration; 18 to 20 slices in each can are equivalent to one pound of uncooked bacon. Canned bacon slices need three to five minutes of heating before serving.

Bacon crumbles or bits are completely cooked and crumbled, ready to add to casseroles, sandwiches, or to any dish that bacon flavor will improve.

One Way to Clean Bathroom Tile

Hard water and soap film probably cause the cloudy or discolored look of ceramic tile in the bathroom and shower stalls.

If the film doesn't disappear after ordinary wiping with a detergent and water solution, try cleaning it with

a water softener or conditioning agent. Make a solution of one cup of a packaged water softener and four or five quarts of water. Dip a sponge in the solution, then wash a small area of the wall. Rinse with clear water, then wipe the tile before it has a chance to dry. To make the clean tile sparkle, wipe it with a soft, dry towel.

Serve Family Nutritious Salads

If salad will be the main dish of the meal, include a protein food. Eggs make a fine addition — eggs may be hard-cooked and sliced, deviled, or chopped. Sliced cold turkey, ham, and chicken are salad favorites. Of you may choose to serve fish or seafood as the protein food in a salad. Another welcome food

(Continued on Page 10)



THOMAS

Shop at . . .

GROFF'S HARDWARE

during

New Holland Bargain Days

July 22 - 23 - 24

Many additional specials not advertised

in the Bargain Days Circular

GROFF'S HARDWARE

New Holland



**Now . . .
two sizes**

John Deere
Rotary Choppers

Yes, sir, John Deere Rotary Choppers now come in two sizes. There's the 5-foot 15-A for average-acreage growers . . . and the 6-foot 16-A for large-acreage growers.

The rugged 15-A and 16-A are just the ticket for mechanical pasturing, chopping standing hay for silage, shredding brush and stalks, clipping pastures and handling many other jobs around the farm.

See us soon for full details.

Wenger Implement Co. M. S. Yearsley & Sons Landis Bros. Inc.
Buck BU 4-4467 West Chester 696-2990 Lancaster 393-3906

Alan Beyer H. S. Newcomer & Son
Christiana LY 3-5687 Mt. Joy 653-3361

A. B. C. Groff, Inc. Sholtzberger's
New Holland 354-8001 Elm 665-2141



FREE!

Rain Gauge



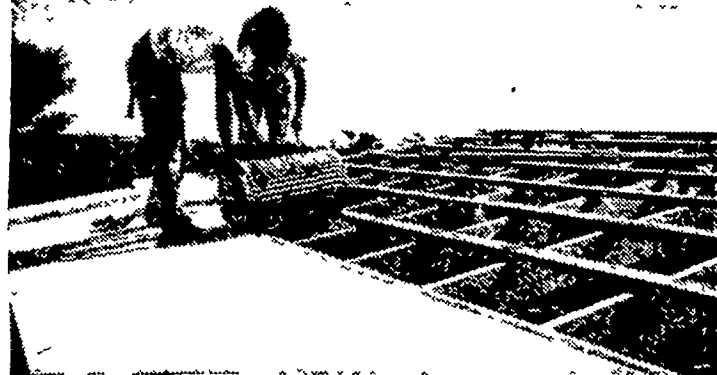
THOR Electric Scissors Kit
(Limit one kit per family)



FREE—For letting your dealer figure your next farm roofing job, using CECOROLL, the weather-sealed steel roofing and siding. No obligation. Offer ends October 30, 1965.

A Thor Electric Scissors Kit—\$9.95 value—given FREE of extra cost with purchase of 20 or more rolls of CECOROLL for one specific building. Don't wait! See your dealer or write to Ceco.

CECOROLL IS THE COMPLETE WEATHERTIGHT COVER FOR YOUR BUILDING



Nails tight. Self-sealing. "Just roll it on and nail it down." Galvanized steel . . . or baked-on colors.

...the weather-sealed steel for roofing and siding

MANUFACTURED BY THE CECO CORPORATION



MR. FARMER: Take this ad to your local lumber or building materials dealer.

MR. DEALER: Check with us for your supply of rain gauges.

GROCE DISTRIBUTORS, INC.

Selinsgrove, Pa.

Phone 374-8157 (717)