

4-H Club News

4-H Light Bulb Sale Gets Under Way Today

The annual fund-raising drive for the Lancaster County 4-H Clubs begins today and runs through August 3. It involves the retail sale of light bulbs.

All participating members are asked to support this drive which yearly helps to "light-up" many 4-H activities in the county.

The County Extension Office advises that supplies of bulbs may be picked up today between the hours of 8 a.m. and 2 p.m. at 1134 Lititz Pike.

The profit realized will be 40 percent. The Executive Board has planned to use the profit made by this sale as follows: 5 percent for sales tax; 10 percent returned to local clubs; and 25 percent to Leader's Council for county-wide 4-H use.

LAMPETER-STRASBURG COOKS

by Carol Groff

The Lampeter-Strasburg 4-H Cooking Club met at the home of Mrs. Robert Hess on Tuesday, July 6.

Mrs. Doris Thomas, Home Economist, gave a demonstration on how to make Yeast Rolls, which they will be making at the Roundup at Penn Manor.

A demonstration was given by Donna Welk and Carol Groff on how to make Peanut Butter Fudge.

The next meeting will be at the home of Mrs. Robert Hess on Tuesday, July 13.

KOOKIE KOOKS AT WORK

by Peggy Eshleman

The Penn Manor Kookie Kooks met Wednesday, July 7 at Penn Manor Junior High School.

The Tasty Snack girls made grilled cheese sandwiches and punch.

The Meal Time Magic girls made yeast rolls and chocolate milk

Samples were given to the parents.

The next meeting will be held July 14.

L-S SEWING CLUB

by Sue Mumma, reporter

The Landisville Salunga 4-H Sewing Club met Tuesday, July 6 at the Hempfield Senior High School; 18 members were present.

President Mary Ann Eshelman presided. Songs and games were conducted by respective leaders.

Diane Kauffman gave a demonstration on "How To Mark a Pattern," and members paid 10 cent dues.

The meeting was adjourned and a work period followed.

The next meeting will be held on July 12 at the same time and place.

Newspaper advertising is expensive — it reaches more known families for less money.

Chicago

(Continued from Page 2)

28.75, few loads high choice and prime 1050-1150 lbs 27.25-28.00, choice 1000-1350 lbs. 26.50-27.75, bulk 26.75-27.50, several loads choice 900-1000 lbs. 26.00-26.50, loadlots mixed good and choice 900-1300 lbs. 25.50-26.50, including load 1250 lbs. 26.50, good 23.50-25.75, standard and low good 21.00-24.00.

Slaughter heifers: High choice and prime 950-1075 lbs. 26.25-27.00, two loads 1050-1070 lbs. at 27.00, choice 850-1050 lbs. 24.75-26.25, choice 750-850 lbs. 24.00-25.75, mixed good and choice 750-1000 lbs. 23.25-24.75, good 21.00-24.00.

Cows: Utility and commercial 14.50-15.75, few late 16.00, canner and cutter 12.00-14.75, mostly 12.50-14.50.

Bulls: Utility and commercial 17.50-20.00 xxx 17.50-20.00, few fat commercials 16.00.

Feeders: Load choice 760 lb. heifers 23.00.

Alexander Graham Bell invented the telephone while trying to build an electric organ.

Get the BIG silo unloader value!

VanDale

Delivers more silage faster!

• Double auger system digs the silage faster and more evenly under all conditions whether silage is frozen, wet, or dry.

• Exclusive, adjustable drive hub gives more positive traction, keeps the machine operating evenly, and requires less power.

DELIVERS BETTER SILAGE TOO!

The double augers, operating in conjunction with the patented V-paddle impellers, dig the silage, mixes it thoroughly, and then throws it down the chute. Your cows and cattle get good, palatable silage... not a powdered mash as so often happens with unloaders using blowers.

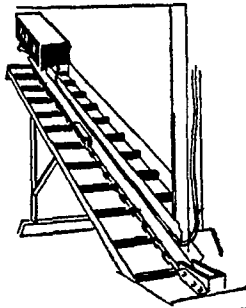
TWO SIZES:

Standard—for silos 10' to 18'
Heavy Duty—for silos 18' to 30'

CALEB M. WENGER
R. D. 1, QUARRYVILLE, PA.
Drumore Center KI 8-2116

WRITE OR PHONE US FOR COMPLETE INFORMATION AND PRICES.

for power economy



choose a



BARN CLEANER

POWER-MATCHED TO YOUR HERD SIZE

★ **MORE MILEAGE** from chain that's hardened clear through and designed exclusively for barn cleaner service.

★ **DEPENDABLE** Starline has been building high quality dairy barn equipment since 1883.

★ **COMPARE** the features of a Starline Barn Cleaner with any other and you'll know why it's the Buy of a Lifetime.

BARN CLEANERS—SILO UNLOADERS—BARN EQUIPMENT

L. H. BRUBAKER

350 Strasburg Pike, Lancaster

R. D. 3, Lititz, Pa.

Phone: Lanc. 397-5179 — Strasburg 687-6002 — Lititz 626-7766



Dairymen!
CONTROL FLIES
with
CIODRIN
and
VAPONA

Combination Spray

Approved for use on dairy cattle.

Alfalfa FERTILIZER
0-20-20
3-12-12

Available in Bulk, Bags or Spread

ORGANIC PLANT FOOD CO.

Grofftown Rd.

next to Waterworks

Ph. 392-4963 or 392-0374

RURAL YOUTH

(Continued from Page 3)

State Agriculture Secretary Leland H. Bull.

The soil judging contest, for boys aged 12 to 19 years, will feature youth activities at a Forage Progress Day sponsored by the Pennsylvania Grassland Council, of which Burton S. Horne, University Park, is president. Cash prizes will total \$200 — \$40, \$30, \$20 and \$10 for the first four places in each of two divisions for 4-H and FFA youths.

Secretary Bull, who will officiate at an awards ceremony, said the soils contest is closely related to work being done

by the State Soil and Water Conservation Commission in his department.

Contest nominees will be selected by county agricultural agents and vocational agriculture teachers and entered not later than August 1 with Dr. Milford Heddleson, University Park, contest chairman.

Contestants will be required to identify four different types of soil according to appropriate farm use. Working near the main field day operations, they will rate the soil samples for organic content, general texture (fine, medium or coarse), and stoniness.



"It does pay to use limestone"

Good crops deplete good nutrients from the soil. Replace your limestone regularly to assure large crops.

Martin's Limestone

IVAN M. MARTIN, Inc.

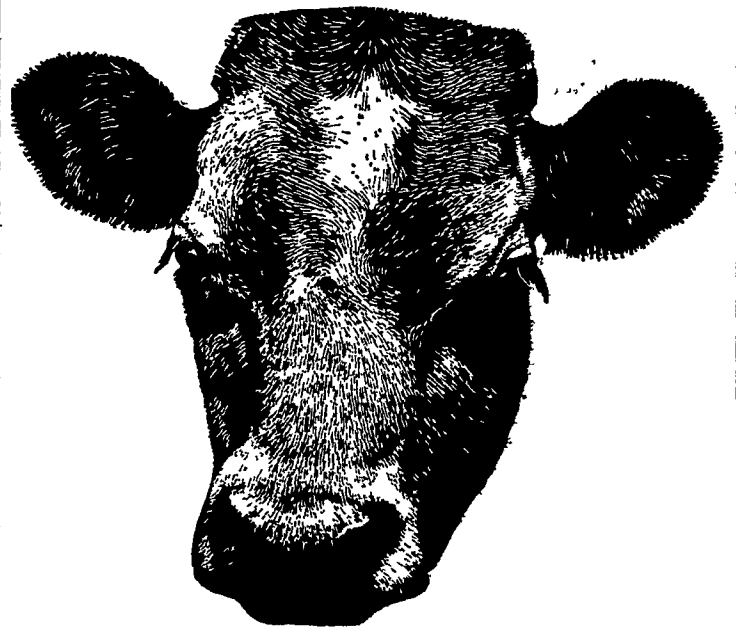
BLUE BALL, PA.

New Holland 354-2112

Terre Hill 445-3455

Gap 442-4148

When she freshens...



WILL SHE BE A TOP PRODUCER?

Management-for-profit the PIONEER way starts with feeding the dry cow. PIONEER feeding programs give to the dry cow the nutrients she needs to maintain body reserves, produce a vigorous, healthy calf, and freshen strong, ready to go into top production and maintain the pace right through lactation. The feed with the lowest price tag is not always a bargain. PIONEER feeds cost less because they produce more — earn greater profits. A dry cow, fed only 600 lbs. of PIONEER, may return as much as 2,000 lbs. more milk as a result, and 2,000 lbs. of milk at \$4/cwt. means a return of \$80 in extra milk production, a bonus profit.

There's profit in PIONEER. Stop in soon and talk over your operation with us. Remember, there's a PIONEER feed to fit your need.



GOOD'S FEED MILL

New Providence