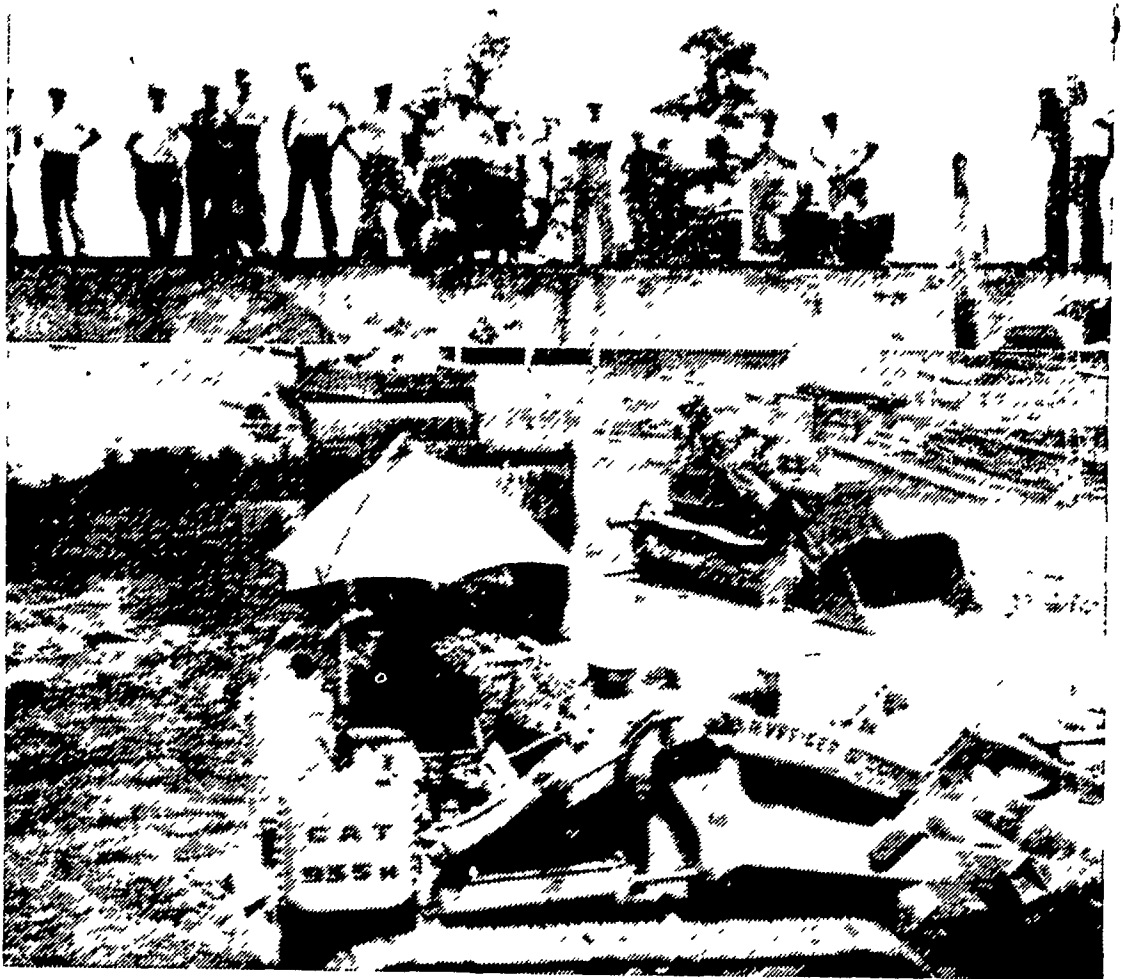
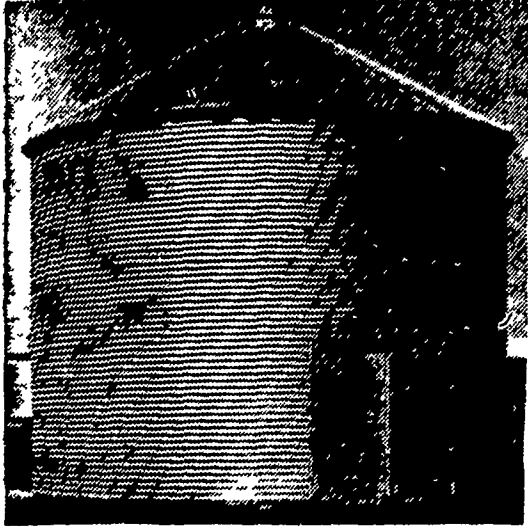


**● Crop Summary**  
 (Continued from Page 12)  
 during the week that ended July 5 brought needed moisture to some sections, especially parts of Schuylkill, Berks and Lancaster counties. Most areas, however, remained dry. Total rainfall for the month of June throughout the state ranged from about 30 to 70 percent of normal. The ex-

tremes were Blair County, where precipitation was only 15 percent of normal, and northwestern counties where rainfall exceeded normal. Corn, potatoes and tobacco are generally progressing satisfactorily but need additional rain. Hay fields and pastures also need rain, and second growth alfalfa is reported short in many sections.



AFTER THE HANDWORK, a few friends and neighbors remain to watch the machines move in for the final cleanup at the scene of last week's disastrous fire at the Ray Longenecker farm, Lititz R2. Over 125 volunteers were on hand Tuesday to help Longenecker clear away the debris as the first step toward rebuilding his cattle feeding operation.



**B  
R  
O  
C  
K**

DUAL PURPOSE GRAIN BINS  
 For Grain Storage and Drying  
 Brock Quality Is Now In The Grain Bin Field

— 18 MODELS —  
 18 - 21 - 24 Foot Diameter Bins  
 Capacity From 2200 to 9500 Bushel  
 See Your Brock Grain Bin Dealer Now  
 Or Write For Literature

Distributors of quality poultry and hog equipment.

We sell, service, guarantee installation.

Beacon Steel Cages, Hart Cup Watering Systems, Brock Feed Bins and Grain Bins, Aerovent Ventilation, Oakes Mechanical Cage and Floor Feeders and Hog Equipment, Herrmatic Feed Carts, Egg and Manure Handling Equipment.

**E. M. Herr Equipment, Inc.**

"Pioneer of Laying Cages"

R. D. 1, Willow Street (Lancaster Co.) Pa.  
 717-394-0654

**● Have You Heard?**

(Continued from Page 9)

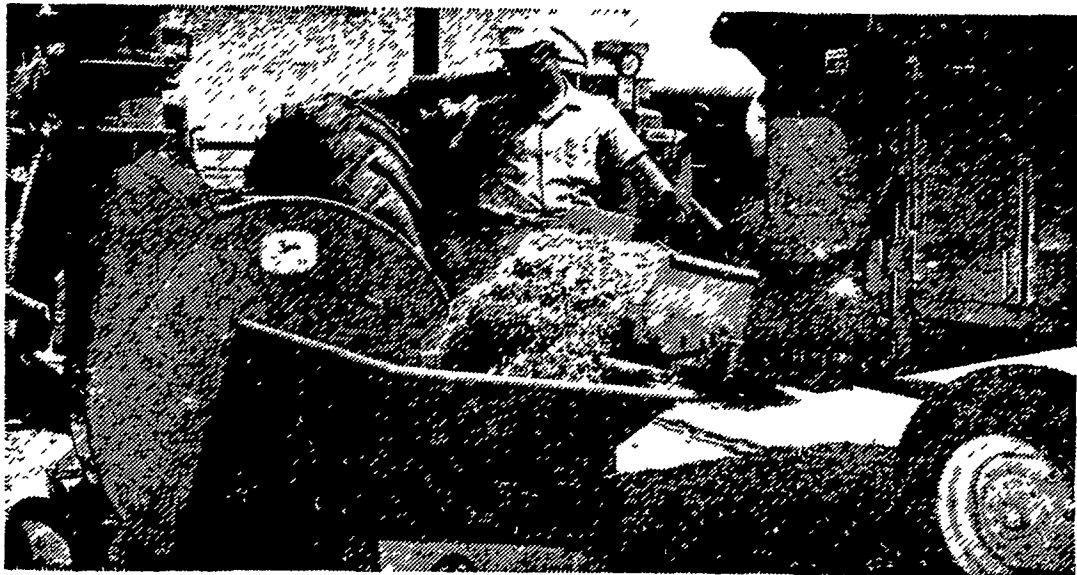
whole milk. You must keep skim milk in the refrigerator so it retains its freshness.

You can use skim milk just as you do whole milk on cereals, turnovers, and deep-dish fruit pies. It also goes well in soups, sauces, custards, and puddings.

You add flavor to family meals when you use skim

milk and at the same time calories. Actually one eight-ounce cup of skim milk con-

ished dish and reduce the fats about 90 calories.



**Efficiency Plus**

**John Deere 60-H Hopper Blower**

A wide range of fan speeds matches the John Deere 60-H Hopper Blower to silo height... type of crop blown... and the available horsepower. This is a John Deere exclusive! Look at these other features: auger feed... 9-inch pipe... and an adjustable band around the fan to permit blower to set away from the silo and still keep the pipe straight. Ask us today about the efficient 60-H Blower. Our Credit Plan makes ownership easy.

- |                             |                                  |                                 |
|-----------------------------|----------------------------------|---------------------------------|
| <b>Wenger Implement Co.</b> | <b>M. S. Yearsley &amp; Sons</b> | <b>Landis Bros. Inc.</b>        |
| Buck                        | BU 4-4467                        | West Chester 696-2990           |
|                             |                                  | Lancaster 393-3906              |
|                             | <b>Alan Beyer</b>                | <b>H. S. Newcomer &amp; Son</b> |
|                             | Christiana LY 3-5687             | Mt. Joy 653-3361                |
|                             | <b>A. B. C. Groff, Inc.</b>      | <b>Shotzberger's</b>            |
|                             | New Holland 354-8001             | Elm 665-2141                    |



Choose from The Long Green Line of Customized John Deere Equipment

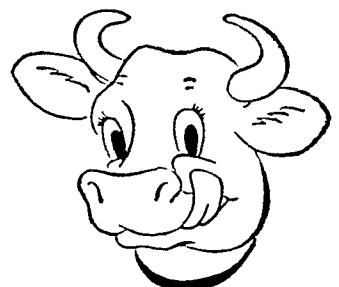


**WAYNE  
SWEET  
BULKY  
FEED**

**HELPS IMPROVE DAIRY RATIONS**

Add variety and bulk to your dairy rations and improve palatability with WAYNE SWEET BULKY.

Rich in beet pulp, molasses and minerals, WAYNE SWEET BULKY greatly improves rations fed to dry, fresh and milking cows. Good for growing heifers, too!



See us today for  
 WAYNE SWEET BULKY FEED



- |   |  |
|---|--|
| <b>HERSHEY BROS.</b><br>Reinholds   | <b>GRUBB SUPPLY CO.</b><br>Elizabethtown             |
| <b>POWL'S FEED SERVICE</b><br>R. D. 1, Quarryville<br>R. D. 2, Peach Bottom | <b>J. K. STAUFFER &amp; SON</b><br>Lawn and Bellaire |
| <b>C. E. SAUDER &amp; SONS</b><br>R. D. 1, East Earl                        | <b>DUTCHMAN FEED MILLS, INC.</b><br>R. D. 1, Stevens |
| <b>H. M. STAUFFER &amp; SONS, INC.</b><br>Witmer                            | <b>MOUNTVILLE FEED SERVICE</b><br>R. D. 2, Columbia  |
| <b>MILLERSVILLE SUPPLY CO.</b><br>Millersville                              |  |
| <b>ROHRER'S MILL</b><br>R.D. 1, Ronks                                       |  |