

Conservation District Directors Caution City Dam Planners About Siltation Condition In Conestoga

The Lancaster County Soil and Water Conservation District Directors expressed concern Monday night at their regular monthly meeting over the proposed dam on the Conestoga Creek. Chairman Amos Funk formulated a statement to be delivered to the proper authorities.

"While the Directors applaud the city's plan to build a second dam on the Conestoga Creek to store large quantities of water for use during dry periods, they view with misgivings the lack of apparent consideration being given to the chronic silting condition that exists in the creek now, and that will continue to exist until proper conservation measures are taken in the agricultural area above the proposed dam," Funk said.

The Directors stated that less than 25 percent of the land involved is under adequate conservation. Wayne Maresch, county conservationist, estimated that silt-producing areas like those in the Conestoga watershed will pour from 4 to 20 tons of silt per acre per year into the creek. Although federal funds are not involved in the proposed project, Maresch pointed out for comparative purposes that the federal government insists that any similar project receiving federal funds must be at least 75 percent covered by approved

conservation plans before being eligible for funds.

The siltation condition in the Conestoga was reportedly the subject of a three-year study made by the U. S. Geological Survey. Funk reported that the results of that study are still being summarized and have not as yet been released. He suggested the city should be aware of those results before going on with the dam construction.

The directors also made plans for the county plowing contest which will go to contour rather than level-land plowing this year for the first time. The contest will be held at the Darlington Farm, located just north of Elm, on July 27 (rain date July 29). It is hoped that a field day can be combined with the plowing contest this year. Co-chairmen for the twin event will be Aaron Stauffer, exhibits and field day; Elmer Good, plowing contest. It was suggested that demonstrations on wheel-track planting, terracing, and other conservation methods would be of interest to attending farmers, and would help to further an understanding of the importance and application of conservation.

A joint meeting is scheduled with the Lancaster County Planning Commission for July 19 so that the District Directors can get a better un-

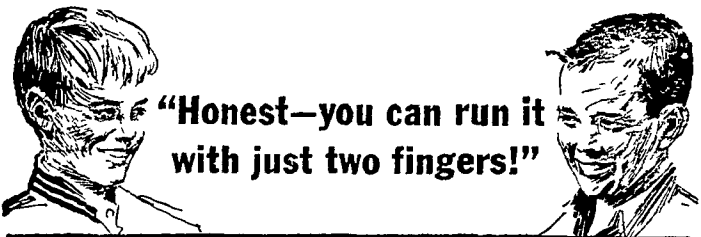
derstanding of the long-range thinking of the Commission. This will be followed by another joint meeting on August 9 so the Directors can present their ideas to the Commission on the areas in the county that should be considered agricultural in any long-range plan.

Maresch, reporting on the conservation work accomplish-

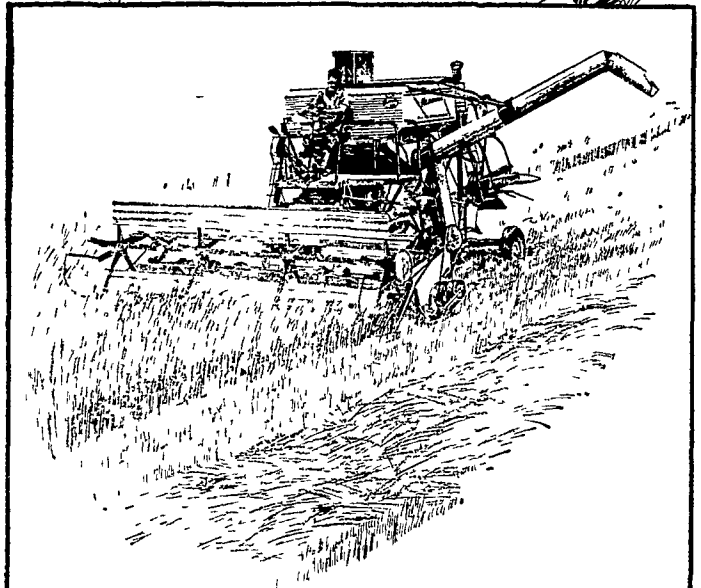
ed by his staff during May, said that 21 landowners had actually applied practices during the month; 8 had completed basic plans for conservation work; 2075 linear feet of diversion terraces had been installed; 4.2 acres of grass waterways had been constructed; 96 acres of strip cropping; 16,560 linear feet of cropland terraces; 1701

linear feet of tile — giving a total for May of 2171 acres that were adequately treated.

Maresch also reported that since last July 1st, 89 new plans had been inaugurated — this represented a 32 percent increase over the quota of 75 plans. He asked the Directors to approve cancellation of 174 out-dated plans. (Continued on Page 10)



"Honest—you can run it with just two fingers!"



Easy operation and big capacity—Allis-Chalmers A¹¹ Gleaner Combine!

Operator's left hand never has to leave the wheel! Even adjust cylinder speed from the platform to fit crop conditions. Huge 13-foot separation area gives thorough threshing. Quick-change headers to regular or narrow-row corn heads. Reputation of the Gleaner rests solidly on great performance!

Nissley Farm Service
Washington Boro, Pa.

L. H. Brubaker
Lancaster, Pa.

Allen H. Matz
Farm Equipment
New Holland, Pa.

Chet Long
Akron, Pa.

Grumelli Farm Service
Quarryville, Pa.

N. G. Myers & Son
Rheems, Pa.

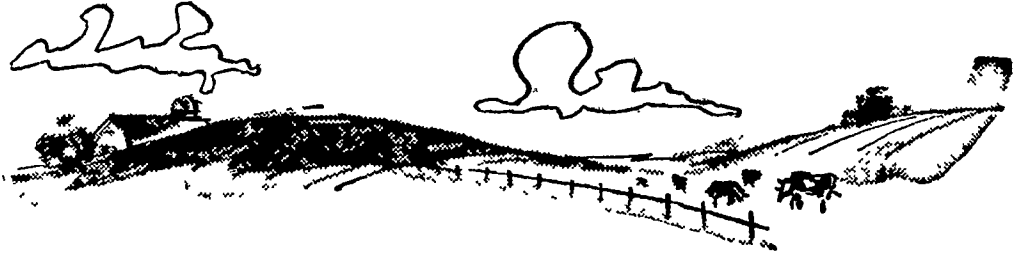
L. H. Brubaker
Lititz, Pa.

Some Thoughts For...



Dairy

Farmers!



June Is Dairy Month

- Did you do all you could to help promote your industry in the past year?
- Do you talk milk to consumers?
- Do you explain its many nutritional advantages?
- Do you set the example when you take your family out for a meal and order milk as the beverage?
- Do you have the feeding program which gives you the best return per dollar spent?

If you are in doubt about this last item talk to our Nutrition Department or our Dairy Specialist.

What else can we do to help you?

Just call



Miller & Bushong, Inc.

Rohrerstown, Pa.

Ph. Lancaster 392-2145

(Area Code 717)