

Farm Women No. 1 Make Donations

Mrs. Daniel Brubaker entertained the Society of Farm Women No. 1 at her home at Ephrata R1 on Saturday afternoon with Miss Rachel Bollinger as co-hostess.

Mrs. Clayton Sangrey, the president, was in charge and Mrs. Martin Moore led the devotions. Twenty members attended.

Contributions were made to the Migrant fund, a County project, and to the State Scholarship fund. A family picnic will be held on Saturday, June 26, at the Middle Creek Church pavilion and the picnic for all the Societies of the County will be held at Long Park on Tuesday, August 3.

Two new members were received into the membership of the Club, Mrs. John L. Weaver and Mrs. Charles Ackley.

Mrs. Martin N. Swarr was the guest speaker. Her subject was "Romance of Roses." She discussed the planting and raising of the flower, the making of potpourri and displayed and served candy she had made from roses. Another feature of the program was several songs by Kenneth Brubaker, small grandson of the hostess.

Mrs. Sangrey announced a history has been written of the Societies of Farm Women in the State of Pennsylvania and is now available on order.

Farm Calendar

(Continued from Page 1)
Angus Associations.

— 7:45 p.m. County junior leadership meeting at Farm Credit Bldg 411 West Roseville Rd, Lancaster
— 8 p.m. Soil and Water Conservation District Di-

USDA Surveys Local Effects Of Crop Insurance

Federal Crop Insurance payments help rural economies when crop failures lower farmers' incomes, according to a report issued by the U. S. Department of Agriculture.

The report by USDA's Economic Research Service looks at the effect of Federal Crop

payments for drought losses helped insured farmers avoid spending their savings. Payments also prevented the debt situation of insured farmers from deteriorating more than that of the financially better-off uninsured farmers, the study found.

FCIC-insured farmers generally had smaller incomes, in

payments for drought losses helped insured farmers avoid spending their savings. Payments also prevented the debt situation of insured farmers from deteriorating more than that of the financially better-off uninsured farmers, the study found.

FCIC-insured farmers generally had smaller incomes, in

payments for drought losses helped insured farmers avoid spending their savings. Payments also prevented the debt situation of insured farmers from deteriorating more than that of the financially better-off uninsured farmers, the study found.

FCIC-insured farmers generally had smaller incomes, in

payments for drought losses helped insured farmers avoid spending their savings. Payments also prevented the debt situation of insured farmers from deteriorating more than that of the financially better-off uninsured farmers, the study found.

FCIC-insured farmers generally had smaller incomes, in

payments for drought losses helped insured farmers avoid spending their savings. Payments also prevented the debt situation of insured farmers from deteriorating more than that of the financially better-off uninsured farmers, the study found.

FCIC-insured farmers generally had smaller incomes, in

payments for drought losses helped insured farmers avoid spending their savings. Payments also prevented the debt situation of insured farmers from deteriorating more than that of the financially better-off uninsured farmers, the study found.

FCIC-insured farmers generally had smaller incomes, in

payments for drought losses helped insured farmers avoid spending their savings. Payments also prevented the debt situation of insured farmers from deteriorating more than that of the financially better-off uninsured farmers, the study found.

FCIC-insured farmers generally had smaller incomes, in

payments for drought losses helped insured farmers avoid spending their savings. Payments also prevented the debt situation of insured farmers from deteriorating more than that of the financially better-off uninsured farmers, the study found.

FCIC-insured farmers generally had smaller incomes, in

payments for drought losses helped insured farmers avoid spending their savings. Payments also prevented the debt situation of insured farmers from deteriorating more than that of the financially better-off uninsured farmers, the study found.

FCIC-insured farmers generally had smaller incomes, in

payments for drought losses helped insured farmers avoid spending their savings. Payments also prevented the debt situation of insured farmers from deteriorating more than that of the financially better-off uninsured farmers, the study found.

FCIC-insured farmers generally had smaller incomes, in

payments for drought losses helped insured farmers avoid spending their savings. Payments also prevented the debt situation of insured farmers from deteriorating more than that of the financially better-off uninsured farmers, the study found.

FCIC-insured farmers generally had smaller incomes, in

payments for drought losses helped insured farmers avoid spending their savings. Payments also prevented the debt situation of insured farmers from deteriorating more than that of the financially better-off uninsured farmers, the study found.

FCIC-insured farmers generally had smaller incomes, in

payments for drought losses helped insured farmers avoid spending their savings. Payments also prevented the debt situation of insured farmers from deteriorating more than that of the financially better-off uninsured farmers, the study found.

FCIC-insured farmers generally had smaller incomes, in

payments for drought losses helped insured farmers avoid spending their savings. Payments also prevented the debt situation of insured farmers from deteriorating more than that of the financially better-off uninsured farmers, the study found.

FCIC-insured farmers generally had smaller incomes, in

payments for drought losses helped insured farmers avoid spending their savings. Payments also prevented the debt situation of insured farmers from deteriorating more than that of the financially better-off uninsured farmers, the study found.

FCIC-insured farmers generally had smaller incomes, in

payments for drought losses helped insured farmers avoid spending their savings. Payments also prevented the debt situation of insured farmers from deteriorating more than that of the financially better-off uninsured farmers, the study found.

FCIC-insured farmers generally had smaller incomes, in

payments for drought losses helped insured farmers avoid spending their savings. Payments also prevented the debt situation of insured farmers from deteriorating more than that of the financially better-off uninsured farmers, the study found.

FCIC-insured farmers generally had smaller incomes, in

insurance on farmers, on businesses that deal with farmers, and on local economies. It also assesses the impact of Federal Crop Insurance on other federal programs.

The report is based on a study of flue-cured tobacco growers in Virginia and wheat and barley farmers in Montana in 1963, a year of severe drought for both regions.

Federal Crop Insurance payments for drought losses helped insured farmers avoid spending their savings. Payments also prevented the debt situation of insured farmers from deteriorating more than that of the financially better-off uninsured farmers, the study found.

FCIC-insured farmers generally had smaller incomes, in

on fewer savings and more debts than uninsured farmers. Their farms were less diversified and lower yielding, according to the report.

Bankers and other lenders said that in comparable income situations, FCIC-insured growers repaid loans better than the uninsured growers. Lenders were more willing to carry delinquent loans and make new loans for insured borrowers.

Local businessmen, bankers, and tax collectors felt that Federal Crop Insurance payments bolstered local economies, according to the report.

USDA looks for a 2 percent increase in the spring tomato crop and 1 percent increase in early sweet corn

No Other Protein Need When You Feed



SPECIAL TANVILAC

Feeders Say . . .
"The Most Economical Feeding Plan of All"

No trouble with scours or cattle going off feed. You'll be more than satisfied with our feeding program for you'll get healthy stock, quick gains at low cost. Remember, there's a FEED LOT PROVEN TANVILAC CULTURE PRODUCT FOR EVERY FARM-FEEDING PURPOSE.

THE ONLY 1/2 LB. SPECIAL TANVILAC PER HEAD PER DAY WITH GRAIN AND MOUGHAGE — GET BIGGER PROFITS

FOR MORE PROFITS—MAIL COUPON
THE TANVILAC COMPANY, INC.
4th & Corning Ave., Box 26, Highland Park Station, Des Moines 13, Iowa

Also: Send Me Additional Information about Special Tanvilac.
I have _____ Cattle
NAME _____
ADDRESS _____



C. O. NOLT

LOCAL DISTRIBUTOR

BIRD-IN-HAND

Phone Lanc. 397-0751

PATZ
Sales & Service
Barn Cleaners - Silo Unloaders - Cattle Feeders
Robert K. Rohrer
Quarryville, R. D. 1
Hensel KI 8-2559

Why Wait?

FOR GREATER PROFITS

Install a De Laval Combine Milker® NOW

De Laval Combine Milkers are designed for the forward-looking dairyman who wants to milk fast and clean, save time and labor, and prevent injury and disease in his herd.

Let us show you how the De Laval Combine Milker outmilks and outperforms all other pipelines, and how easily you can own one.

HEADQUARTERS FOR THE COMPLETE LINE OF EASY-TO-PAY-FOR DE LAVAL EQUIPMENT

Landis Bros., Inc.
1305 Manheim Pike (1 Mile North of Lanc. on Rt. 72)
LANCASTER, PENNA. PH. 393-3906

Can a change of feed give you 10% more milk?

Yes! . . . according to dairymen who have changed to

FUL-O-PEP Cattle-izer DAIRY FEED

ANOTHER FINE PRODUCT OF THE QUAKER OATS CO.

Passmore Supply Co.
Cochranville, Pa.

Grubb Supply Co.
Elizabethtown

Millport Roller Mills
Millport

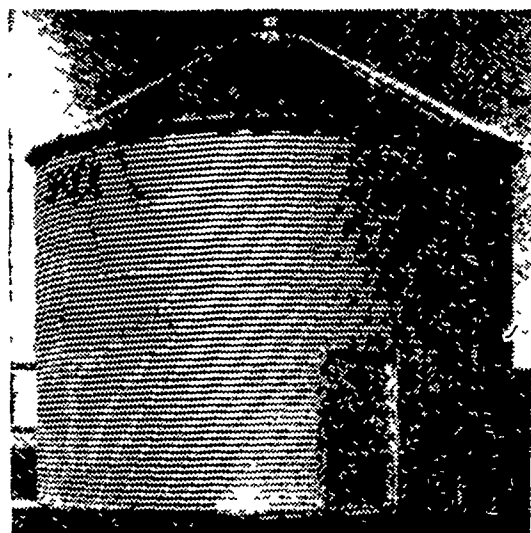
Kirkwood Feed & Grain
Kirkwood

S. H. Hiestand & Co., Inc.
Salunga

H. M. Stauffer & Sons, Inc.
Witmer

J. C. Walker & Son, Inc.
Gap, Penna.

Stevens Feed Mill, Inc.
Stevens, Penna.



BROCK

DUAL PURPOSE GRAIN BINS
For Grain Storage and Drying
Brock Quality Is Now In The Grain Bin Field

— 18 MODELS —
18 - 21 - 24 Foot Diameter Bins
Capacity From 2200 to 9500 Bushel

See Your Brock Grain Bin Dealer Now
Or Write For Literature

Distributors of quality poultry and hog equipment.

We sell, service, guarantee installation.
Beacon Steel Cages, Hart Cup Watering Systems, Brock Feed Bins and Grain Bins, Aerovent Ventilation, Oakes Mechanical Cage and Floor Feeders and Hog Equipment, Herrmatic Feed Carts, Egg and Manure Handling Equipment.

E. M. Herr Equipment, Inc.

"Pioneer of Laying Cages"
R. D. 1, Willow Street (Lancaster Co.) Pa.
717-394-0654