

● **Poultry**

(Continued from Page 1)

throne. She will be crowned by Lucy Jane Frye of Pineville, Bucks County, the current queen.

Poultry Queens represent the poultry industry of Pennsylvania in many ways, ac-

ording to Dr. T. S. Chang of Myerstown, chairman of the queen contest committee. The 1965-66 regent will appear at various functions, on television, and at organizations' meetings to tell the story of poultry and its importance to the economy of Penna.

A statewide chicken barbe-

cue is scheduled for August 28, according to the planners. In addition, the six-day event will include a bantam show, "educated" chickens, a display by the Pennsylvania Department of Agriculture, waterfowl and pond, and a wide range of poultry foods for the discriminating visitor.

● **Bob Fisher**

(Continued from Page 1)

been a 4-H member for seven years and has been active in various livestock projects. His local leaders are Elmer Senseng and Lester Weaver.

The tour is sponsored by the Pennsylvania Association of Soil and Water Conservation District Directors and the Sears Roebuck Foundation, in cooperation with Penn State Extension Service.

● **NFU**

(Continued from Page 1)

by the USDA. The majority of the dairymen in the area would be affected seriously by loss of the protection of their milk market, and would likely have to accept a less favorable order eventually if the present one is terminated, dairymen were told.

The speakers were Attorney Gilbert Malone, and Dwyte Wilson, NFU official. Both told the dairymen they favored the present handler pool for the Delaware milkshed, as opposed to the marketwide pool alternative used in some other areas.

Association president Fred Frey appointed a five-member delegation to form testimony for the chairman of the group to present at the hearing to be held in Philadelphia on June 8. Dwyte Wilson plans to accompany the group to the hearing, thus lending the support of the National Farmers Union.

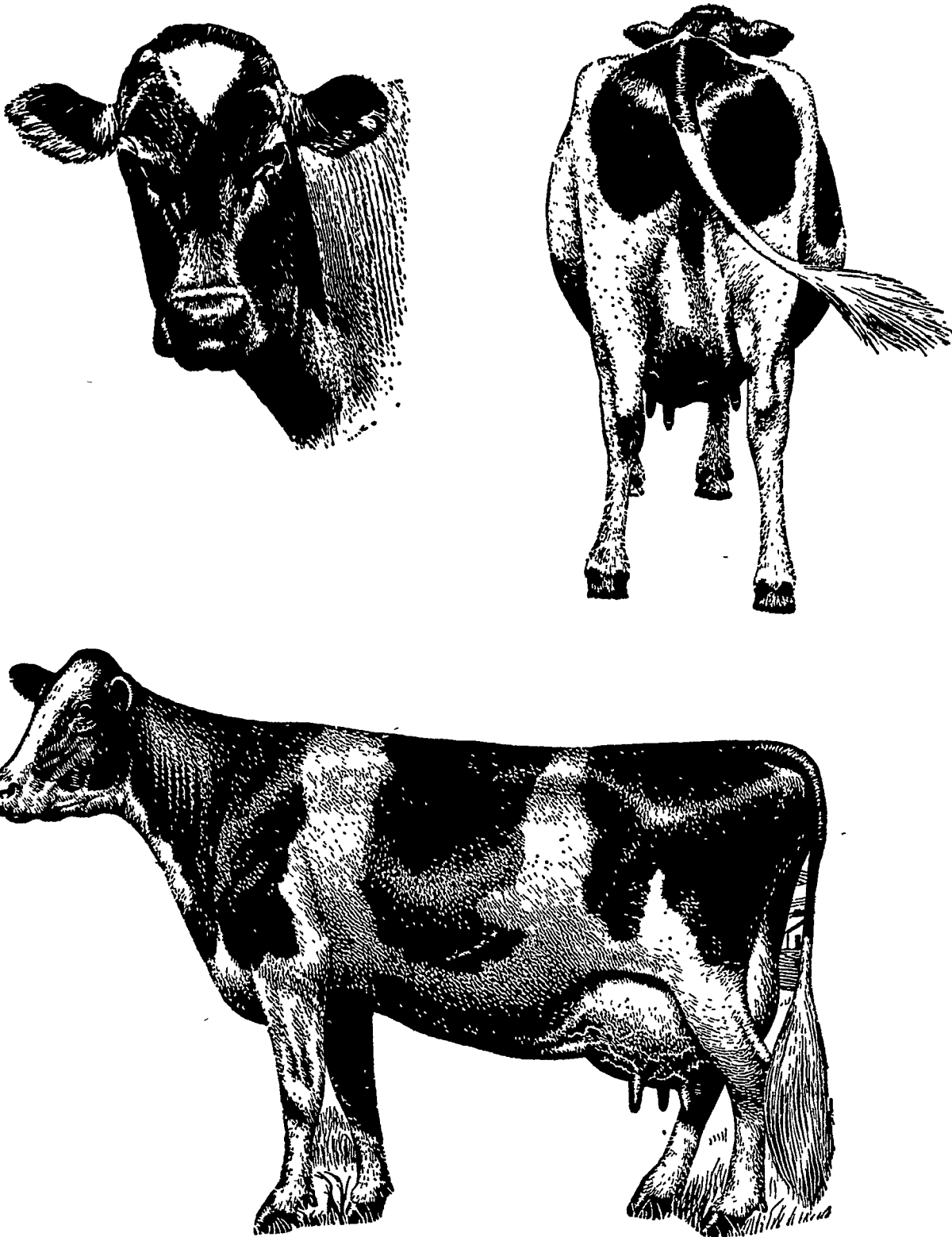
**Red Meat Production Down From Year Ago**

Seventy-nine million pounds of red meat were produced in the Commonwealth in April, 14 percent less than in the previous month and 9 percent below April production a year ago, according to the Pennsylvania Crop Reporting Service, State Agriculture Department.

Compared to March, beef and veal production in April was down 7 percent, pork down 14 percent, and lamb and mutton up 39 percent.

The January-April red meat production totaled 337.3 million pounds, about 1 percent less than in the comparable period last year. Total production in the nation for the same period was 2 percent less than a year earlier.

**ANYWAY YOU LOOK AT IT...**



**More Dairymen  
Are Feeding HORNCO  
Feed Than Ever Before!**



Hornco Uni-pel dairy feeds, formulated by D. H. Van Pelt could improve your dairy operation. Why not check with your neighbor who feeds Hornco. Then call us direct for an appointment with Mr. Van Pelt.

**D. E. Horn & Co., Inc.** York, Pa. Ph. 854-7867

**FOR  
TOBACCO  
PLANTS**

● **Hy Gro**

Plant starter to be used in transplanting as well as leaf feeding.

● **VHPF**

● **Streptomycin Spray**

● **Chlordane**

● **Ortho Gro**

Buy one for \$4.98 gal., get two for \$4.99

**Groff's Hardware**  
South Railroad Ave.  
New Holland, Pa.