

# Weekly Poultry Report

## Eastern Pennsylvania And New Jersey

### Live Hens

Limited supplies of light type hens were barely adequate for a fair, unaggressive demand. Anticipated increased supplies did not materialize despite the continued sluggish egg market. Prices held unchanged. Offerings of heavy type hens increased slightly, nevertheless, they continued short of full requirements. Several dealers expect supplies to increase in the very near future. Roasters cleared easily as most supplies on contractual growing arrangements. Prices paid at farms: Light type hens 6½-7c.

### Turkeys

One lot of heavy type hens 14# average moved at 30-31c. Offerings remain short of trade needs.

### Fogelsville

June 1, 1965

(Prices for dock weights, cents per lb. except where noted.)

Hens, light type 7-8½, 7-8; Hens, heavy type 12-24, 14½-

18; Pullets 25½-35, 32-35; Roasters 10-36½, 30½-35; Ducks 18½-21½; Turkeys, hens 28-35, 34-35; Rabbits, 41-65, 51-65; Guineas 57½-90; Pigeons (per pair) 35-92½, 55-70, Jumbo Squab 72½-75. Total coops sold: 498.

## Eastern Shore Exchange

### Weekly Summary

Broilers sold at the Eastern Shore Exchange this week averaged 16.95 cents per pound live weight. This average is based on a three-day market this week because of the holiday. Prices paid ranged from a low of 15.7 on Tuesday to a high of 17.7 cents on Thursday.

### Delmarva

June 4, 1965

Delmarva broilers and fryers live prices advanced slightly higher. Demand was fair for light auction offerings. Supplies of live birds over 3.75 to 4 pounds, barely adequate in every instance. Ready-to-cook demand fair.

Prices unchanged to ½ cent higher.

Estimated slaughter for Friday and Saturday, 905,000 head compared to 813,000 head last weekend.

In the 24 hours preceding market close on Friday, broilers and fryers live prices ranged from 16.1-17.7 on sales of 1,044,000 head.

### Chicago

(Continued from Page 2)

market supply 144,300 compared with 192,900 last week and 192,300 a year ago.

Compared with last week, slaughter steers were steady to 25 higher. Heifers steady to 50 higher. Cows steady to 25 higher and bulls sold 25-50 higher. In the carlot dressed meat trade, steer beef was 50-100 higher. Heifers beef steady to 50 higher and cow beef was generally steady. Slaughter steers again worked higher for the sixth consecutive week and steers and heifers have now been higher for eleven of the past twelve weeks. Demand was broad for all grades of steers and heifers early in the period but later the outlet for high choice and prime narrowed considerably. Cattle slaughter under federal inspection was expected to be substantially smaller than the previous week due to the Monday holiday. Receipts included about 75-80 percent steers and 10-12 percent heifers with bulk of the remainder cows. Overall finish of steers was somewhat better than the previous week with about 8 percent prime, and 65-70 percent choice. This compares with 10 percent prime and 70 percent choice a year ago. Average cost of steers this week was estimated at 27.50, compared with 26.87 last week and 20.29 a year ago. Average weight of steers was estimated at 1145 lbs com-

Lancaster Farming, Saturday, June 5, 1965—3

# Weekly New York Egg Mkt.

From Monday, May 31st to Friday, June 4th

	Mon.	Tues.	Wed.	Thurs.	Fri.
<b>WHITE</b>					
Ex Fcy Hywts.		30	30	30	30
Fcy. Hywts.		29	29	29	29
Fcy. Med.		24	24	22½-23	22½-23
No 1 Med.		24	24	22½-23	22½-23
Pullets		21	21	21	19-21
Peeweese		16	16	16	15
<b>BROWN</b>					
Ex. Fcy. Hywts.		32	32	32	32
Fcy. Hywts.		30½	30½	30½	30½
Fcy. Med.		25	25	25	23½
Pullets		23½	23½	21½-22	21½-22
Peeweese		16	16	16	15
<b>MIXED</b>					
Fcy. Hywts.		28½	28½	28½	28½
Standard		27	26-26½	26-27	26-27
Checks		22	22	22	22

TREND Market continues extremely unsettled and irregular with surplus supplies and a demand at a restricted rate.

Copyrighted 1964 By Urner-Barry Co.

pared with 1134 last week and 1177 lbs a year ago. Bulk of heifers were good and choice weighing 800-1100 lbs.

Slaughter steers. Loadlots Prime 1150-1350 lbs. 30 50-31 00, nine loads at latter price and highest since December 1962. High Choice and Prime 1150-1400 lbs. 29 25-30 50, Choice 1000-1375 lbs. 27 00-29 50, several loads mostly Choice 900-1000 lbs 26 50-28 00, loadlots Mixed Good and Choice 950-1350)? 26 00-27 25, Good 23 50-26 25, Standard and Low Good 21.00-23.75, few lots Utility and Standard 19 00-21 00.

Approximately one-fifth of the calcium in the skeleton is replaced each year. With dairy foods supplying more than three-fourths of the Nation's calcium needs, it is difficult for the body to obtain enough calcium unless dairy products are regularly included in the diet.

The four-leaf clover emblem of 4-H Clubs was developed in Iowa by O. H. Benson in 1911. Using Heart, Hands and Health to the best of one's ability is the foundation of 4-H.

Need . . .

## HAY - STRAW - EAR CORN

Buy Now and Save!

More and more farmers are buying from us for better value and all around satisfaction.

Delivered — any quantity

Phone Area Code 717 687-7631

**Esbenshade Turkey Farm**

Since 1890  
PARADISE, PA.

# Put All Your Corn in the Crib PLANT DEKALB



More Farmers Plant DEKALB Than Any Other Brand.

Depend on  
**DEKALB**

"DEKALB" is a Registered Brand Name

TOUGH years for corn are GREAT years to have DeKalb. Because DeKalb BREAK-THRU Hybrids are bred to stand the stresses of modern farming—thick planting and heavy fertilization . . . bred to stand, hold their ears and produce profitable yields. Next time, plant ALL DEKALB.

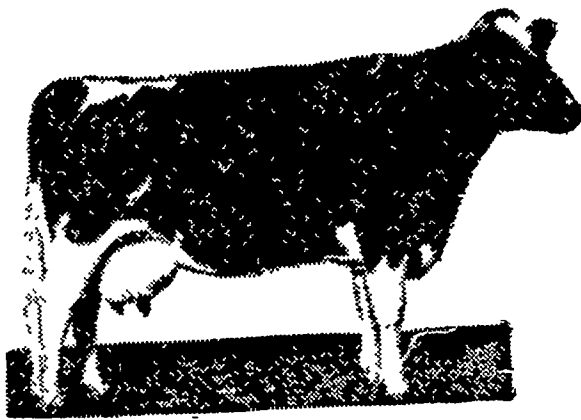


**P. L. ROHRER & BRO., INC.**

SMOKETOWN

Ph. Lanc. 397-3539

## Your Best Dairy Feed Buy



# WIRTHMORE Milk Parlor 16

The latest in dairy feeds for modern dairymen

- Handles like a pellet — looks like a dairy feed.
- Coarse textured — flake corn, crimped oats pellets
- High in energy — 76 therms



Paradise Supply

Paradise  
687-6292

J. K. Stauffer & Son

Lawn and Bellare  
605-3121 — 367-2321

## PATZ

Sales & Service

Barn Cleaners - Silo Unloaders - Cattle Feeders

**Robert K. Rohrer**

Quarryville, R. D. 1  
Hensel KI 8-2559

## ENIDE

### 50W

(diphenamid)

Superior Weed Control in Tobacco and Tomatoes. Gives full seasons control of many broadleaf weeds and certain grasses.

Contact Us For More Information

- Trade mark The Upjohn Brand of Diphenamid

**P. L. ROHRER & BRO., INC.**

SMOKETOWN  
Ph. Lanc. 397-3539