

# Weekly Poultry Report

**NOTE:** As part of a continuing effort to supply our readers with market reports that will be meaningful to their businesses we are replacing the Weekly Broiler Report with a Weekly Poultry Report, dropping the Pennsylvania Crop Reporting Service poultry placement report. You will continue to find the East-

ern Pa. and New Jersey, Fogelsville and Delmarva auctions reported on this page. In addition we are adding a weekly summary of the Eastern Shore Exchange showing a range of prices paid for broilers during the week, and the weekly average price. We invite your comments.

## EASTERN SHORE EXCHANGE

**Weekly Summary**  
Broilers sold at the Eastern Shore Exchange this week averaged 17.09 cents per pound, live weight. The range in prices paid during the week showed a low of 15.9 cents on Wednesday and a high of 19.2 on Monday.

## EASTERN PA. & N. J. Live Hens

Prices were steady on adequate offerings of light type hens. Processor interest just in. Trading on heavy type hens limited as dressed markets become inactive preceding long holiday weekend & processors discontinue purchases. However, supplies are adequate. Prices paid on farms: Light type hens 6-7¢; Heavy type hens, too few to report.

**Turkeys**  
Occasional sale of 15# feeder hen turkeys noted.

## FOGELSVILLE May 25, 1965

(Prices for dock weights, cents per lb, except where noted.)

Hens, light type 7-10, 7-8; Hens, heavy type 8½-25½, 17-22; Pullets 22½-36½, 29-33; Roasters 15-41, 25-36; Ducks 20-21; Turkeys, hens 25-34, 30-32½; Rabbits 35-54, 48-52; Guinea 65-82½, 82½; Pigeons (per pair) 45-82½, 75-82½; Jumbo Squab 75. Total coops sold: 687.

## Delmarva

Delmarva broilers and fryers live prices were ¼ cent higher with a good demand for heavy offerings.

Ready-to-cook demand slightly stronger ranging mostly fair, though good in instances. Fill-in business active, and interest for next week developed satisfactorily in most instances. Delivered prices mostly ½ cent lower though premium quality

## Lancaster

(Continued from Page 2)

**Bulls:** Choice 20 25-22 30, Individual 22 60-22 85, Good 20.50 21 50, Utility and Commercial 18 00-21.00.

**Feeder Steers:** Choice 850-970 lbs 26 25-27 25, Good 750-1020 lbs 24 25-25 00, Good 450 lbs Feeder steer calves \$24 50, Choice 400-500 lb. steer calves \$27 00-30.00.

**Calves 525:** Vealers steady, with previous weeks decline. Choice 32 00-35.00, Good 29.00-32 00, Standard 25 00-29.00, Utility 22 00-25.00.

**Hogs 1275:** Barrows, gilts and Sows steady; Except late sales 25-50 lower. US 1-2 190-250 lb. Barrows and gilts 23 00-23.50, US 1, 23.50 24.00 in early part of week. Mixed US 1-3 190-250 lbs. 22 25-22 75, Late sales 22 00 22 25. US 2-3 250-270 lbs. 21.25-22.00. Sows: US 1-3 300-600 lbs. 15 00-17.00.

**Sheep 300** All classes generally steady, except for some weakness on spring Slaughter lambs weighing under 70 lbs. Spring Slaughter Lambs: Choice and Prime 60-90 lbs. 28 00-31.00, Few to \$32.00, Utility to Good 40-70 lbs. 22 00-27 00, Utility to Choice Shorn Slaughter Ewes \$5 00-9.00.

ranged higher. In the 24 hours preceding market close, broilers and fryers live prices ranged from 16.0-17.8 on sales of 1,113,800 head.

# Weekly New York Egg Mkt.

From Monday, May 24th to Friday, May 28th

	Mon.	Tues.	Wed.	Thurs.	Fri.
<b>WHITE</b>					
Ex Fcy. Hywts	29	30	30	30	28½
Fcy Hywts.	29	29½	29½	29	29
Fcy. Med	24	24-25	25	24-24½	24
No. 1 Med.	24	24-25	25	24-24½	24
Pullets	20	21	21	21	21
Peeweese	15	15-16	16	16	16
<b>BROWN</b>					
Ex. Fcy. Hywts	30½	32	32	32	32
Fcy. Hywts.	29½	30½	30½	30½	30½
Fcy Med.	24	25	25	25	25
Pullets	22½	23½	23½	23½	23½
Peeweese	15	15-16	16	16	16
<b>MIXED</b>					
Fcy Hywts.	29	29½	29½	29	28-28½
Standards	27	27-27½	27½	27	27
Checks	23	23	23	23	23

**TREND:** Market unsettled with trading dull today in most quarters Business in resort areas picking up. Extra large and jumbos in very short supply.

Copyrighted 1964 By Urner-Barry Co.

## WATER - FOOD - SOIL FEED - FERTILIZER

Our Specialties!

LANCASTER LABORATORIES, INC.

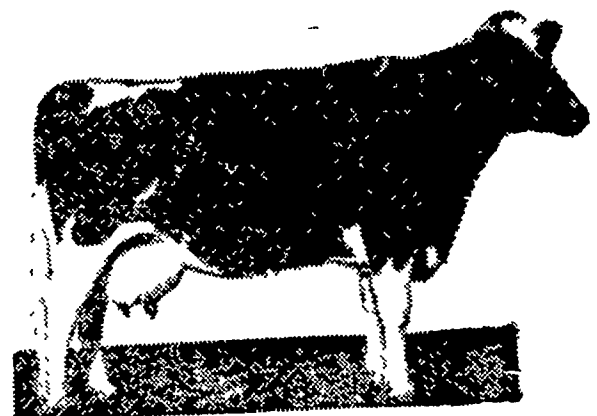
2425 New Holland Pike

Lanc., Pa.

PHONE 656-9043

E. H. Hess, Ph.D. — Director

## Your Best Dairy Feed Buy



# WIRTHMORE

## Hi-Cal Pellets

- Formulated & fortified for high production
- Molasses coated — highly palatable
- High in energy — 76 therms



Paradise Supply

J. K. Stauffer & Son

Paradise  
687-6292

Lawn and Bellaire  
665-3121 — 367-2321



## Tossed salad or tossed out?

**DITHANE M-22 SPECIAL WITH ZINC** protects your money crops

from blights and other diseases. The ingredients of a good tossed salad, unfortunately, are highly susceptible to such crop-robbing infections as leaf spots, rusts, anthracnose and downy mildew.

Fortunately, DITHANE M-22 SPECIAL with zinc stops the spread of trouble-causing fungi promptly—assuring disease-free crops which command top dollar market. Apply full cover spray every 7 days or so depending on intensity of infestation. DITHANE gives you full value for your crop-protection dollar. See your local dealer today for DITHANE M-22 SPECIAL with zinc.

**ROHM & HAAS**  
PHILADELPHIA, PA. 19105