

● Poultry Conference
(Continued from Page 1)

Poultry Producers Council (NEPICO), will stress the opportunity for selling quality products in the deficit poultry and egg area of the Northeast. The need for quality products will be affirmed by Charles B Degenstein of Weis Markets, Inc. Sunbury. "The Feed Industry is Rain to Go" will be presented by Donald W Paik of the Pennsylvania Millers and Feed Dealers Assoc. Ephrata.

A Penn State panel discussing "An Egg Program for Pennsylvania" will open the June 16 afternoon session. Covered will be cage systems for laying flocks, a new slant on the floor system of egg production, a lighting and feeding program for pullets and laying hens, a vaccination program production and marketing programs, and management and financial considerations.

Panel speakers will be Herbert C Jordon Glenn O Bressler John V Shutze, Robert F Gentry, Anthony P Stemberger, and Floyd W Hicks.

A former Pennsylvania poultryman and a graduate of Penn State Herbert S Sigel of the U S Department of Agriculture Southeastern Laboratory at Athens Georgia, will estimate the outlook for expanding egg production in the South. Donald Bell of Anaheim Calif. will describe

successful pullet rearing and egg production systems and the independent poultry producer's chances for success in the egg business of the future.

"Significant Egg Business Trends in the Midwest" will be the topic of Richard H. Forsythe, head of the department of poultry science at Iowa State University. "National Trends in the Feed Industry which Will Affect Pennsylvania Poultrymen" will be presented by Carl J Vosloh, Jr. agricultural economist with the U S Department of Agriculture.

Topics June 17 will include the relationship of stress to management and disease, costs of the poultry business, control of salmonella by produc-

ers and processors, use of pesticides and feed additives, and pending national legislation that should concern local poultrymen.

READ INSTRUCTIONS

Before you use a new appliance for the first time, read the instruction book, advises Helen Bell, Penn State extension home management specialist. The book will tell you how to handle the appliance and the care you will be expected to give it. You'll get better use from an appliance when you know how to use it correctly.

Stinging insects are more apt to attack a fast moving object because they are sensitive to air movements and sudden motion.



**New Feed to Balance Pasture . . .
BEACON PASTURE PEL-ETS**

**BOOST MILK PRODUCTION
. . . Hold Down Feed Cost!**

Here's a new feed to balance the nutrient content of Middle Atlantic and New England pastures. It's Beacon Pasture Pel-Ets — a 16% protein, 3.5% fat, 10% fiber ration in completely pelleted form.

Too many cows get a good boost in milk production but fall off in butterfat test on lush pasture, which is high in palatability but low in fiber. **To help avoid a drop in butterfat test, the fiber level in Beacon Pasture Pel-Ets has been set at 10%.**

Many cows, too, get their boost in milk production on pasture at the expense of body condition and lower milk production later in lactation. **Feed Beacon Pasture Pel-Ets to maintain body condition and to meet the energy needs of your cows — energy needs that can't be met by pasture alone.**

Beacon Pasture Pel-Ets are priced right, too. The formula takes maximum advantage of ingredient values that are greatest during the pasture season. The result is a feed that combines high nutritional value and low price.

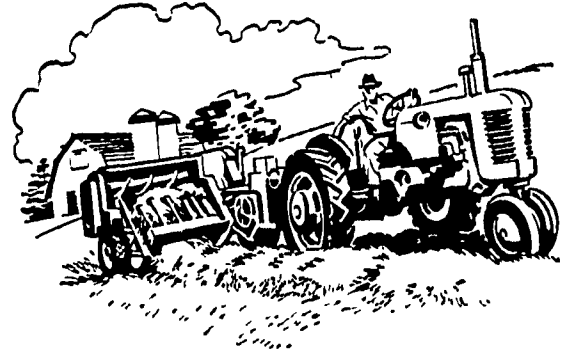
Call your Beacon dealer or Beacon Advisor today for prices on Beacon Pasture Pel-Ets, delivered to your farm.

- | | |
|--|--|
| BOMBERGER'S STORE
Elm | I. B. GRAYBILL & SON
Strasburg |
| FARMERS SUPPLY COMPANY
Lancaster | O. K. McCracken
Manheim |
| CLEM E. HOOBER
Intercourse | MILLPORT ROLLER MILLS
R #1, Lititz |
| GEHMAN'S FEED MILL
Denver | EARL SAUDER, INC.
New Holland |

**Beacon Division of Textron Inc.
YORK, PA.**



DON'T TAKE CHANCES



**Hay Quality Is Important
BALE HAY SOONER —
APPLY ISF HAY GUARD**

**HAY-GUARD — Locks in Nutritional Value:
Removes Danger of Heating and Molding
Improves Flavor of RAINED-ON-HAY.
(Fully protected under U.S. Patent - 3,184,314)
ISF - HAY GUARD — Should be applied with**

**Automatic Dispenser — (treat each bale)
(Installation provided)**

For prompt service: Contact Representative

C. W. CASSEL
P. O. Box 173
Manheim, Pa.
665-4510

R. H. MILLER
55 S. Grant St.
Manheim, Pa.
665-5213

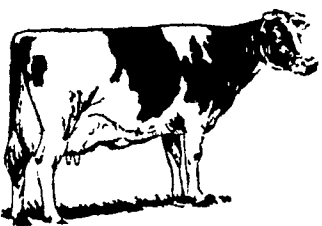
(Lancaster, Lebanon, Dauphin and Berks Co.)

International Stock Food Corp.

Waverly, New York

Since 1935 . . .
Your Dependable

**SALES
EVERY
TUESDAY**



**Follow the leader
CY R. KING Superbull**

**"Sire" of ABC Cows
with top production records**

**GRADE COWS
Develop**

**Pure Bred Quality
thru the one and only
Positive Mating Method**

**AMG
FREE BOOKLET**

**CY R. KING
super-bull
making
sire history
CALL OR WRITE**

ATLANTIC

**BREEDERS COOPERATIVE
Main office—Lancaster, Pa.**

- Lancaster 569-0411
- Christiana 593 5187
- Strasburg 687-6292
- Akron 859 2552
- Quarryville 786 7381
- Mount Joy 653-1451

**GREAT
TOBACCO
TRANSPLANT
FOOD**

**MILLER VHPF goes so far
does so much . . . on so little!**



This efficient way of feeding helps develop more roots . . . reduce wilting. Supplies all needed minerals. Gives plants a quicker start . . . sturdier growth . . . higher yield . . . better color. Dissolve 6 pounds of VHPF per 100 gallons water. At the rate of about 200 to 300 gallons of water per acre for transplanting, it takes only 12 to 18 pounds of Miller VHPF per acre to assure healthy, fast growing tobacco plants. Ask for Miller VHPF . . . the complete plant food.

**78c
3 lb.**

Miller Chemical and Fertilizer Corp.

Box 25, Ephrata Ph. 733-63

AVAILABLE AT THESE DEALERS

- | | |
|---|---|
| J. Wilbert Carper
2590 Harrisburg Pk., Lancaster
898-8983 | Organic Plant Food Co.
Grofftown Rd., Lancaster
392-4963 |
| Dutchman Feed Mills, Inc.
R. D. 1, Stevens, Pa.
733-3020 | P. L. Rohrer & Bro., Inc.
Smoketown 397-3539 |
| J. Mark Eshleman
R. D. 2, Lititz
665-4921 | L. Clyde Smith & Sons, Inc.
194 Greenfield Rd., Lancaster
392-8015 |
| Gehman Feed Mill, Inc.
Denver, Pa.
AC 215-267-5585 | L. M. Snavely
R. D. 1, Lititz
626-6256 |
| Lancaster Bone Fertilizer Co., Inc.
Plants - Quarryville & Oxford
786-2547 AC 215-932-8323 | J. K. Stauffer & Son
Lawn and Bellare
665-3121 367-2321 |