



COWS IN THESE COMFORT STALLS sure looked comfortable on the farm of J. Mowery Frey & Son. Frey uses rubber cow mats in all stalls, and told the touring dairymen that this has substantially reduced his bedding costs. L. F. Photo

● **Dairy Tour**

(Continued from Page 6)

in the parlor. He found this holds up the milk line. Even so, he said that two men can get all the milking done in about 90 minutes.

Raymond F. Witmer farm
The tour concluded with two visits to farms using "conventional" housing. The first of these was the Raymond F. Witmer farm at Willow Street R1. Witmer had the top-producing DHIA-tested, Guernsey herd in Penn-

sylvania last year. These high producers are housed in tie stalls.

In commenting on this type of housing, engineer Grout said that the stall barn is a long way from being out of the picture. Its efficiency can be greatly increased without basically changing its nature. For example, he said that a barn cleaner could easily be added to most barns. Pipeline milking is a possibility, as is some form of automat-

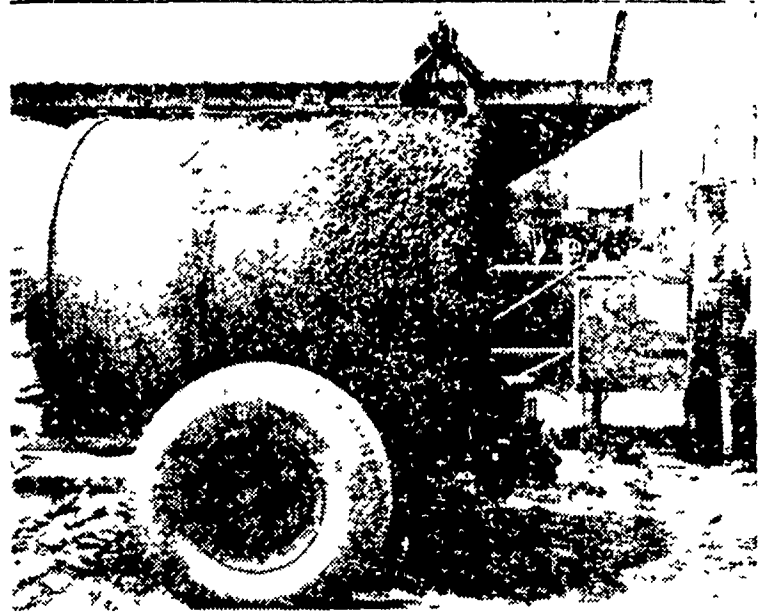
cows. "One real advantage," Grout said, "is that you can get more reasonable temperature control, with little variation." Witmer confirmed the latter, saying that his barn temperature seldom went below 50 degrees in winter.

One interesting feature at the Witmer farm was the manure handling system. His barn cleaner runs to a completely-enclosed manure shed which adjoins the barn. The unloader is elevated at about a 45 degree angle so that much of the liquid will drain back into a 10,000-gallon cistern instead of being conveyed to the field in the spreader. The only thing Witmer felt he would change about that set up if he were to do it over would be to locate the manure shed at the back instead of the side to eliminate the sharp turn the conveyor must now make.

J. Mowery Frey & Son farm

The final stop on the tour was at the farm of J. Mowery Frey & Son, Beaver Valley Pike, Lancaster. Here the group was shown another standard tie-stall set up. The 56-stall barn has been completed for about two years according to Frey. When they remodeled they included such features as pipeline milking, tile mangers, and rubber cow mats. In commenting on the pipeline principle, Frey pointed out that the barn

(Continued on Page 10)



LEON KREIDER DEMONSTRATES operation of the liquid manure handling system on his fully-automated dairy farm. The tractor-drawn tank above holds 800 gallons and is used to spread the liquid manure in the fields. It is filled several times a day from an 18,000-gallon underground holding tank. L. F. Photo

**Before you plant any
Hybrid Seed Corn...
talk to us about
ISOTOX 25
Seed Treater (F)**

Good hybrid seed corn is expensive, so it doesn't make sense to plant it without protecting it from insects and soil disease.

That's why we're telling our customers to use ISOTOX 25 Seed Treater (F). You mix it with the seed right in the planter box, and your corn seed goes into the soil with all-round protection. That's because ISOTOX is an insecticide and a fungicide. It works on insects like wireworms, seed corn maggots and seed corn beetles, and keeps off dry rot and damp-off.



ISOTOX is made for hybrids, and it's made so the right amount sticks on every seed. It runs just about 16c an acre to use this seed treater so why take a chance on losing any expensive seed, or having to replant later. See us for ISOTOX Seed Treater (F) now.

T M Reg U S Pat Off Ortho, Isotox, On All Chemicals
Read Directions and Cautions Before Use

**CORN GROWERS
All Weeds
AND
Grasses
Must
GO...**



Call your Agway man for his help in choosing for you the most appropriate chemical for your conditions.

- ATRAZINE** **KNOXWEED 42**
- WEEDKILLER "66"** **LV-4**
- LOROX**

FARMERS FEED & SUPPLY
New Holland, Pa.

QUARRYVILLE AGWAY STORE
Church St., Quarryville, Pa.



HENRY B. HOOVER
Ephrata, Pa.

ENOS R. BUCKWALTER
2281 Old Phila. Pike

WILSON M. SCOTT
Willow Street R1

MAURICE M. GOOD
Gordonville R1

SOLD BY

P. L. ROHRER & BRO., INC.

SMOKETOWN

Phone Lanc. 397-3539