

Weekly Broiler Report

BROILER PLACEMENTS DOWN 6 PERCENT

Placements of broiler chicks in the Commonwealth during the week ending May 8, totaled 909,000, according to the Pennsylvania Crop Reporting Service. The placements declined 6 percent from the previous week but advanced 28 percent from a year earlier. Settings for broiler chicks totaling 1,351,000 decreased 14 percent from the previous week but were 19 percent above a year ago. The current 3-week total of eggs set increased 14 percent from a year earlier. Inshipments of broiler-type chicks during the past 10 weeks totaled 932,000 or 95 percent above the comparable period in 1964. Outshipments (2,162,000) were 64 percent above the comparable period a year earlier.

Placements in the 23 major-producing states totaling 50,213,000 increased 1 percent from the previous week and 10 percent from a year earlier. The 10-week total increased 6 percent from last

year. Settings of 66,582,000 declined 1 percent from the previous week but was 8 percent above a year earlier. The 3-week total increased 7 percent from a year ago. Eastern P.A. & N.J. (live hens)

Light type hens held unchanged piecewise as limited supplies ranged barely adequate to short of a fair, unaggressive demand. A scarce local supply of heavy type hens forced processors to increase purchasing from outside the area. A continued good movement of roasters was noted, especially the larger sizes. Prices paid producers at farm: Light type hens 6-7 1/4 mostly 6 1/2-7c. Heavy Type hens too few sales to report prices. Turkeys — Local supplies light with an occasional load of light type hens, 10# average, purchased at 28c. A small quantity of hens and toms averaging 12# brought 30c.

Fogelsville, May 11, 1965

Hens, light type 6 1/2-8; Hens, heavy type 10-31 1/2, 25-31; Pullets 32-40; Roasters 25

(Continued on Page 10)

● Delmarva

Delmarva broiler and fryer live prices increased approximately 1/4 cent. Demand good for moderate auction offerings. Average live weight declined in instances.

Ready-to-cook trading fair; some price resistance noted on asking prices over 27 cents.

Delivered prices were unchanged to 3/4 cents higher. Estimated slaughter for Friday and Saturday, 841,300 head compared to 973,000 head last weekend.

Prices paid and reported purchases for the 24-hour period ending 10:30 a.m. Friday; broilers and fryers, 160-169; 901,700 head, including 429,500 head offered and sold at Eastern Poultry Growers Exchange Thursday.

Twenty-seven percent of the broilers sold for 160-164 cents per pound.

The Delmarva broiler-feed ratio for the week ending 5/7/65 was 2.8, down 1 point from the preceding week. The average mash price was \$104.87 per ton, and the average broiler price was 14.79 cents per pound.

Weekly New York Egg Mkt.

From Monday, May 10th to Friday, May 14th

	Mon.	Tues.	Wed.	Thur.	Fri.
WHITE					
Ex. Fcy Hywts	29 1/2-30	29 1/2 30	29	29	29
Fcy Hywts.	29 1/2	29 1/2	29	29	29
Fcy Med	27	25 1/2	25	24	23 1/2-24
No 1 Med	26	25 1/2	25	24	23 1/2-24
Pullets	23	23	22 1/2	21	19
Peewees	20 1/2	20 1/2	20	18	16
BROWN					
Ex Fcy. Hywts.	35 1/2	35 1/2	34 1/2	33	31 1/2
Fcy. Hywts.	33	33	32 1/2	30	29 1/2
Fcy. Med.	31	28	28	26 1/2	25
Pullets	26 1/2	24	24	21 1/2	19
Peewees	20 1/2	20 1/2	20	18	16
MIXED					
Fcy Hywts.	29	29	29	29	29
Standards	28	27	27	27	27
Checks	23	23	23	23	22 1/2-23

TREND: Market highly unsettled and irregular with considerable surplus supplies of all sizes and grades, buyers inclined to hold off.

Copyrighted 1964 By Urner-Barry Co.

● Chicago

(Continued from Page 2)

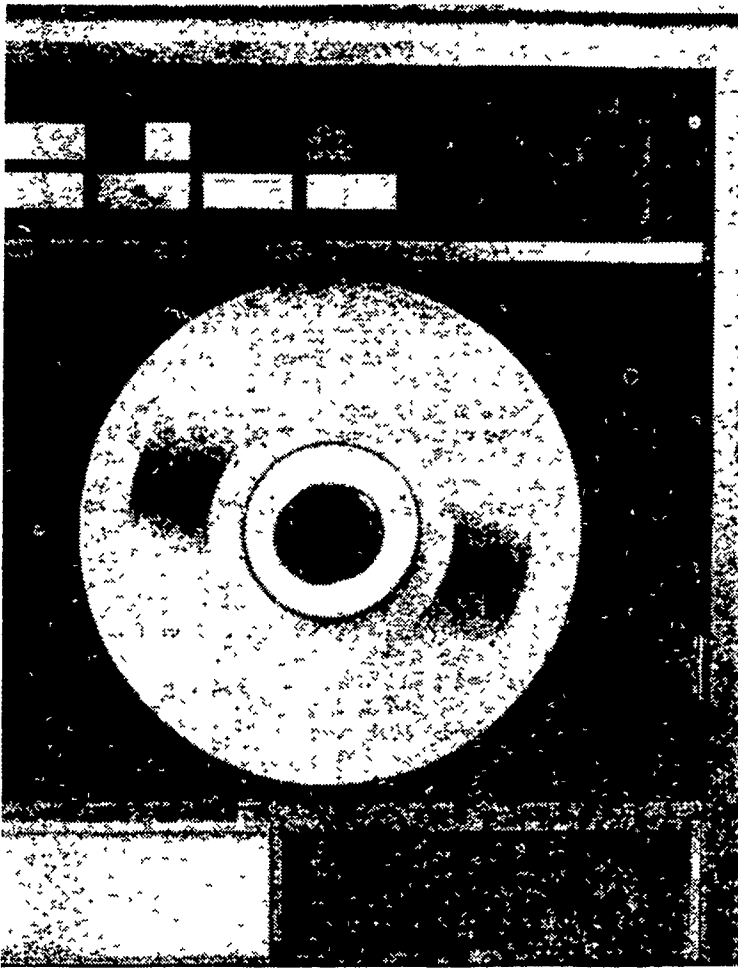
beef was 50 higher and cow beef sold 50 to mostly 100 higher.

Receipts 22,800 compared with 26,250 last week and 22,200 a year ago. Twelve market supply 168,100 compared with 185,650 last week and 192,400 a year ago.

Slaughter steers: Loadlots Prime 1165-1400 lbs. 29 00-29 25, load Prime 1335 lbs 29.50

on Monday, highest price since January 1963. High Choice and Prime 1150-1400 lbs. 28 00-29 00 load High Choice and Prime 1125 lbs 28 00, Choice 1000-1400 lbs 26 00-28 00, mostly 26 50-28 00 late, several loads Choice 900-1000 lbs 25 25-25.75, loadlots Mixed Good and Choice 950-1300 lb 24 75-26 00, Good 22 50-24 75, Standard and Low Good 19 50-22 75

Bulls Utility and Commercial 16 00-18 75
Feeders Load Choice 860 lbs steers 22 60.



the new Agway:

the IBM 1401-16K that helps create profit-conscious feeds

There are thousands of combinations of ingredients that can be chosen to formulate Agway Lay-Bits.

From these possibilities, the 1401-16K computer picks the one combination that matches every Agway nutritional standard at lowest total cost. It does this in 12 minutes. (A mathematician with a slide rule would take two weeks to come up with this answer.)

The result? The least-cost formula for Lay-Bits. Another "profit-conscious" Agway ration, Lay-Bits and all other computer-based Agway feeds give your birds the nutrition they need to produce the highest-profit for you.

Here is how it works. Agway nutritionists set rigid nutritional standards for all formulations. Each formula is a balance of amino acids, carbohydrates, energy and all the other nutritional elements to stimulate high production.

These flexible formulas are fed into the computer. As the market fluctuates, the computer selects a combination of ingredients that meets or exceeds the nutritional standards. From among thousands of possibilities, it determines the one that will give the poultryman the best egg-producing value, at the lowest price.

Agway Bits are also Fax-

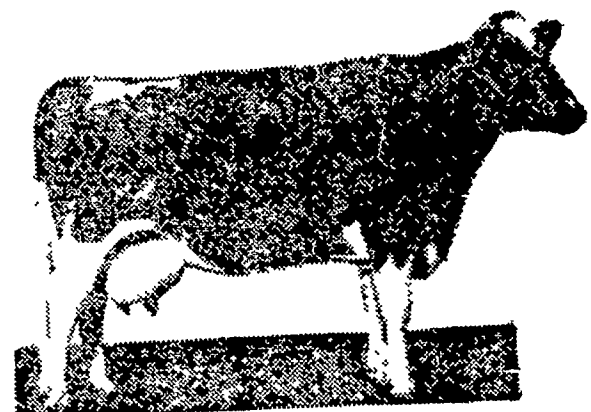
formulated. All Bits rations have the *feed additive extras* that help your birds maintain high interior quality, high shell quality... a higher percent of Grade A's and more profits.

Agway Bits...the computer-based, FAX-formulated rations for higher profits on-the-floor or in-the-cage, for small flocks or large. Order your choice of the Agway Bits family today — Gro-Bits, Lay-Bits, Cage-Bits or Bre-Bits... the *profit-conscious* feeds Agway Inc., Syracuse, N.Y.



POULTRY FEEDS & SERVICES

Your Best Dairy Feed Buy



WIRTHMORE Hi-Cal Pellets

- Formulated & fortified for high production
- Molasses coated — highly palatable
- High in energy — 76 therms



Paradise Supply

Paradise 687-6292

J. K. Stauffer & Son

Lawn and Bellaire 665-3121 — 367-2321