

## 4-H Club News

**PENN MANOR CLUB MEETS**  
by Sandra Stehman, reporter

The Penn Manor 4-H Club met on Tuesday evening at the Ann Letort School.

Mrs. Doris Thomas spoke to the group on courtesy and personality.

Richard Warfel and Linda Porter were elected county council representatives.

## BOOTS & SADDLES CLUB VISITS QUARTER HORSE FARM

by Darlene Neff, reporter  
The 4-H Boots and Saddles Horse and Pony Club went to Willowbrook Farm in Cata-saugua. They were taken on a guided tour of this quarter horse farm. Cutting and reining demonstrations were also given for the Club.

The next meeting of the Club will be Friday, May 14, at the Columbia Riding Club, 18th and Manor Streets, Columbia.

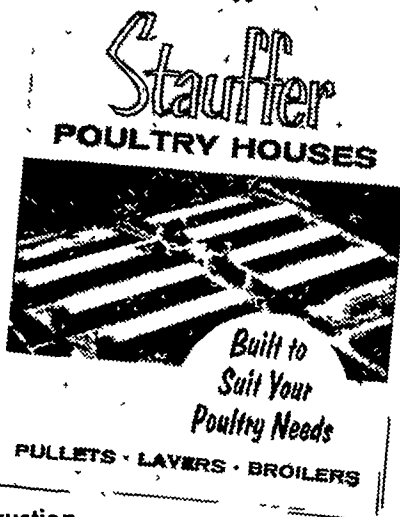
## Poultrymen!

**HERE'S THE MOST PROFITABLE FIVE MINUTES' READING YOU MAY SPEND IN A LONG TIME...**

Read About Economical, Efficient **STAUFFER**

### POULTRY HOUSES

- Strong 4-Foot Truss and Pole Spacing
- Ribbed Aluminum Construction
- Health-Protecting Insulation and Ventilation



SEND FOR IT... IT'S FREE

**H. M. STAUFFER & SONS, INC.**  
Poultry House Division • Leola, Pa.

Gentlemen: Please send my free copy of your new booklet on STAUFFER Poultry Houses.

Name \_\_\_\_\_  
Address \_\_\_\_\_  
R. D. No. \_\_\_\_\_

## Invitation To A Business Man

Every egg producer knows that the modern commercial egg operation is a business — a pretty big business. Matter of fact, few townfolk would guess how big. Chances are, your operation is bigger than many of the farm businesses around you . . . bigger from the standpoint of demands on your effort and ability . . . bigger on the basis of dollar volume.

You handle money — large amounts of it. You have an important responsibility to your customers to maintain for them a constant supply of eggs. You must work tirelessly for top egg quality. You must see to it that you have a dependable supply of good flock replacements. All these considerations — and more — must be your daily concerns, if you are to manage for profit.

As your RED COMB dealer, we can furnish you with the latest scientific and technological information — help you apply it to your operation. We can launch you on a RED COMB feeding program that's exactly suited to the needs of your business.

Why not stop in soon and talk it over? Let us help you develop an all-around management-for-profit program that can put more dollars in your pocket!

**GOOD'S FEED MILL**  
New Providence



## Lancaster

(Continued from Page 2)

Lot Good and Choice 725 lbs. \$23.00.

Calves 440: Vealers slow, mostly steady, with last weeks decline. Good and Choice 27.00-32.00, Few High Choice

32.00-35.00, Standard 23.00-27.00, Utility 21.00-24.00, Cull mainly 18.00-21.00.

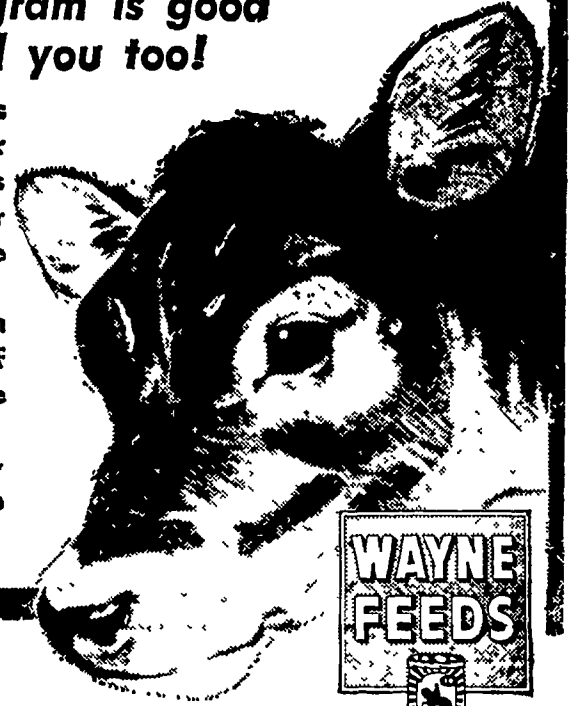
Hogs 1173: Barrows and gilts opened the week mostly 50c higher, closing \$1.00-1.50 higher. Sows fully steady. Barrows and gilts: US 1-2 190-250 lbs. 20.00-21.50, Late sales \$21.00-21.50, after Mon-

day's sales of US 1, at 20.25-20.75, US 1-3 190-250 lbs. 19.50-20.00, US 2-3 240-270 lbs. 19.50-20.00,

Sows: US 1-3 300-450 lbs. 13.50-14.50, Few US 1-2 14.50-15.00, US 2-3 400-550 lbs. 13.00-14.00.

## Why a Wayne Calf Program is good for your calves . . . and you too!

Calves develop into sleek, growthy heifers that develop into herd replacement stock early. The Wayne Calf Program gets calves on dry feed fast with no growth lag after weaning. Lets you sell more milk along the way and cuts your calf raising costs. You develop these rugged heifers with roughage and a complete Wayne calf ration or you can use Wayne concentrate and your own grain. Stop in soon and discuss the results dairy-men in this area have achieved with the Wayne Calf Program.



**H. M. STAUFFER & SONS, INC.**  
Witmer

**DUTCHMAN FEED MILLS, INC.**  
R. D. 1, Stevens

**POWL'S FEED SERVICE**  
R. D. 1, Quarryville  
R. D. 2, Peach Bottom

**C. E. SAUDER & SONS**  
R. D. 1, East Earl

**GRUBB SUPPLY CO.**  
Elizabethtown

**MOUNTVILLE FEED SERVICE**  
R. D. 2, Columbia

**J. K. STAUFFER & SON**  
Lawn and Bellaire

**MILLERSVILLE SUPPLY CO.**  
Millersville

**ROHRER'S MILL**  
R. D. 1, Ronks



**HERSHEY BROS.**  
Reinholds



## Now... two sizes

John Deere Rotary Choppers

Yes, sir, John Deere Rotary Choppers now come in two sizes. There's the 5-foot 15-A for average-acreage growers . . . and the 6-foot 16-A for large-acreage growers.

The rugged 15-A and 16-A are just the ticket for mechanical pasturing, chopping standing hay for silage, shredding brush and stalks, clipping pastures and handling many other jobs around the farm.

See us soon for full details.

**Wenger Implement Co.**  
Buck BU 4-4467

**Alan Beyer**  
Christiana LY 3-5687

**H. S. Newcomer & Son**  
Mt. Joy 653-3361

**A. B. C. Groff, Inc.**  
New Holland 354-8001

**Sholtzberger's**  
Elm 665-2141

**Landis Bros. Inc.**  
Lancaster 393-3906



**M. S. Yearsley & Sons**  
West Chester 696-2990