

Weekly Broiler Report

BROILER PLACEMENTS STEADY

Placements of broiler chicks in the commonwealth during the week ending April 24, totaled 958,000, according to the Pennsylvania Crop Reporting Service. The placements remained about the same as the previous week, but were 32 percent above a year ago. Settings for broiler chicks totaling 1,268,000 declined 14 percent from the previous week but were 2 percent above a year ago. The current 3-week total of eggs set increased 26 percent from last year. In shipments of broiler-type chicks during the past 10 weeks totaled 840,000 or 126 percent above the comparable period in 1964. Outshipments totaled (2,152,000) were 56 percent above the comparable period a year earlier.

Placements in the 23 major-producing states totaling 48,811,000 remained about the same as the previous week but were 7 percent above a year earlier. The 10 week total increased 5 percent from last year. Settings of 66,203,000 were down 1 percent from the previous week but 6 percent above a year ago. The 3 week total increased 7 percent from a year ago.

Fogelsville
April 27, 1965

Hens, light type 6-8, 6½-7, Hens, heavy type 12½-26½, 16-22½; Pullets 17½-32, 28-31; Roasters 18-35, 28-34, Turkeys, hens 38, Turkeys, toms

21-22½; Rabbits 36-57, 48-54; Guineas 67½-72½; Pigeons (per pair) 75-1.15, 75-80, Jumbo Squab 85; Totals coops sold 599

Eastern Pa. & N.J. (live hens)

Prices on light type hens held unchanged. Although supplies increased occasionally, in most instances they were light & sometimes short of the fair demand. A few buyers felt that producers were holding flocks in view of the favorable shell egg market. A generally good demand for heavy type hens exceeded lighter available supplies. Purchases continued from points in New England as well as the South. Roasters remained short of needs, especially those sizes 7# & over. Prices paid at farms: Light type hens 6-7¼ mostly 6½-7c, heavy type hens 17-18 mostly 17c. Turkeys—Supplies scarce. Inquiry good. No trading to report.

Chicago

(Continued from Page 2)

weakness resulting from the increase. Local supply largest in five weeks and twelve market total largest in six weeks, twelve market total up considerably from the past several weeks as labor disputes have been settled. Local supply 70-75 percent slaughter steers, 12-15 percent heifers, balance cows. Overall finish of steers no better than last week when there was less than 7 percent Prime, the smallest percentage of Prime for any week since July, 1962 around 63 percent. Choice, balance mostly Good, this compares with nearly 9

Delmarva

Delmarva broiler and fryer live prices declined more than ¼ cent. Demand was only fair for heavy auction offerings.

Ready-to-cook demand was spotty, ranging from slow to fairly good in instances. Light feature activity noted for next week at competitive prices.

Delivered prices were generally ¼ cent lower.

Estimated slaughter for Friday and Saturday, 870,000 head, compared with 852,000 head last weekend.

Prices paid and reported purchases for the 24-hour period ending 10:30 a.m. Friday broilers and fryers, 140-154, 1,186,800 head, including 448,300 head purchased of 509,200 head offered at Eastern Poultry Growers Exchange, Thursday.

Nineteen percent of broilers and fryers sold for 145-148 cents per pound.

The Delmarva broiler-feed ratio for the week ending 4/23/65 was 2.9, the same as the preceding week. The average mash price was \$103.51, and the average broiler price was 15.13 cents per pound.

percent Prime last year and 71 percent Choice. Average weight of steers little changed from last weeks 1141 lbs but well below the 1173 lbs a year ago. Average cost of steers this week estimated at 25.25, highest since last October and compares with 25.12 last week and 20.62 a year ago. Heifer supply was mostly Good to High Choice weighing 850-1050 lbs. Slaughter steers Loadlots Prime 1200-1325 lbs 28.00-28.50,

Weekly New York Egg Mkt.

From Monday, April 26th to Friday, April 30th

	Mon.	Tues.	Wed.	Thur.	Fri.
WHITE					
Ex. Fcy. Hywts.	33½	33½	33½	33½	32
Fcy Hywts.	32	32	32	32	31½
Fcy Med.	29	28½-29	28½-29	26½-26¾	26¾
No. 1 Med	28	28	28	26½	26½
Pullets	23	23	22-22½	24	24
Peewees	20	21½	21½	21½	21½
BROWN					
Ex. Fcy Hywts	34-34½	35-35½	35-35½	35-35½	35-35½
Fcy. Hywts	33	33	33	33	33
Fcy Med	28	29	30	31	31
Pullets	24	24	26	27	27
Peewees	20	21½	21½	21½	21½
MIXED					
Fcy Hywts	32	32	32	32	31
Standards	30½	31	31	31	30½
Checks	23½	23½	23½	23½	23½

TREND Up quality in surplus and freely offered. Balance about steady.

Copyrighted 1964 By Urner-Barry Co.

only two loads at 28.50 the top a year ago this week was 22.50. High Choice and Prime 1150-1400 lbs 27.00-28.00, load 1450 lbs 27.00, Choice 1150-1400 lbs 25.00-27.00, late Bulk 25.50-26.50, Choice 1000-1150 lbs 24.50-26.00, late 25.00-26.00, couple loads Choice 1625 lbs 24.10-24.25, loadlots Mixed Good and Choice 900-1300 lbs 24.00-24.75, Good 21.50-23.75, Standard and Low Good 18.50-21.00.

Cows Utility and Commercial closed 13.00-14.75, Canner and Cutter 11.50-14.00, mostly 12.00-13.50. Bulls Utility and Commercial closed 16.00-19.00.

Slaughter heifers High Feeders Couple lots Choice Choice and Prime 900-1100 lbs around 900 lb steers 22.50-25.25-50 few head Prime late 23.00, Good 775 lbs 20.75



FARM BUREAU'S

MOST COMPLETE LINE



OF PETROLEUM PRODUCTS IN TOWN!

Gasoline — Fuel Oil — Diesel Fuel
Kerosene — Oil & Grease

PLUS

ALL KINDS OF PETROLEUM EQUIPMENT (Underground & Elevated Tanks and Pumps)
HOME & INDUSTRIAL BURNER SERVICE AVAILABLE

— WE SERVE —

FARMERS — NON FARMERS
CHURCHES — SCHOOLS — INDUSTRY
(Transport Load Deliveries)

ASK ABOUT OUR VOLUME DISCOUNTS

FARM BUREAU'S SPRING '65
TIRE - BATTERY & ACCESSORY SALE

Now Until May 31st

For Complete Details Ask Your Petroleum Driver Salesman
Or Call Us Collect If There Is A Toll Charge

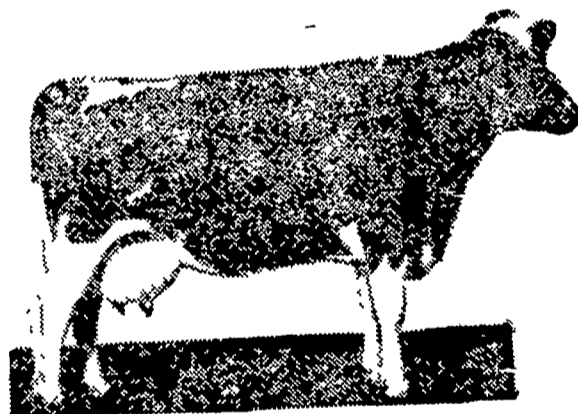
FOR FAST, FRIENDLY DELIVERY CALL

LANCASTER COUNTY FARM BUREAU

Lancaster 394-0541 New Holland 354-2146 Quarryville 786-2126

"ANYONE MAY BUY FROM FARM BUREAU"

Your Best Dairy Feed Buy



WIRTHMORE

Hi-Cal Pellets

- Formulated & fortified for high production
- Molasses coated — highly palatable
- High in energy — 76 therms



Paradise Supply J. K. Stauffer & Son

Paradise
687-6292

Lawn and Bellaire
665-3121 — 367-2321