

**MANHEIM YFA HOLDS ANNUAL BANQUET**

The Manheim Young Farmer Association Chapter held their annual banquet at the Penryn Fire Hall with 126 in attendance.

The program got under way with the Invocation given by N. J. Fuhrman, principal of Manheim Central High School. Introducing the guests was the Young Farmer president, Paul Kline. Jess Erway, teacher of agriculture, introduced the following officers: Paul Kline, president; Eugene Hoover, vicepresident; Donald Hershey, secretary; David Landis, treasurer; Glenn Brubaker, public relations; Executive Committee, James Graybill, Vincent Becker, Jesse Balmer, Isaac Geib.

The guest speaker, T. Dean Witmer, Assistant Director of Vocational Agriculture Education from the State Department of Agriculture, presented the outlook for agriculture, and the need for more specialized training of the young farmers in our nation to meet the needs of an expanding population.

Present from the State Young Farmer's Association was Mark Diehl and wife from Hollidaysburg. He extended greetings and presented the Southern District Outstanding Young Farmer award to Donald Hershey.

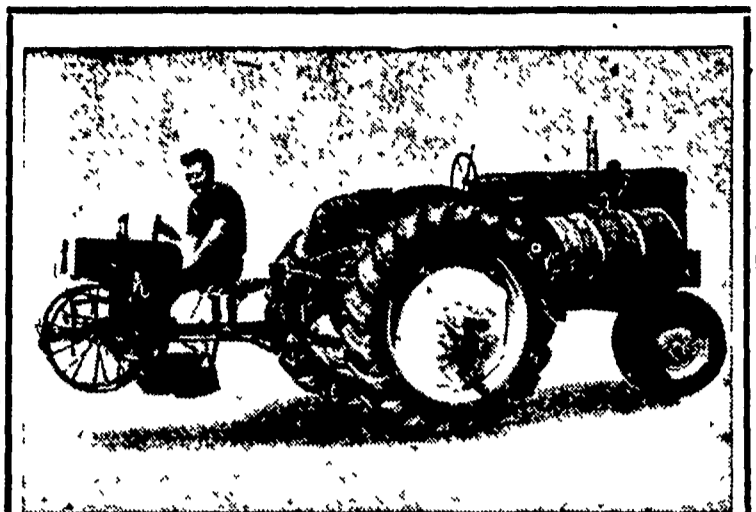
Forney Longenecker, Public Relations Chairman of the State Young Farmers' Association, outlined the progress being made in the Association.

The program of work for 1965 was presented by Donald Hershey.

Awards for the local corn growing contest were given by Eugene Hoover to Paul Kline, 1st place; Vincent Becker, 2nd, Isaac Geib, 3rd. The awards were donated by Bill Brubaker from the Organic Plant Food company. Recognition certificates were given to Forney Longenecker, James Graybill, Donald Hershey, Daniel Hershey, Jay Rohrer, Jay Foreman, Jerry Snavely, Glenn Brubaker, and Daniel Rohrer. Certificates were given to those attending all of the meetings of the Livestock Marketing Course. They were Forney Longenecker, Paul Kline, Vincent Beck-

er, and Harold Esbenshade. Entertainment for the Young Farmer's and their

logue presented by Mrs. Noah Fuhrman. Ending the program was Regiel, the magician.



SEE THE GENUINE

**MECHANICAL TRANSPLANTER**

HORSE DRAWN OR TRACTOR MODELS

With All The Features The Farmer Wants and Buys

SOLD AND SERVICED BY

**LESTER A. SINGER**

RONKS, PA.

Phone Strasburg 687-6712

**AGRICO FERTILIZER**

**SAVE MONEY ON BULK**

We furnish the spreader, you do the spreading. Try our liquid nitrogen service. Top dressing and plow down. Also Atrazine applied with Nitrogen solution.

Now is the time to use AGRINITE for tobacco beds.

See your Agrico Dealer or contact Agrico Warehouse, East Petersburg 569-2361.



**Commercial**



**Residential**



**Farm**



**Industrial**

**LENGTHEN YOUR OUTDOOR LIFE WITH REDDY LITE**

for only **\$4.00** a month

Including fixture installation, electricity and full maintenance

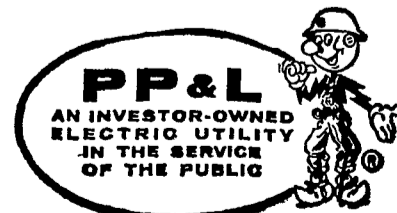
**OVER 17,000 ALREADY IN USE!**

Here are some excellent locations for REDDY LITE SERVICE

- |                 |           |                |              |              |                 |
|-----------------|-----------|----------------|--------------|--------------|-----------------|
| Alleys          | Churches  | Farm buildings | Hospitals    | Patios       | Private streets |
| Auto sales lots | Drive-ins | Garages        | Lumber yards | Picnic areas | Schools         |
| Clubs           | Driveways | Gardens        | Parking lots | Pools        | Yards           |

or wherever you need better outdoor lighting!

Solve that outdoor lighting problem with the brightness of a 6650-lumen, color-improved, Mercury-vapor lamp that automatically goes on at dusk, off at dawn. PP&L will install a Reddy Lite Service fixture on any location within 150 feet of an existing secondary pole accessible to PP&L service vehicles, and where right-of-way is furnished. You can install any number at the low cost of \$4.00 per month each. Call your nearest PP&L office today.



**Greater Calcium Needs Seen For Layers With Early Sexual Maturity**

Recent research work has shown that calcium retention and pullet skeletal health are closely related to cage layer fatigue, brittle bones and poor eggshell quality, according to the Oyster Shell Institute.

Taylor and Morris, working at an English University, found that pullets which matured early were unable to retain adequate calcium in their bodies, and were less able to balance their calcium intake and output than were birds whose production was retarded. This was determined by weighing and studying skeletons from both groups.

When the maturity of pullets under test was retarded, the skeletal loss of weight after being in production five or six weeks was only 6 percent. The early maturing birds at this same stage of production had a skeletal loss of weight of 26 percent!

The increased withdrawal of calcium from the skeletons of the early maturing birds left the major bones weak and brittle, especially in the breast.

(Continued on Page 18)