

# YOUR LEGISLATOR'S REPORT



**Senator Richard A. Snyder**  
State Senator  
13th District

Schools, highways, and welfare — these are the three areas in which the state spends the greatest amount of your tax dollars.

Each school district receives substantial amounts of school subsidies, largely to aid in paying teachers' salaries. In addition the state supports fourteen state colleges, such as Millersville, gives millions to Penn State and several other colleges, and maintains Stevens Trade School.



The state highway system is unusually large, mainly because in the Gifford Pinchot era, the state built many farm-to-market roads and has maintained them ever since. With the increasing urban sprawl the need for more and wider highways has mounted.

The welfare program includes the mental hospitals, some specialized places such as the Crippled Children's Hospital in Elizabethtown, vast aid to individuals by public assistance and to the blind and the like.

It is interesting that all of these three great areas are undergoing considerable change in the Scranton administration.

Much more help has been given to schools and much more help is promised on highways at the same time there is some hope of cutting down on the public assistance phase of welfare by getting more persons off the relief rolls and into jobs.

Governor Scranton has stressed the need for more educational opportunities as a means of keeping people employed. Educate them and they will be better fit for a job in this competitive society. Help our colleges, and this will bring more of the type of industry which relies upon trained people.

At the same time the Governor is being urged by some of us to see that the road program keeps pace with our population growth and our driving economy. Just as it

was important for the farmer to get to market thirty years ago, a person now on his way to industry should not be bottled up by traffic on two-lane highways. It is time we caught up with this need.

**Landis Valley Pulls Them In**  
The state's decision to make further improvements at Landis Valley Farm Museum is sound. Among all of the shrines and attractions maintained by the state Historical Commission, the local Farm Museum is the most popular. Those who have attended the craft days and other special events there will understand why.

It is lively, varied, and interesting.

Many of us wish the late Landis brothers, George and "Henner", could return to see

how many people enjoy their collections. The Landises ransacked the countryside for their overflowing abundance of farm and home equipment, some of which even they could not identify.

When the state took over this vast conglomeration, it took years of thinning out and arranging so that it would have meaning to visitors. An excellent job has been done in this regard. There is enough to interest the specialist and, at the same time, give the average visitor an overall picture of Pennsylvania Dutch farm life. Any person who has not seen the Museum should spend a Saturday or Sunday afternoon there.

**The State Sells Books**  
An attractive "State Book Store" has been opened in the basement of the Capitol. It is open in normal business hours, five days a week, and is operated by the Department of Property and Supplies.

There are about 1700 publications, ranging from pamphlets to bound volumes, some of which are free, while others are sold at cost. All

are published by the State. They treat such diverse topics as weeds, seeds, poultry, trees; travel, job opportunities; fish culture, motor boats, trees, streams and parks.

The Directory of State Publications lists these and their prices. Anyone interested may write to the Capitol Book Store, State Capitol, and inquire about a given subject, to learn if anything has been published on it.

## CARE WITH MACHINERY

This spring operators of farm machinery will be tempted to give children rides. But don't, urges the Farm and Home Safety Committee at The Pennsylvania State University. In one mid-western state, 18 children were killed and 64 others injured in tractor or other farm machinery accidents last year.

## SAMPLE COPIES FREE

Copies of LANCASTER FARMING are not always easy to find — they are not sold on newsstands — and perhaps some of your friends may not be acquainted with our weekly service.

We'll be glad to send, without charge, several copies of LANCASTER FARMING to your friends or business associates. Just write their names and addresses below — (You'll be doing both them and us a favor!)

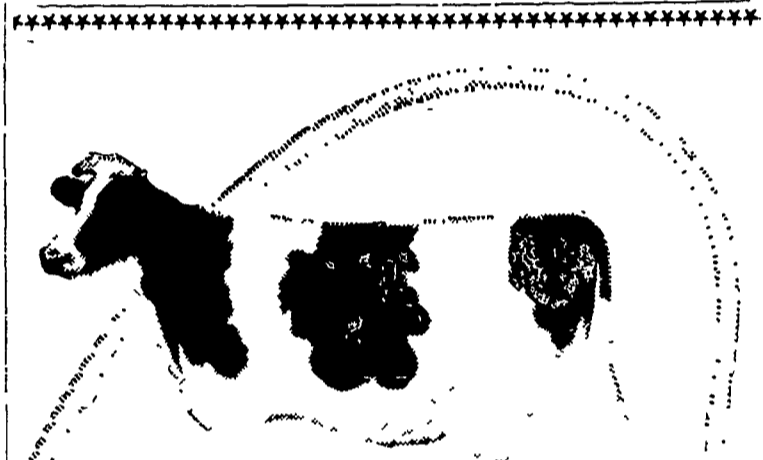
To \_\_\_\_\_  
Street Address & R. D. \_\_\_\_\_  
City \_\_\_\_\_ State \_\_\_\_\_

To \_\_\_\_\_  
Street Address & R. D. \_\_\_\_\_  
City \_\_\_\_\_ State \_\_\_\_\_

(You are not limited to two names. Use separate sheet for additional names.)

Your Name \_\_\_\_\_  
Address \_\_\_\_\_  
 CHECK here if you prefer to send a Year's (52 issues) GIFT subscription for \$2 each to your friends listed above. If so \$\_\_\_\_\_ enclosed, or  
 Bill me later.  
(Each will receive a colorful gift announcement card.)  
Please mail this form to:

**LANCASTER FARMING**  
CIRCULATION DEPT.  
P. O. BOX 266  
LITITZ, PENNA.



## DO YOU KNOW HOW MUCH MILK YOUR COWS CAN REALLY GIVE?

A cow is a factory. She eats grass, hay, silage, grain and Wayne Feeds. She makes milk. Each cow-factory has a certain bred-in capacity. When Bossy's assembly line isn't running at full capacity, she isn't making as much money for you as she should.

■ The way to find out if she's really running at full capacity is to put more feed in and see if you get more milk out. FEED HER ACCORDING TO WHAT SHE COULD GIVE TOMORROW, instead of what she gave yesterday. ■ Wayne can show you how to balance these larger feed intakes so that your cows can handle them. You feed the rumen bacteria too, so they can work harder and digest more roughage. ■ See us now for the Wayne Program that will work for you... choose from these quality Wayne Feeds... Wayne 32 Dairy Krums... Wayne Sweet Bulky... Wayne 14% Fitting Ration... Wayne Test Cow... Wayne Sucrene 16 Dairy... or other Wayne supplements and complete feeds to meet your needs... do it today!

GET ALL THE MILK YOUR COWS CAN GIVE!



H. M. STAUFFER & SONS, INC.  
Witmer

DUTCHMAN FEED MILLS, INC.  
R. D. 1, Stevens

POWL'S FEED SERVICE  
R. D. 1, Quarryville  
R. D. 2, Peach Bottom

MOUNTVILLE FEED SERVICE  
R. D. 2, Columbia

J. K. STAUFFER & SON  
Lawn and Bellaire

HERSHEY BROS.  
Reinholds

C. E. SAUDER & SONS  
R. D. 1, East Earl

GRUBB SUPPLY CO.  
Elizabethtown

MILLERSVILLE SUPPLY CO.  
Millersville

ROHRER'S MILL  
R. D. 1, Ronks

"The workingest 24" mower ever built"

### ROOF RANGER



VARIABLE PITCH BLADE  
Stress-Guard Construction.  
Oil Bath Gear Drive.  
Come in for a  
Demonstration.

## L. H. Brubaker

350 Strasburg Pike, Lanc.  
R. D. 3, Lititz  
Phone Lancaster 397-5179  
Strasburg 687-6002  
Lititz 626-7766

# PLANTING THICK?

## Plant 640



A Great **DEKALB** Variety That STANDS, YIELDS and Takes Heavy Planting



Bred for the farmer who wants a corn for extra stresses of thick planting and heavy fertilization. Bred to fight blight, borers and stalk rot.

"DEKALB" is a Registered Brand Name. The Number is a Variety Designation.

## P. L. ROHRER & BRO., INC.

SMOKETOWN

Ph. Lanc. 397-3539