

● For The Farm Wife

(Continued from Page 8)  
 baking pan. Adjust rack so fish is 4 to 5-inches from heat. Broil 5 to 8 minutes, brushing frequently with sauce. Do not turn fish. Serve hot with lemon quarters; garnish with parsley sprigs. 4 to 6 servings.

**HADDOCK BROILED OR BAKED WITH LEMON MAYONNAISE**

- 2 pounds haddock steaks or fillets
- Salt and pepper
- 1 teaspoon grated lemon peel
- 2 tablespoons fresh lemon juice

- 2 tablespoons chopped greenfish onion
- 1 tablespoon chopped parsley
- 1 teaspoon seasoned salt
- ½ cup real mayonnaise

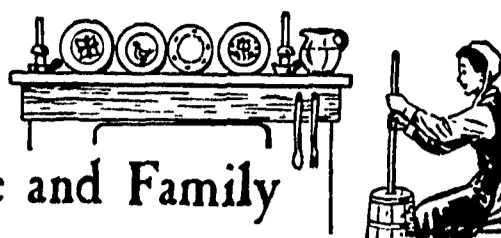
To broil, wipe haddock with paper towel; cut into serving pieces. Season with salt and pepper. Combine grated lemon peel, lemon juice, onion, parsley, seasoned salt and mayonnaise, blending well. Place haddock pieces on well-greased broiler rack. Spoon lemon sauce over fish. Broil 5 to 6 inches from heat, 10 to 12 minutes, or until fish flakes easily with fork. Do not turn fish. Remove to hot platter; garnish with parsley and lemon quarters. To bake, place

fish in well-greased shallow baking dish. Spoon lemon sauce over fish and bake, uncovered, at 350 degrees, 20 to 25 minutes. 6 servings.

**BUTTER BROILED SHRIMP WITH LEMON SAUCE**

- 2 pounds fresh or frozen raw shrimp
- ½ cup butter or margarine to ½ teaspoon onion powder
- ¼ teaspoon black pepper
- ¼ teaspoon oregano leaves, crushed
- 1 teaspoon Worcestershire sauce
- 2 to 3 drops hot sauce
- 1 teaspoon grated lemon peel
- ¼ cup lemon juice

Peel shrimp; leave tail shells on. Devein, pat dry with paper towels. Melt butter in saucepan; add onion powder, pepper, oregano, Worcestershire sauce, hot sauce and grated lemon peel. Dip shrimp in butter sauce; place in a shallow baking pan. Broil shrimp 5 to 6 inches from heat for 5 minutes. Turn and pour remaining butter sauce over shrimp. Broil 3 to 5 minutes; remove to heated platter. Add lemon juice to (Continued on Page 11)



For the Farm Wife and Family

Ladies, Have You Heard? . . .

**Annual Flowers Have Advantages**  
 Annual flowers are inexpensive and quick growing, making a fast return on your investment. Annual flowers have a long blooming period, many of them blooming until frost. You can have a wide range of colors and each plant can produce many flowers.

There's an annual flower for almost any purpose. You can use annuals to add color to a spring-flowering rock garden and to cover up dying foliage of bulbs. You also can use annuals in large beds, for edging, and for window and porch boxes. Annuals lend themselves to a quick change in an overall color scheme.



THOMAS

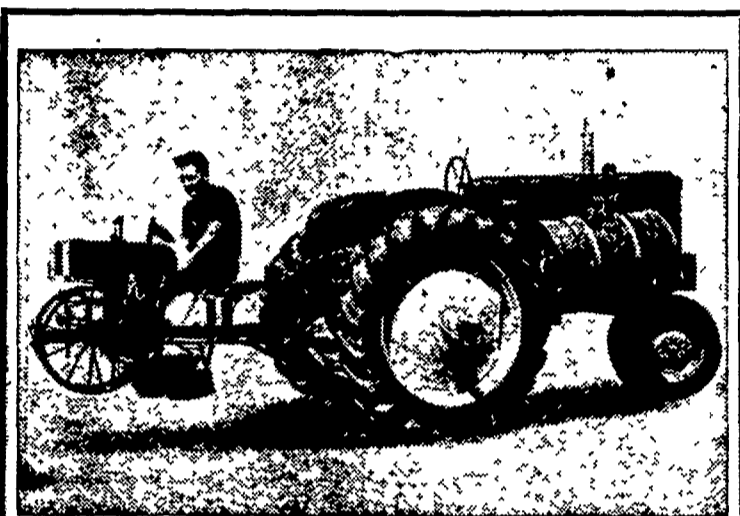
**Buying on Time**  
 —demands even more careful planning than paying cash for merchandise because credit ties up part of your future income. Sometimes families get so much of their income tied up in installment payments that they can't meet

their regular living expenses.

**Good Care Helps Cut Clothing Bill**

If every family member develops good clothing care habits, his garments will give the maximum wear. And ev-

(Continued on Page 11)



SEE THE GENUINE MECHANICAL TRANSPLANTER

HORSE DRAWN OR TRACTOR MODELS

With All The Features The Farmer Wants and Buys

SOLD AND SERVICED BY

**LESTER A. SINGER**

RONKS, PA.

Phone Strasburg 687 6712

**FARM LOANS**

Loans for Machinery, Livestock, Cars, Repairs, and any farm purpose. 10-35 year Farm Mortgages Full and part-time farms eligible

**FARM CREDIT OFFICE**

411 W. Roseville Rd.

Lanc. 393-3921

**DR. ROBERT C. RABENAU CHIROPRACTOR**

**ANNOUNCEMENT OF NEW OFFICE HOURS**

1-4, 6-9 Daily Mornings and Thursday By Appointment Saturday 9-4

309 N. CHARLOTTE ST. LANCASTER, PENNA.

TELEPHONE 394-8104

**Hay! Mr. Farmer!**

High quality hay and forage will lower the cost of your grain and protein feeding program. Enjoy the extra profit. Quality, of course, depends a great deal on the date or stage of cut. Much of this nutritional value will be lost quickly through delays, over exposure, leaf shattering, etc. Field studies reveal a 30% nutritional loss due to rain.

You can avoid much of this risk, as thousands of farmers have been doing, by using the INTERNATIONAL SILO GUARD or HAY GUARD PLAN.

- EXCELLENT FOR: Mixed Grasses - Rye, Oatlage, Alfalfa, Sudex, Corn, etc. Dispenser fully guaranteed — SPECIAL PRICE
- ISF - HAY GUARD — easily applied with Automatic \$32.00
- EXCELLENT FOR: Baling Hay (30-35% M.) or rained on Hay — High moisture Grain, Haylage, etc.
- CHECK YOUR Grain or Forage MOISTURE CONTENT, QUICKLY & ACCURATELY, with the Dip-Shaft Hygrometer — SPECIAL PRICE \$39.00 (Supply is limited)

You can depend on INTERNATIONAL for Quality farm products and Service.

COMPLETE FORAGE TESTING SERVICE AVAILABLE. NO CHARGE.

#1 Dry Matter — Test No. 1580. July 8, 1964, Mr. D. R. Gresham, Catlett, Va. OATLAGE — pro. 12.83% — Carbohydrates & Fat 80.26% — total ash and minerals 6.91% — (Brookside Research Lab.) Preservative — Silo Guard — 1 lb. per ton.

#2 Dry Matter Test — George School Farm, Doylestown, Pa. — July 16, 1963. ALFALFA-DIRECT CUT: pro. 15% — Fiber 27.8% — TDN. 64.6%. Excellent Quality — (Balke Research Assoc.) Preservative — Silo Guard — 1 lb. per ton.

#3 Dry Matter Test — Mr. C. A. Keener, Manheim, Pa., July 20, 1964 — #368 RYE - WILTED - 65% M. - Cut May 5, 1964. protein 12.7%. Fiber 26.9%, TDN 64% (2.6 lb. equal to 1 lb. Hay) (Penna. State University)

ISF - SILO GUARD and ISF HAY GUARD — Available in 25 or 50 lb. Boxes.

CALL FOR YOUR SUPPLY TODAY!

C. W. CASSEL 665-4510 P. O. Box 173 Manheim, Pa.

R. H. MILLER 665-5213 55 S. Grant St. Manheim, Pa.



**NOW** is the time to rid your home of these Destructive pests . . .

**CALL US FOR:**

- FREE INSPECTION, ESTIMATES
- GUARANTEED TERMITE CONTROL
- \$5,000 WARRANTY GUARANTEE

**J. C. EHRLICH CO., INC.**

738 East Chestnut St., Lancaster

Ph. 397-3721