

Pennsylvania Flying Farmers

60 Pennsylvania Flying Farmer members met recently at Queen City Airport, Allentown, Pa., last Saturday morning, April 10th. They arrived from as far as the Ohio state line at Petersburg, Ohio, to attend the regular monthly meeting of the association of Pennsylvania farmers who fly.

Mark Anthony, President,

Indiana, Penna., presided at the business meeting held in the auditorium at the Allen Organ Company. There was a discussion of new tax proposals for the implementing of taxes on aircraft use, radio installations, and transmitter usage. At the same time Regional Director L. L. Logan, Kennett Square, read news releases of the FAA's intention to spend 2½ million dollars on an air show at Dulles Airport. The group feels these proposals are incompatible and a program is under way to contact congressmen and senators to urge their support in killing any imposition of such taxes as unnecessary and unfair.

I.F.F. membership has reached an all-time high of 8,271. Pennsylvania was encouraged to increase its membership in line with the potential of the state which ranks 3rd next to California and Texas in aircraft registration.

The next meeting will be at Schweizer Aircraft, Almira, N. Y., May 8th. The Flying Farmers will see production and demonstration of the Gruman Ag Cat, an agricultural dusting plane and the Schweizer soaring planes. International Flying Farmers President Don Schafer, Sterling, Kansas, will be the featured speaker.

Attending from the local area were Mr and Mrs Henry R. Wilson, Nottingham R2. Mrs Wilson is Pennsylvania Flying Farmer Princess and will be crowned Queen in a ceremony later this summer. Mr and Mrs. David Huber and son James of Peachbottom attended from Lancaster County. Huber is vice president. Ken Habecker and Mr and Mrs Claude Hess of Lancaster also attended.



Meet an ABC "Technician"

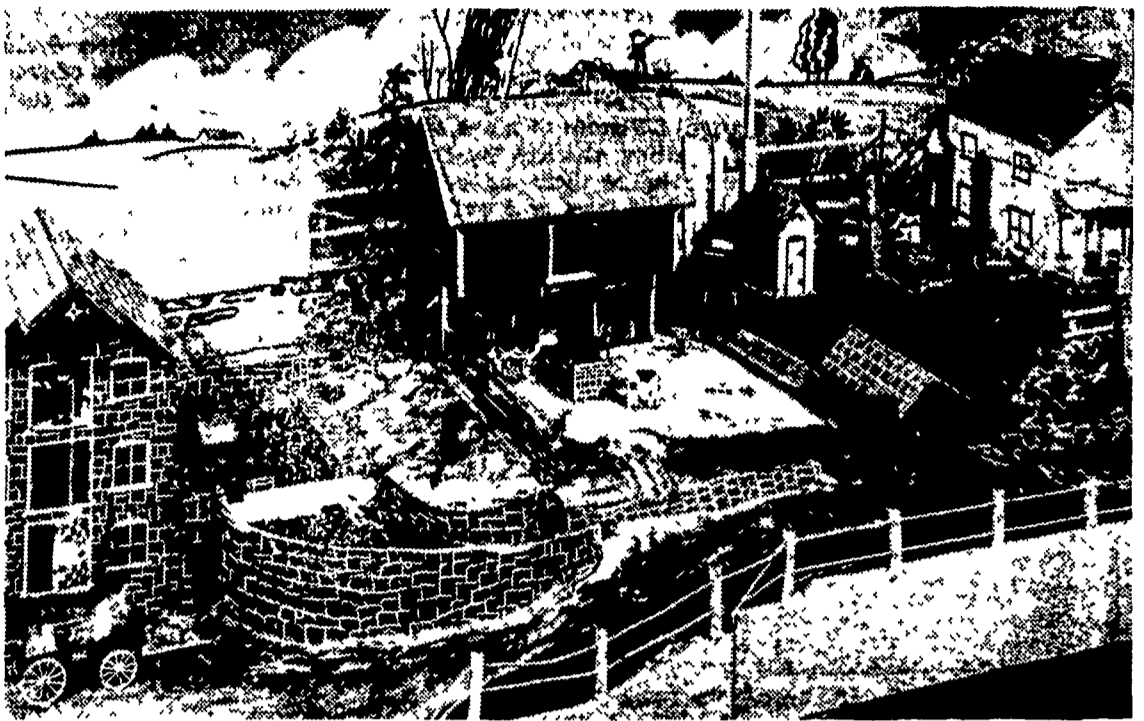
ABC SIRE SERVICE

An ABC Technician is a highly skilled genetic specialist trained in a new way of evaluating cows for proper mating to produce improved progeny. There is no one with his special knowledge in the sire service business.

Write for new mating guide "AMG"

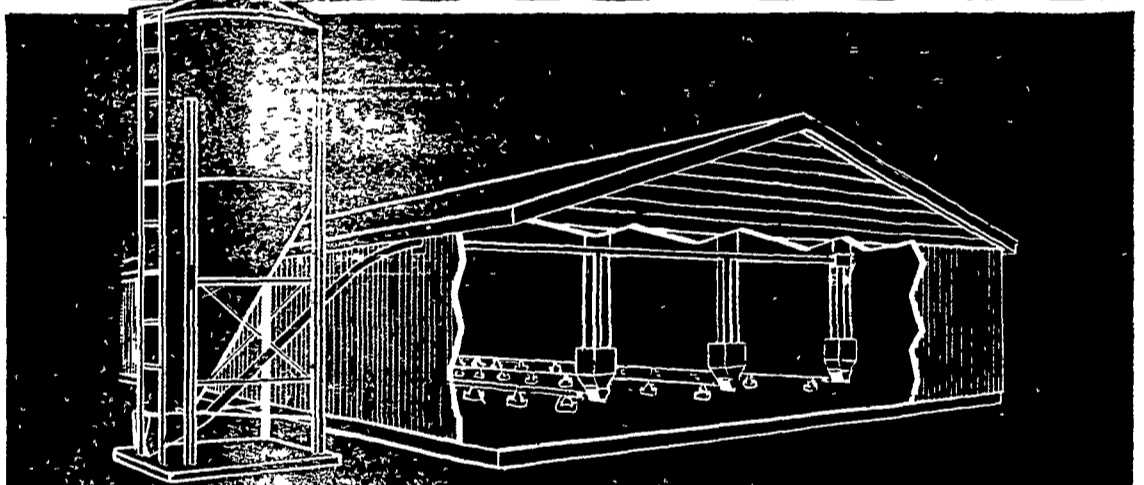
CY R. KING
super-bull making sire history
CALL OR WRITE

ATLANTIC BREEDERS COOPERATIVE
Main office—Lancaster, Pa.
Lancaster 569-0411
Akron 859-2552
Christiana 593-5187
Quarryville 786-7381
Manheim 626-2363
Strasburg 687-6292
Mount Joy 653-1451



A MINIATURE AMISH FARM built by a retired Lancaster County "Dutchman". While no longer farming, he loves the soil and farm so much that he built his own miniature farm which has a live stream running past the buildings. A system of tiny water wheels furnishes water to the house and barn, and power to handle grain bags at the old mill. To the left of the mill (not shown in this picture) is an old time sawmill. It runs on power diverted from the grist mill. This unusual exhibit is on display at Rutt's Gift Shop, E. Main St., Intercourse.

FLEX-A-FILL



Climbs, turns, fills without universal joints

This new... system operates... and from only one power... moves up, down... corners to... away! Just one... system operates... only when needed... no joints... clogging.

Auger... low horsepower... operating... 312 rpm, it will... 800 pounds of... 500 pounds of... hour.

Bin fills easily...empties completely

Fill it and forget it because its weather-tight construction assures content safety until the bin is empty. "All-Out" bottom empties completely, prevents bridging... no internal braces to jam contents and stop feed flow. Caulked seams, neoprene washers, heavy gauge galvanized steel give long rust-free life. Available in side and center-draw models.



Write today or see your Anderson man

Anderson Box Company, Inc.
Home Office—P. O. Box 1052, Indianapolis, Ind.

32 WAREHOUSES COAST-TO-COAST

- | | | | |
|-------------------------|-------------------------|-------------------------|----------------------------|
| Albertville, Alabama | Gainesville, Georgia | Milford, Indiana | Salisbury, Maryland |
| Batesville, Arkansas | Gonzales, Texas | Minneapolis, Minnesota | Sioux City, Iowa |
| Blumbia, South Carolina | Harrisonburg, Virginia | Nacogdoches, Texas | Springdale, Arkansas |
| Dallas, Texas | Indianapolis, Indiana | North Wilkesboro, N. C. | Springfield, Massachusetts |
| Decorah, Iowa | Lancaster, Pennsylvania | Oklahoma City, Oklahoma | Springfield, Missouri |
| Des Moines, Iowa | Macon, Georgia | Omaha, Nebraska | Tampa, Florida |
| Dothan, Alabama | Memphis, Tennessee | Raleigh, North Carolina | Turlock, California |
| Evansville, Indiana | Mendenhall, Mississippi | Russellville, Arkansas | Worthington, Minnesota |

For your corn!

You need

Knoxweed
PRE EMERGENCE HERBICIDE

Here's why:

- KNOXWEED leaves no soil residue—permits crop rotation—will not build up residues from season to season.
- KNOXWEED controls both annual grasses and broad-leaf weeds including giant foxtail, Johnson Grass seedlings, shatter cane and others.
- It controls weeds as they germinate—eliminates weed competition during the first critical three weeks when corn is young and needs help.

See Your FARM CHEMICAL DEALER