

Weekly Broiler Report

BROILER PLACEMENTS DECLINE 4 PERCENT

Placements of broiler chicks in the Commonwealth during the week ending April 3, totaled 850,000, according to the Pennsylvania Crop Reporting Service. The placements decreased 4 percent from the previous week but were 11 percent above a year ago. Settings for broiler chicks totaling 1,493,000 advanced 3 percent from the previous week and 33 percent from a year ago. The current 3-week total of eggs set increased 33 percent from last year. In shipments of broiler-type chicks during the past 10 weeks totaled 775,000 or 131 percent above the comparable period in 1964. Outshipments (2,063,000) were 43 percent above the comparable period a year earlier.

Placements in the 23 major-producing States totaling 47,330,000 increased 1 percent from the previous week and 6 percent from a year earlier. The 10-week total increased 5 percent from last year. Settings of 64,850,000 were up 1 percent from the previous week and 6 percent from a year ago. The 3-week total increased 6 percent from a year ago.

Eastern Pa. & N.J. Live Hens

Prices on light type hens unchanged. Buying interest light. Offerings increased slightly & adequate off farm movement anticipated to increase following religious holiday season. Trading on heavy type hens limited with an occasional flock purchased at farm for 19c. Sentiment barely steady with offerings adequate for a dull buying interest. Prices paid at farms: Light type hens 6-7¼ M 6½-7c.

Fogelsville

(Prices for dock weights, cents per lb except where noted)

Hens, light type 6½-15, 7 8½; Hens, heavy type 12-27½, 20-26; Pullets 25-41½, 33-41; Roasters 23½-41½, 30-37; Capons 44½-46½; Ducks 28-35½; Drakes 26-38, 33-38; Turkeys, toms 22-25; Turkeys, hens 25-38, 33½-37½; Rabbits 35-50, 41-50; Guineas 35-72½, 60-72½; Pigeons (per pair) 85-135, 90-97½; Jumbo Squab 75-85, 85. Total coops sold 694.

New Holland

(Continued from Page 2)

and the sale was active and steady. Mules sold singly for 140-315, and in pairs for 275-615. Riding horses brought

The Delmarva broiler and fryer live prices continued to decline nearly ½ cent. Demand barely fair for moderate auction offerings, affected only slightly by widespread extension of pick-up dates. Mostly ¼-½ cent lower and were very competitive.

Estimated slaughter for Friday and Saturday: 717,000 head, compared with 805,000 last weekend.

Prices paid and reported purchases for the 24-hour period ending 10:30 a.m. Friday: broilers and fryers, 15-2-16.5; 954,000 head, including 381,300 head purchased of 455,100 head offered at Eastern Poultry Growers Exchange Thursday.

Twenty-seven percent of the broilers sold for 16.0-16.3

115-450; driving horses, 115-225; killers, 6-6½ cents per pound Pony mares sold for 30-85 and geldings 25-115

The 475 hogs and 15 shoats received at the April 5 sale sold steady to strong with market hogs retailing for 19-20.50; wholesale (U.S. 1-3), 18-18.85; heavyweights, 17.75-18. Shoats brought 10-14.

At the calf sale on April 5 the trend was \$1 higher for the 100 head offered Choice brought 33.50-38; Good and Low Choice, 32.50-33.50; Standard, 30-32; Common, 15-25.

Lancaster Farming

Weekly New York Egg Mkt.

From Monday, April 5th to Friday, April 9th

	Mon.	Tues.	Wed.	Thur.	Fri.
WHITE					
Ex. Fcy. Hywts	34¼-35	34¼-35	35½	36½	37½
Fcy. Hywts.	33½	33½	33½-34	35	35½
Fcy. Med.	31-31½	31-31½	32½	34	35
No. 1 Med.	30-30½	30-30½	30½-31	31-32	32-33
Pullets	27	27	27	29	25-26
Peeweels	20	20	20	20	20
BROWN					
Ex. Fcy. Hywts.	35½-36	35½-36	36	37	37-37½
Fcy. Hywts.	34	34	34	34-35	35½
Fcy. Med.	32½	32½	32½	33	33-34
Pullets	29½	29½	29½	29½	26
Peeweels	20	20	20	20	20
MIXED					
Fcy. Hywts.	33	33	33	34½	35
Standards	30	30	31	31-31½	31½-32
Checks	25½	25½	25½	27	27

TREND. Market continued very tight on mediums, fine quality large white, extra large, and jumbo short

Copyrighted 1964 By Urner-Barry Co.

Lancaster

(Continued from Page 2)

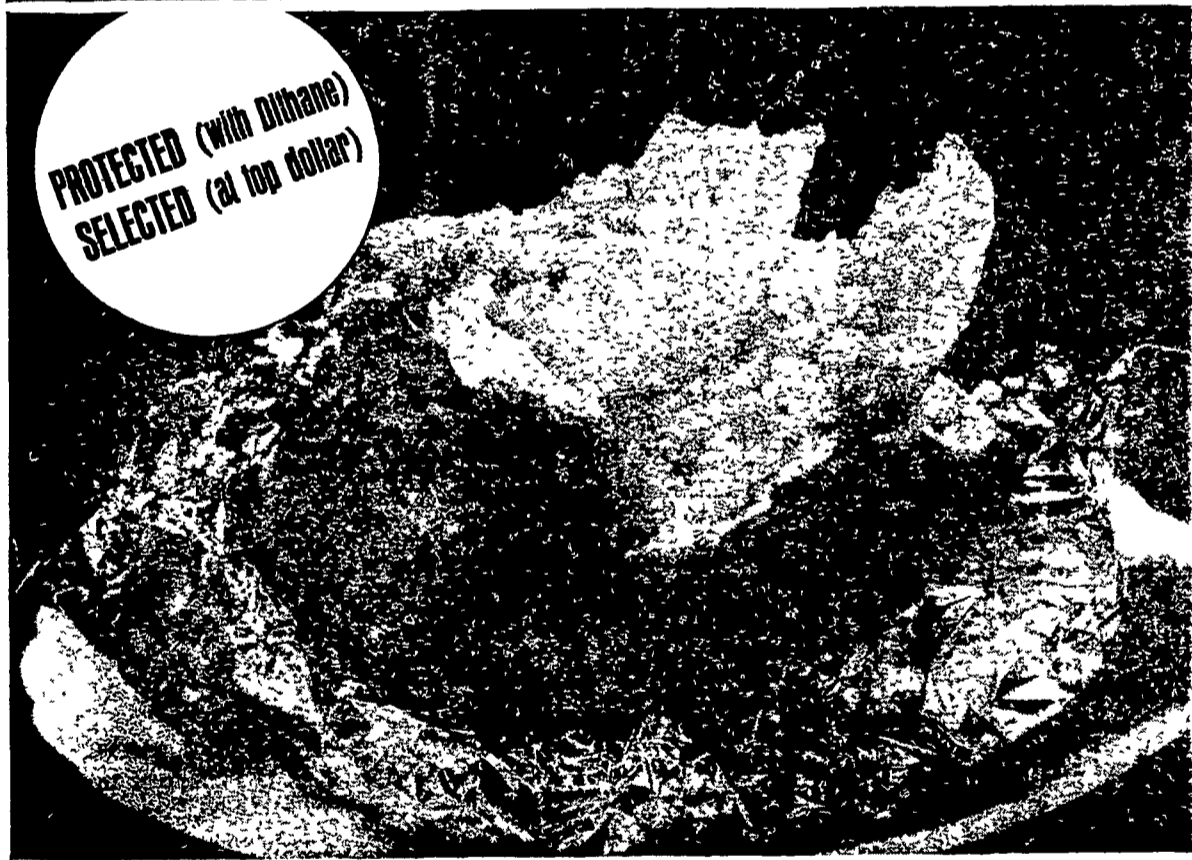
800 lbs. 24 25-25 00, Few lots mostly Good With End Choice 600-900 lbs 22 00-23 50, One Lot Standard 950 lbs. 20.75.

Calves 575 Vealers mostly steady. Choice 34 00-38.00, Few High Choice and Prime \$38 00-40.00, Good 29 00 35 00, Standard 25 00-29 00, Utility 22.00-26 00, Cull largely 18 00-22.00, With 60-75 lbs. 14 00-18.00.

Hogs 1258. Active, Barrows and gilts steady to mostly 25c Higher Few Sows steady. Barrows and Gilts. US 1-2 190-240 lbs 19 00-19.50, Few 8 00.

US 1 On Monday 19.50-19.75, 5 head \$20 00, US 1-3 180-250 lbs. 18 50-19 00, 2-3 220-240 lbs. 17 75-18 50, 240-280 lbs. 17.25-17.75 US 1-3 350-450 lb. Sows \$14 00-14.50.

Sheep 625 Moderately Active, Spring lambs weak to \$2.00 lower Woolled lambs steady Ewes steady. Good 75-100 lb Woolled lambs 75-100 lbs. 23 00-26 00, Utility 20 00-23.00, Choice and Prime 50-70 lbs Spring Lambs 32 00-35.00, Choice \$30.00-32 00, Mixed Good and Choice 40-80 lbs. 28 00 30 00, Utility to Choice Slaughter Ewes 7.00-

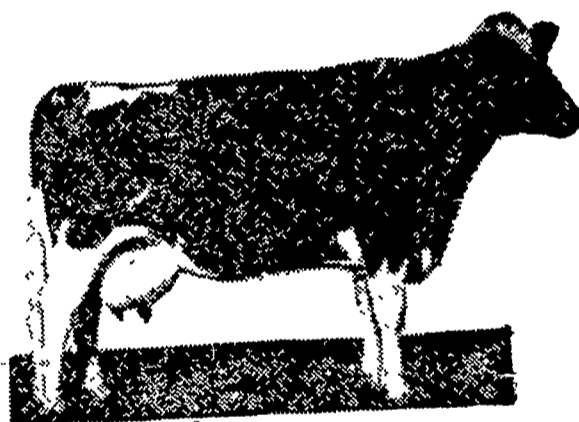


DITHANE® M-45 protects against profit-robbing blight

During the past two seasons DITHANE M-45 has become the preferred fungicide among progressive potato growers. The reasons for its country-wide leadership in potato blight control are very important to you: DITHANE M-45 is more potent than other fungicides against early or late blight fungi... It supplies superior control even during severe blight attacks... DITHANE M-45 sprays easily and spreads evenly, clings to the foliage and resists weathering by rain or irrigation... DITHANE M-45 also helps prevent late blight tuber infection to reduce storage problems. Protect your potato investment in '65, with the best available fungicide—DITHANE M-45.



Your Best Dairy Feed Buy



WIRTHMORE Hi-Cal Pellets

- Formulated & fortified for high production
- Molasses coated — highly palatable
- High in energy — 76 therms



Paradise Supply

Paradise
687-6292

J. K. Stauffer & Son

Lawn and Bellaire
665-3121 — 367-2321