

# MARKET NEWS REPORT

## At Lancaster Yards

### Weekly Review

April 9, 1965  
Cattle 3250 Supply included 15 percent Cows and Bulls, 20 percent Feeder steers, with the balance mainly Slaughter steers including 12 loads Bought to Arrive, 10 loads Choice with Few Prime 1150-1225 lbs 27 60, 1 Load Choice 1300 lbs. 26 75, 1 load Good With End Choice 1200 lbs 24 25 Slaughter steers 50-100 Higher Cows weak to mostly 25c lower Bulls steady to 50c Higher Feeder steers steady to strong  
Slaughter Steers Choice 950-1350 lbs 25 50-27 00. Load mixed Choice and Prime near 1200 lbs 27 25, Few High Choice and Prime 27 10-28 25, Including Load 1160 lbs at 28 25, Mixed Good and Choice 24 75-25 75 Good to Low Choice 23 25 25 25 Mixed Standard to Low Good 20 75-23 50 Utility 18 00-20 00  
Cows Cutter and Utility 13 75-15 75 Couple 15 85, Canner and Low Cutter 12 75-14 00, Shelly Canner 12 00-12 75 Bulls Good and Choice 19 50-22 00, Few Individual

### Auction Only

April 7, 1965  
Cattle 758. Slaughter steers steady to 25 higher. Cows about steady. Bulls fully steady Supply included 12 percent Cows.  
Slaughter Steers Choice 950-1350 lbs 25 50-27 00, 10 head High Choice and Prime 27 10-28 25, Mixed Good and Choice 24 75-25 75, With weights over 1050 lbs. 25.00-25 75, Good 23 25-25 25, Standard to Low Good 20 75-23 50, Utility 18.00-20 00  
Slaughter Heifers: Good and Choice 750-1100 lbs 20 85-24 10  
Cows Cutter and Utility 13 75-15 60, Couple 15 85, Low-Cutter 13 00-13 75, Bulls Utility to Good 18 50-21 35  
Feeder Steers Good to Low-Choice 550-815 lbs 20 85-22 75, Few Choice 850-1100 lbs 23 35-25 00  
22 50, Utility and Commercial 18 00-20 00 Few 1800-2000 lb Utility 21 25-21 60  
Feeder Steers Choice 600-25 00  
(Continued on Page 3)

## Vintage Auction

April 7, 1965

Cattle 694 Slaughter steers 50-75c higher, Cows steady to 25c lower; Few sales 50c lower. Bulls strong to 25c higher.  
Slaughter Steers: Choice 1050-1350 lbs. 25.75-27.00, 5 head 27.10-27.75, Choice 950-1050 lbs. 25.25-26.50, Mixed Good and Choice 24.75-25.75, Good 1050-1200 lbs. 23.25-25 00, Good 850-1000 lbs. 22.60-24.75, Standard 20.50-23.35.  
Heifers: Good and Choice 800-1075 lbs. 21.75-23.85.  
Cows: Cutter and Utility 14.00-15.75, Few sales 15.85-16.10, Canner and Low Cutter 13.25-14 25.  
Bulls: Good 18 75-22 25, Utility 18.00-20 00.  
Calves 290. Vealers mostly steady Choice 36 00-38 50, Good 31.00-34 50, Standard 28 50-31 00, Utility 23 00-28 00, Cull mainly 18 00-23 00.  
Hogs 122 Barrows and gilts mostly 50 higher US 1-3 195-235 lbs 19 00-19 50, US 1-2 165-185 lbs 18 10-19 10 Sows: US 2-3 350-550 lbs 13 75-14 75  
Sheep 165 Choice and Prime 30-40 lb Spring lambs 35 00-42 00, Choice 40 80 lbs. 26 50-31.00, Good and Choice 50-70 lbs 22 00-26 00  
At the April 3 hog sale, 132 head were offered Market hogs weighing 160-180 lbs brought 16 50-18 50, 180-200, 17.50-19 35; 200-220, 17 25-19 60, 220-240, 16 25-19 75, 240

## New Holland Auction

April 8, 1965

Cattle 1390: Slaughter steers uneven, mostly steady, with Good to Low-Choice steady to 50c higher. Cows about steady. Bulls weak to mostly 50c lower. Supply included 15 percent Cows, 15 percent Feeder and Replacement cattle. The 1965 cattle is the largest receipts since mid 1962.  
Slaughter Steers: High Choice and Prime 1050-1350 lbs. 26.50-27 35, Choice 1000-1350 lbs. 25.00-26.75, Mixed Good and Choice 24.25-25 25, Good 950-1250 lbs. 22 75-24 50, Standard to Low Good 20.85-23 50  
Cows: Cutter and Utility 13 75-16.00, Several 16.00-16 60, Canner and Low Cutter 12.75-14 25  
Feeder Steers: 5 loads Choice and Prime 975-1050 lbs carrying High Good and Choice Slaughter Flesh 24.50-26 00, Good and Choice 550-950 lbs 20 75-23 60  
Calves 358 Vealers fully steady, with Cull and Utility \$1 00-2 00 higher Choice 35.00-39 00, Good 31.00-34 50, Standard 28 00-32 00, Utility 24.00-28 50, Cull mainly 19 00-24.00, with 60-75 lbs 15 00-20.00.  
Sheep 150 Choice and Prime 25-40 lbs Spring Lambs 45 50-53 00, Choice 30-50 lbs 35 00-41 50, Choice 50-80 lbs

28.50-31.50, Good 25-50 lbs. 22.50-30.00.

Cows sold slow to steady at the April 7 sale with 96 cows, 5 bulls, and 13 heifers offered. Fresh Holsteins brought 250-410; Guernseys, 125-215; other breeds, 140-250. Bulls sold for 185-195, and heifers 65-170.

At the horse sale on April 5, receipts totaled 292 head

(Continued on Page 3)

## Chicago Cattle

### Weekly Review

CATTLE — Receipts 21,600 compared with 26,200 last week and 26,000 a year ago. Twelve market supply 142,000 compared with 152,500 last week and 184,500 the corresponding week one year ago  
Choice and Prime slaughter steers 50-75 higher, Standard and Good steers 25-50 higher, mostly 25 higher Heifers 50-75 higher. Cows uneven, Commercial Steady to 25 lower, others Steady to Strong Bulls 25-50 higher Feeders scarce, Steady to Strong In the carlot dressed meat trade, steer beef 50-1 50 higher, Choice at the full advance, heifer beef 50-1.25 higher Cow beef very uneven, Utility and Commercial Steady to 50 lower, Canner and Cutter steady to 25 higher.

Caution is not cowardly, and carelessness is not courage.

## New Holland Sales Stables, Inc.

### Sale Schedule

Monday: Horse Sale . . . . . 10:00 A.M.  
Tack Sale to Follow Horse Sale  
Monday: Hog Sale . . . . . 11:30 A.M.  
Monday: Beef Cattle . . . . . 2:00 P.M.  
Sale Order — Bulls, Steers, Cows, Calves  
Wednesday: Sale of Dairy Cattle . . . . . 12:30 P.M.  
Thursday: Sale of Beef Cattle . . . . . 12:30 P.M.  
Sale Order — Bulls, Steers, Cows, Calves

JOHN H. GINGRICH, Mgr.

Ph. New Holland 354-2194

New Holland, Pa.

## Vintage Sales Stables, Inc.

PARADISE, PENNA.

Bulls, steers, butcher cows, Hogs, lambs and veal calves

Sold On Commission  
Sale every Tuesday 2 P.M.

Fat hogs and Feeder pigs sale  
Every Saturday at 10 A.M.

For marketing information  
Phone Area Code 717-442-4181  
Box 100 Paradise, Pa.

10 mi. East of Lancaster on Rt. 30

Kenneth E. Hershey, Sales Manager

Need . . .

## HAY—STRAW—EAR CORN

Buy Now and Save!

More and more farmers are buying from us for better value and all around satisfaction.

Delivered — any quantity

Phone Area Code 717 687-7631

Esbenshade Turkey Farm

Since 1890

PARADISE, PA.

## Is THAT You, Mr. Jones?

Every day we receive phone calls and letters from stockmen asking for our advice. Tom Brown, for example, wants to know when the best time will be to sell his lambs, and Jim Smith has a load of hogs to consign. Will Wednesday be better than Monday? And then there is Charlie Jones. He has a good load of cattle, and he wants to know how the market will be next month.

We feel flattered, of course, that so many people contact us. But then again, there must be a good reason for all this. Maybe it's because we've been at this business for 67 years. Or maybe it's because we have specialists in every department — cows, bulls, stockers and feeders, fat steers and heifers, lambs, hogs, and calves — who have the ability, knowledge and experience to give you honest advice and information.

So, do what Mr. Brown and Mr. Smith and Mr. Jones do. Call or write us anytime. You will be glad you did.



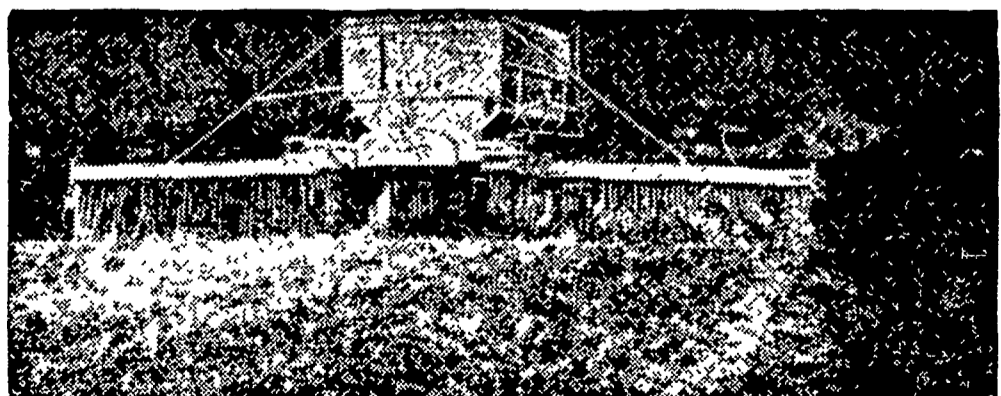
## Walter M. Dunlap & Sons

AUCTION OR PRIVATE TREATY

Union Stock Yards, Lancaster, Pa. — Tel: 397-5136

"THE OLD DEPENDABLE" — SECOND TO NONE

## MARTIN'S LIMESTONE



Order your Limestone now for even spreading by our modern spreaders.

Quick Service Free Soil Tests Quality Limestone

Ivan M. Martin, Inc., Blue Ball, Pa.

Telephones: New Holland 354-2112

Terre Hill 445-3455

GAP Hickory 2-4148