

Weekly Broiler Report

Placements Increase 12%
Placements of broiler chicks in the Commonwealth during the week ending March 27, totaled 886,000, according to the Pennsylvania Crop Reporting Service. The placements increased 12 percent from the previous week and 10 percent from a year ago. Settings for broiler chicks totaling 1,443,000 advanced 3 percent from the previous week and 32 percent from a year ago. The current 3-week total of eggs set increased 31 percent last year. Inshipments of broiler-type chicks during the past 10 weeks totaled 712,000 or 106 percent above the comparable period in 1964. Outshipments (2,035,000) were 33 percent above the comparable period a year earlier.

Placements in the 23 major-producing states totaling 46,959,000 increased 2 percent from the previous week and 6 percent from a year earlier. The 10-week total increased 5 percent from last year. Settings of 64,363,000 were up 1 percent from the previous week and 5 percent from a year ago. The 3-week total increased 5 percent from a year ago.

Fogelsville
(Prices for dock weights, cents per lb. except where noted)

Hens, light type, 6-13½, 6-8; Hens, heavy type, 11½-27½, 19-23; Pullets, 22½-40, 30-38; Roasters, 20-35½, 29-34½; Ducks, 36-39; Drakes, 31-39; 37-39; Turkeys, Toms, 23-27; Turkeys, Hens, 31½-37; Rabbits, 22-54, 43-50; Guineas, 60-62½; Pigeons (per pair), 72½-1.65,

80, Jumbo Squab, 90. Eastern Pa. & N.J. Demand fair on light type hens with prices unchanged to ¼c higher. Offerings barely adequate and generally held for additional egg production preceding Easter & Passover religious holiday. Buying interest only fair for heavy type hens. Offerings adequate. Few lots of roasters subject to grade discounts moved off farms at 21c. Limited quantity of 89# light type turkeys sold at farm for 35c. Some processors bringing in heavy type hens turkeys from Southern production points. Prices paid at farms: Light type hens 6-7¼c; Heavy type hens 18-21 mostly 18½-19c.

● Chicago

(Continued from Page 2)
28 50, highest price since September 4th of last year, and compared with a top of 23 00 year ago this week. Nineteen loads of mostly prime 1160-1400 lbs 27 75-28 00, mixed high choice and prime 1150-1400 lbs 26 50-27 50, three loads choice and prime 1450-1760 lbs 26 00-27 00. Load high choice and prime 1800 lbs 22 50, choice 1150-1400 lbs 24 25-26 00, choice 1000-1150 lbs 24 00-25 25, mixed good and choice 23 50-24 25, good 900-1300 lbs. 21 00-23 25, Standard and Low Good 18 00-21 00. Several loads Standard and Good Holsteins 19 00-20 00, Utility and Standard 775 lbs 17 50.

Slaughter heifers Two loads high choice and prime 950 lbs 24 25, Choice 800-1100 lbs. 23 00-24 00, mixed good and choice 22 50-23 00, good 20 00-22 50, standard and low good 18 00-20 00.

● Delmarva

Delmarva broiler and fryer live prices advanced nearly ¼ cent. Demand good for moderate auction offerings.

Ready-to-cook demand fair to good on prior commitments. Retail features activity stimulated movement.

Delivered prices mostly ¼ cent higher in a slightly higher range.

Estimated slaughter for Friday and Saturday, 805,000 compared with 707,000 last weekend.

Prices paid and reported purchases for the 24 hour period ending 10 30 a.m. Friday: broilers and fryers, 16 7-18 1; 1,191,700 head, including 460,100 head offered and sold at the Eastern Poultry Growers Exchange, Thursday.

The Delmarva broiler-feed ratio for the week ending 3/26/65 was 3 2, the same as the preceding week. The average mash price was \$103 49, average broiler price was 16 70 cents per pound.

I.H. SHOWS NEW TRACTORS

On March 16 and 17, the International Harvester Company hosted their farm and industrial dealers at the Pennsylvania State Farm Show Building where they introduced the new 424 and 2424 series tractors.

Dealers were given the opportunity to not only hear about the new tractors but were able to drive them, test their power steering, the differential lock and their other outstanding features. They were also given information on the power forage feeders, the No. 10 drill, 455 planters, No 10 auger cart, disk har-

Weekly New York Egg Mkt.

From Monday, March 29th to Friday, April 2nd

| | Mon. | Tues. | Wed. | Thur. | Fri. |
|-----------------|------|--------|--------|--------|--------|
| WHITE | | | | | |
| Ex. Fcy. Hywts. | 34¼ | 31½-32 | 33 | 33 | 33½-34 |
| Fcy. Hywts. | 32½ | 30 | 31-31½ | 31½ | 32-32½ |
| Fcy Med | 30½ | 28½ | 29 | 30 | 30 |
| No 1 Med | 28 | 27 | 27 28 | 28 28½ | 28½ |
| Pullets | 27 | 26 | 26 26½ | 27 | 27 |
| Peewees | 21 | 20 | 20 | 20 | 20 |
| BROWN | | | | | |
| Ex Fcy. Hywts | 38½ | 35½ | 35½ | 35½ | 35½ |
| Fcy Hywts | 35½ | 32½ | 32½ | 32½ | 32½ |
| Fcy Med | 31½ | 30 | 30 | 31 | 31 |
| Pullets | 28 | 27 | 27-28 | 28 | 28 |
| Peewees | 21 | 20 | 20 | 20 | 20 |
| MIXED | | | | | |
| Fcy Hywts | 32½ | 30 | 30-31 | 31-31½ | 31½ |
| Standards | 31 | 28½ | 29½ | 29½ | 29½ |
| Checks | 27 | 26 | 26 | 26 | 26 |

TREND Market showing good balance on large whites; browns continue in light supply. Small sizes well cleared.
Copyrighted 1964 By Urner-Barry Co.

row line and the new mulch tillage attachment.

● Vintage

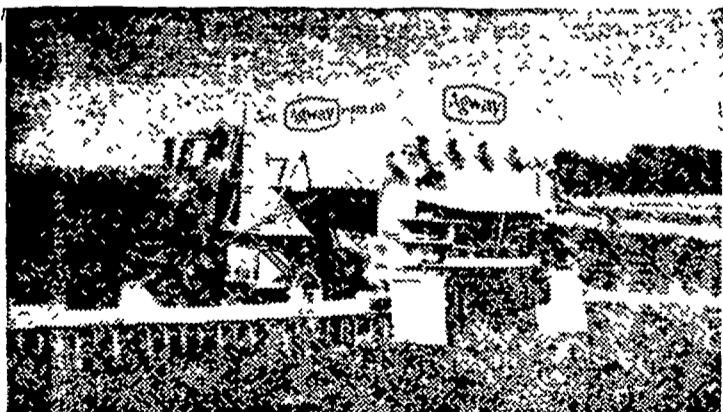
(Continued from Page 2)
Spring Slaughter Lambs. Choice 40-70 lbs 29 00-33 50, Few Choice and Prime 45-65 lbs. 34 00-38 50, Good and Choice 35-70 lbs 26 00-28 50, Woolled slaughter Ewes, Utility and Good 7 00-9 00
At the hog sale on Mar 27 receipts totaled 224 head. Market hogs weighing 160-180 lbs brought 16-18 60, 180-200, 16-20 10, 200-220, 18 35-19 35; before dairy cows go out to 220-240, 18 25-19, 240 and up, 14 50-18 10. Sows sold for 10 50-14 25.

PASTURE COWS SLOWLY

Don't move your cows out on lush pastures too soon is the advice of Joe Taylor, extension dairy specialist at The Pennsylvania State University. He warns that a sudden change from winter feeding to pasture feeding can cause mastitis, and suggests feeding some hay and grain before dairy cows go out to pasture each day early in the season.

\$8 for \$1

for your return
on Agway lime



ENOS R. BUCKWALTER
2281 Old Phila. Pike

MAURICE M. GOOD
Gordonville R1



FARMERS FEED
& SUPPLY.
New Holland, Pa.

WILSON M. SCOTT
Willow Street R1
QUARRYVILLE
AGWAY STORE
Church St., Quarryville, Pa.

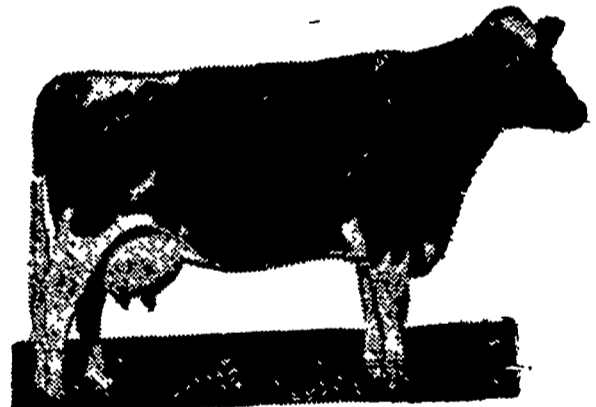
You can get back up to \$8 for every dollar you spend on lime. Here's how the 8 to 1 figures are obtained.

According to a leading agronomist at Pennsylvania State University, a ton of lime will return a ton of milk over a rotation. With Agway lime at about 10 dollars per ton and milk at about 80 dollars per ton, your return is about 8 dollars for every one dollar you spend on lime.

And remember this: corrective liming keeps paying off for many years. Once your pH is up to the right level, it takes no more lime to maintain it at this level than to maintain it at the lower, unproductive level.

Let us test your soil today. And take advantage of Agway spreading service. Agway operators are well trained, responsible men who'll do the kind of a spreading job you need. Call us now.

Your Best Dairy Feed Buy



WIRTHMORE Hi-Cal Pellets

- Formulated & fortified for high production
- Molasses coated — highly palatable
- High in energy — 76 therms



Paradise Supply

Paradise
687-6292

J. K. Stauffer & Son

Lawn and Bellaire
665-3121 — 367-2821