

● **A Shovel**

(Continued from Page 13)

Dr. Samuel Guss, extension veterinarian of Penn State, told the group that in the main diseases affecting feeder cattle 90 percent of the effective treatment involves removing the sources of injury and minimizing stress.

He listed parasites, both internal and external, as chronic feeder problems. "As long as young cattle are on

milk they aren't bothered by worms," he said, "but all older cattle are infested with worms that live in the gut and may cause unthrifty gains." He outlined preventive and treatment programs.

Sanitary feeding procedures such as keeping hay and water away from the bedding areas can help minimize the worm population. To treat, a feeder may use phenothiazine which is cheap though un-

palatable, or, thlbenzole which is safe, effective on worms and larvae, but relatively expensive.

"External parasites can cost as much as \$10 per head if untreated," the veterinarian said. He reported that lice and mange are the main external parasites troubling Pennsylvania cattlemen. It is no longer practical, because of residue problems in the meat, to use DDT and/or Lindane. The recommended treatment today is Ciodrin, he said. It may be used liberally and is quite safe.

One of the best ways to tell a sick animal, short of taking its temperature, is to look at its ears. If one or both ears are hanging down, it's a good indication the animal is running a fever. This examination should be made before the steers are unloaded, Guss said.

"When you bring your steers home try to minimize upsets for two weeks," Guss told the group. "Never excite them; don't worm them or spray for lice. The best thing would be to put them on pasture, but if that's not possible, put them in the lot and feed just grass hay."

He discussed the common problems of shipping fever, pink eye, and foot rot. He said there is no effective prevention of shipping fever, but that a shot of penicillin before shipping has proved helpful. Pink eye can be helped by a shot of Vitamin A, getting the animal into a dark, dust-free quarters. Foot rot organisms are present in any feedlot, or in manure-contaminated soil, and gain entrance into the animal's body through a cut or bruise. Keep hoofs short and walk steers through a copper sulfate footbath.

GRAYBILL HONORED BY CLAY EQUIP. CO.

Wilbur Graybill local dealer for Clay Equipment Corp., serving the Lititz, Pa. area, has been awarded membership in the Clay "400" Club for 1964. This is an organization of dealers throughout the country who have distinguished themselves in the sales, installation and service of Clay "Pushbutton" farm equipment.

The award was announced by Roger Clay president of the Cedar Falls, Iowa firm

Penn State Plans Open House For Ag. Career Info

The College of Agriculture of the Penn State University will hold its annual Open House on April 3 to acquaint high school students and teachers with developments and opportunities in the agricultural sciences. Students are encouraged to bring their parents to discuss these opportunities with the faculty members who will be on hand.

"The Open House response is evidence that large numbers of non-farm youth in Pennsylvania are interested in the agricultural sciences," stated Howard B. Sprague, former chairman of the event and now Executive Secretary of the Agricultural Board for the National Academy of Sciences — National Research Council

"We have discovered a deep interest in our fields of science on the part of a wide range of people," Dr. Sprague said in a recent journal article

He concluded that such an event helps many people understand the role played by the College of Agriculture and the Agricultural Experiment Station in the economy and life of the state

Open House headquarters will be the Hetzel Union Building known as the "HUB" All events will be within easy walking distance of the "HUB" and will be underway from 8 a.m. to 4 p.m.

● **Witmer**

(Continued from Page 13) 15,230 pounds of milk and 709 pounds of fat, in 305 days, Penn Del Imperial Dixie, a Ji 3 year-old, produced 11,560 pounds of milk, and 567 pounds of fat in 305 days

ANNUAL SPRING

STOCK CATTLE SALE

FRIDAY, APRIL 9, 1965

Sale Starts — 1:00 P.M.

800 HEAD 800

STEERS and HEIFERS
Herefords, Angus, Shorthorns
All Local Cattle

BLUE RIDGE LIVESTOCK SALES, INC.
Charles Town, W. Va.

C. H. WOLGEMUTH & SONS
10TH ANNUAL

ALL DAY SALE

Saturday, April 10, 1965

10:00 A.M.

Manheim, Lancaster County, Pa.
(4 Miles West of Manheim, Pa.)

20 TRACTORS — BALERS — COMBINES
FARM EQUIPMENT
DAIRY AND POULTRY EQUIPMENT
HARDWARE — TOOLS — LUMBER — HAY
STRAW

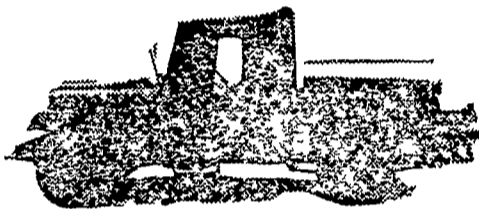
Cousins with dry goods. Anything you would find on a large or small farm.

NOTE — Farmers and Dealers — Cash in on that surplus equipment. Anything sold on commission. We begin receiving equipment March 29 till day of sale. NO GOODS received Saturday morning April 10, except by appointment. Tractor with loader for your service.

Sale starts at 10:00 a.m. For information contact
C. H. WOLGEMUTH — Sale Manager
Phone 665-5664 — Manheim, Pa.

NITROGEN

SERVICE



WE WILL TOP DRESS YOUR

- Pasture
- Small Grain
- Grass, Hay & Forage

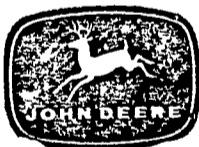
WITH: UREA or Ammonium Nitrate
Make your arrangements now for
spring application

392-4963

ORGANIC PLANT FOOD CO.

GROFFTOWN RD. Next to the Waterworks

The BIGGEST



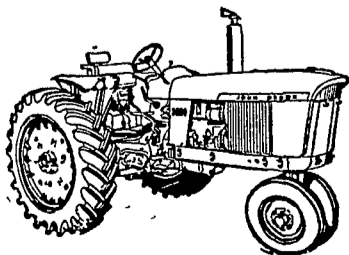
USED FARM EQUIPMENT SALE

OF THE YEAR

NOW GOING ON

At LANDIS BROS., Inc.

PRICED TO SELL!



LANDIS BROS., INC.

1305 Manheim Pike (1 Mile North of Lanc. on Rt. 72)

LANCASTER, PENNA.

PH. 393-3906

HURRY IN!

Many Big

Bargains

Big Selection of

Tractors

- J. D. 3010 R-DSL
- J. D. 2010 RU-DSL
- J. D. A w/adj. front axle
- J. D. B w/cult.
- J. D. L w/plow and cult.
- J. D. MC crawler w/loader
- I.H.C. 350 High Utility
- Farmall C
- Farmall BN w/plow and cult.
- Farmall A w/plow and cult.
- Allis Chalmers WD45



Transfer Milk Efficiently From Cow to Bulk Cooler

The "Sputnick" MILK-PORTER is the cleanest, most efficient method for transferring milk from cow to bulk cooler.

- Manufactured from heavy gauge stainless steel.
- Lid seals tightly to keep milk germ free.
- Passes through openings 29" and over.
- Moves quiet and easily on rubber-tired, ball bearing wheels.
- Does away with long, expensive pipe lines, milk pumps and releaser.
- Two sizes.
- Low-cost sanitizing.

Inquire About Our Lease Plan

Approved for City of Philadelphia

Amos H. Rutt
R. D. 2, Quarryville, Penna.
786-3897