

Group No. 13 of the Society of Farm Women met recently at the Farm Bureau Bldg. auditorium, and entertained the Lancaster County Farm Women officers and Group No. 19. There were 54 members and guests attending.

Among business reports presented were: members made 75 cancer dressings and 20 bed pads in February at the home of Mrs. Cary Brown; flowers were sent to Mrs. Minnie Howard, a member who is

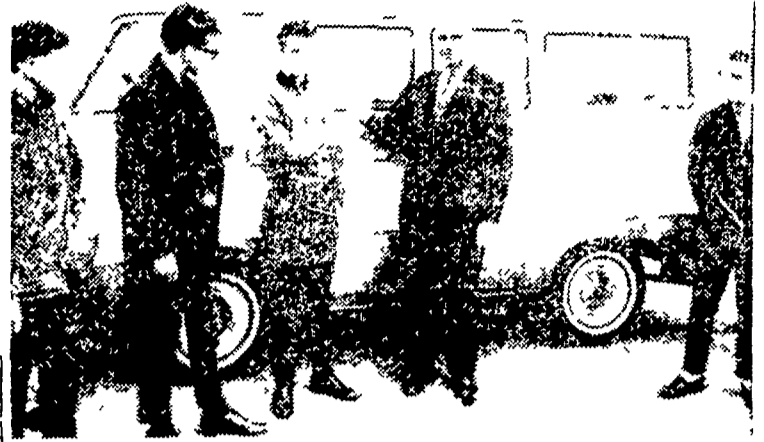
ill; a donation was made to the Society of Crippled Children; donations of food were requested for the bazaar for the benefit of Heart Haven in April; three women volunteered to assist at the bazaar; five members will visit the County Home with refreshments;

Plans were made to sew at the General Hospital on April 6; volunteers were asked to join an auxiliary to the County Home, a letter was read concerning the Society's proj-

ect-of-the-year — the Farm & Home Center.

Mrs. Ada Whitmyer was in charge of the program assisted by Mrs. Gladys High and Ada Miller. Linda Leaman played the trumpet accompanied by her sister, Stella Miss Mary Rutt, a returned missionary from the Congo, recounted some of her experiences there.

The next meeting, April 9 at the home of Mrs. John Bare, will feature a plant and food sale.



THE ELIZABETHTOWN FFA CHAPTER increased their mobility with the purchase of this 8-passenger Dodge station wagon. The vehicle will be used for various FFA class trips and special events, and may get as far away from home next summer as the West Coast. Shown left to right are: Norman Smith, FFA member; Nevin Hiestand, chapter president; Paul Mummau, chairman of truck committee; Ira Peticoff, local Dodge dealer; Ray Ruhl, FFA member.

E'town FFA Buys A Station Wagon For Chapter Travel

Last week the Elizabethtown FFA Chapter took formal possession of the station wagon that will provide chapter transportation to class events and for special trips. Next summer a one-week trip is planned to the National FFA Convention in Kansas City, Missouri, and the graduating seniors will take their traditional four-week trip to the West Coast.

The purchase of the wagon represented the culmination of several years of planning and saving by the chapter. The treasury was built-up so that with the cooperation of the local bank, and with the endorsement of the Kiwanis Club, the purchase became a reality.

The vehicle, a Dodge A-100 Custom Sportsman, has two

bucket seats in the front and two full-width bench seats in the rear. It will carry eight passengers in comfort.

On April 3, a group plans to visit Penn State, and in June another group will attend the FFA judging contest there. The money for these trips comes from the chapter farming program. They farm about 15 acres behind the high school. Last year they had five acres of tobacco, seven acres of corn and three acres of hay. This year they will raise tobacco, sweet corn, and onions. They also plan to grow their own tobacco plants under plastic.

FUELS DANGEROUS

Fuels for model airplanes and other toy engines can be dangerous if mishandled. Labels cautions should be carefully read and followed, and children should be properly supervised when using such fuels.

DAIRYMEN

No Expensive Specialty Feeds

or Additives Needed

when you feed your cows

Green Pastures Dairy Pellets

Important components such as:

Trace minerals

Vitamins

Reproductive capacity

are all built into one quality feed

GREEN PASTURES DAIRY PELLETS

Ask one of our Dairy Specialists to explain our Dairy Program to you and then give it a good try. Performance is the key to low cost. You will be satisfied.



Miller

&

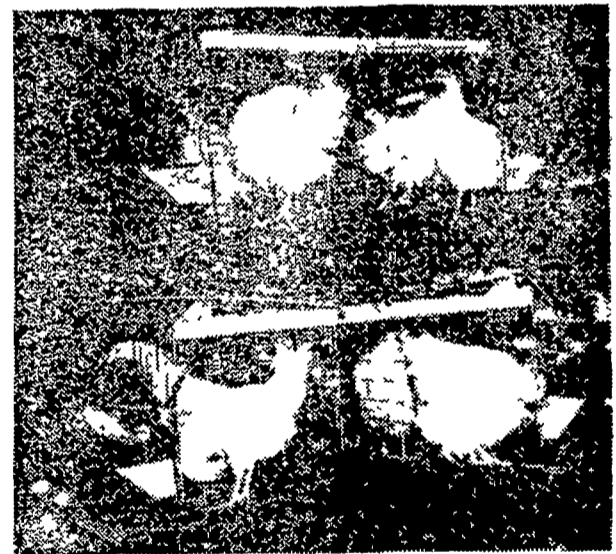
Bushong, Inc.

Rohrerstown, Pa.
Ph. Lancaster 392-2145
(Area Code 717)



"FINEST SERVICE ANYWHERE"

Poultry Equipment Is Our Business



"Cages Are Our Speciality"

E. M. Herr Associates . . . distributors of quality poultry and hog equipment. We sell, service and stock —

Beacon Steel Cages, Brock Bulk Feed Bins, Aerovent Fans, Oakes Mechanical Feeders and Hog Equipment, Herrmatic Feed Carts — Egg and Manure Handling Equipment.

E. M. HERR ASSOCIATES
Willow Street R. D. 1, Penna. Ph: 394-0654