

● Poultry Center

(Continued from Page 1) and Home, he has indirectly been responsible in making a substantial contribution to the fund.

"Know the facts and understand the trends," Ammon tells poultrymen.

After that exciting announcement, the featured speaker's role could have been an anti-climax, but Richard Ammon, executive director of the Northeastern Poultry Producers' Council (NEPPCO), actually managed to quicken the pace with a lively discussion of the future of the southeastern Pennsylvania egg industry.

"The south is the egg basket of the east, and it is now competing for business long held firmly by northeastern producers," the NEPPCO official said. The northeast is now producing about six million eggs less than it is consuming, and the south is about six million eggs over their local needs, according to Ammon.

But the trends are important in a discussion of the future for Pennsylvania poultrymen. Ammon told the gathering of about 80 persons that the rate of growth in the southeast egg industry has slowed significantly. "The southeast moved into our markets on the basis of price-cutting, not by promotion," Ammon said. He reported that conditions down there reflect many of the same problems we have in the northeast: pressure on egg quality; pressure to reduce costs by adapting a business approach to egg production; etc.

"There are vast individual variations in costs of production that are more important than variations in area costs," he told the poultrymen.

Ammon predicted that southeastern Pennsylvania, New York, and part of Ohio will lead the northeast in future egg production because they "are out of the high rent district; are near the best markets; and are able to reduce costs by raising part of their own feed."

He cited the example of New Jersey as a state that will probably not figure in that future. "In 1959 there were 5600 poultrymen in N. J.; there are now about 1200, and I believe that by the end of this year the number will be around 900," Ammon said.

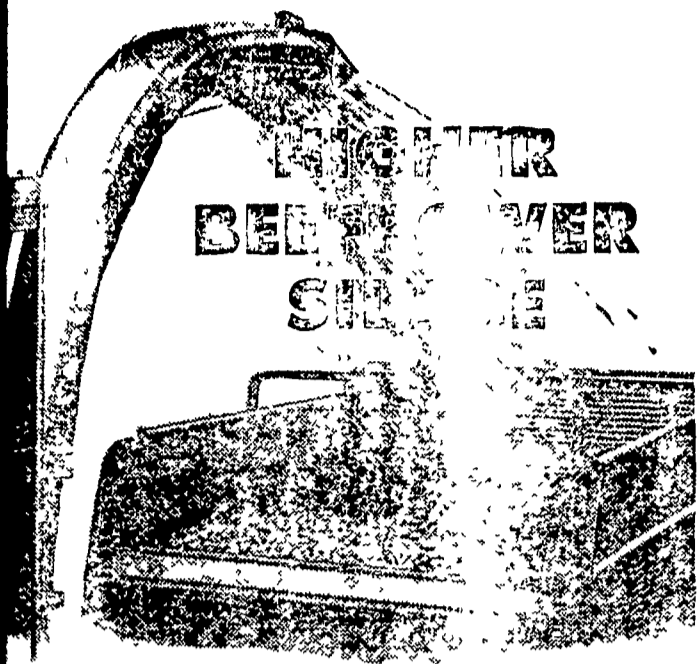
What happens to the northeastern egg producer depends on the course of retailing, and on consumer preferences, he said. He reviewed the accomplishments and aims of NEPPCO, and invited the poultrymen to join the organ-

ization that was at least trying to do something about the egg situation. "NEPPCO is insurance that we will have a poultry industry in the northeast tomorrow," the official concluded.

Also speaking on the program was Dr. L. Dwight Schwartz, Penn State Extension Specialist, who reviewed current disease problems and discussed progress being made in research. He named leucosis the number one disease problem, and predicted that a leucosis breakthrough in piecemeal information should come in the next 3-5 years.

USE WITH CAUTION

Paint removers should be used with caution. They contain ingredients which may be dangerous if improperly used or stored. Federal law requires that they bear warning labels and information to protect the user from harm.



from HIGH CAPACITY FUNK'S G-HYBRIDS

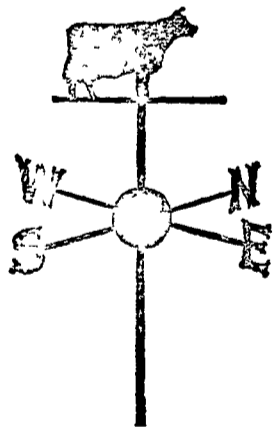


Want higher powered feed — more pounds of beef per acre? The key is High Capacity Funk's G-Hybrids. Top grain yielding Funk's G Hybrids help you produce higher tonnage of nutrients per acre — and higher TDN per ton of silage. Put up higher "beef-power" silage with High Capacity Funk's G-Hybrids.

A. H. Hoffman Seeds, Inc.
Landisville, Pa. Ph: 898-3421

Dairymen everywhere are getting more milk and more butterfat with Ful-O-Pep *Cattle-izer* Dairy Feed

A Lancaster County farmer* reports —
1545 lbs. milk per cow —
4.23% test —
65 lbs. fat per cow during Dec. 1964



A Lebanon County farmer* reports —
1377 lbs. milk per cow —
4.0% test —
55 lbs. fat per cow during Nov. 1964

*Names on request

See what Ful-O-Pep Cattle-izer Dairy Feeds can do for YOUR milk production!

Passmore Supply Co.
Cochranville, Pa.

Grubb Supply Co.
Elizabethtown

Millport Roller Mills
Millport

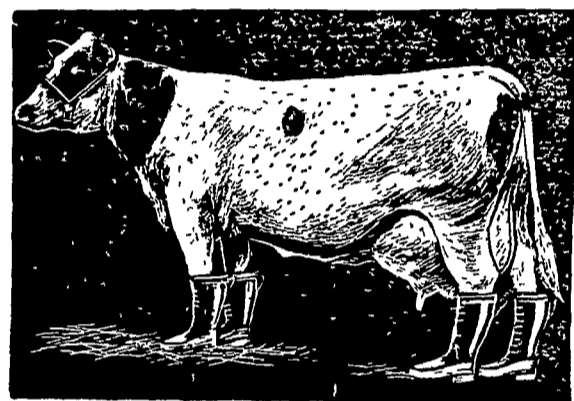
Kirkwood Feed & Grain
Kirkwood

S. H. Hiestand & Co., Inc.
Salunga

H. M. Stauffer & Sons, Inc.
Witmer

J. C. Walker & Son, Inc.
Gap, Penna.

Stevens Feed Mill, Inc.
Stevens, Penna.



A cow with boots . . .

Farmers know that cattle must have dry feet. MARTIN'S BARN-DRI dries damp and wet floors immediately.

MARTIN'S BARN-DRI also helps prevent costly animal loss by reducing slipping when floors are wet.

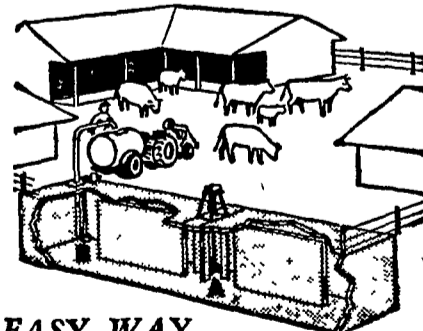
Use MARTIN'S BARN-DRI for all animals — cattle, hogs, horses, chickens, pets, others. Scatter by hand or shovel. Buy by the bag or ton.

Ivan M. Martin, Inc.
BLUE BALL, PA.

Terre Hill 445-3455
New Holland 354-2112
Gap Hickory 2-4148

DAIRYMEN-CATTLEMEN

Here's the answer to your MANURE PROBLEMS



EASY WAY MANURE DISPOSAL SYSTEM

Saves Time—Saves Fertility

Just scrape or wash manure, bedding waste and feed into Easy Way holding tank. When you're ready, the powerful agitator and self-priming chopper impeller pump will put the homogenized mixture into Easy-Way liquid field spreader. No log — no mess — no stink.

For complete information on the EASY WAY DISPOSAL SYSTEM write to:

CALEB M. WENGER

R. D. 1, Drumore Center K18-2116, QUARRYVILLE, PA.