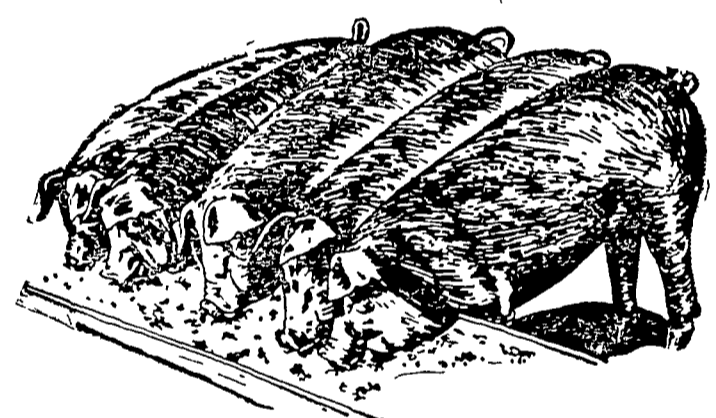


P. B. GUERNSEY DISPERSAL
 Charles G. McSparran, Peach Bottom, Pa., Owner
 Thurs., March 11, 1965 — 12:30 Noon
 At the Ass'n. Sales Pav., Lancaster, Pa.
30 COWS — 12 BRED AND 5 OPEN HEIFERS!
 1964 DHIA Ave. 23.5 Cows — 9,689±M - 478±F.
 Over half the females with records over 9,000 lbs. Milk.
 8 above 11,000 lbs. up to 15,000 lbs. Milk.
 Atlantic Breeders' and Curtiss Candy Blood Lines.
 Many good Fall fresheners in heavy production. 10 due
 right before sale or soon after. A special feature: 11 really
 well bred heifers good size, starting to freshen in August. 5
 by "Top Command" all bred to "Jolly Vern".
SALE MANAGED BY:
 THE PENNA. GUERNSEY BREEDERS' ASS'N.
 P. O. BOX 458 CAMP HILL, PA. 17011

ALL DAY SPRING SALE
MONDAY, MARCH 15, 1965
 Along Route 322 between Ephrata and Clay
9:30 A.M.
 Farm Machinery
 Farm Implements
 Poultry Supplies
 Large Variety of Small New & Used Articles.
 We sell on commission.
**PLEASE BRING MACHINERY
 BEFORE DAY OF SALE.**
 By
ELLIS MARTIN & SONS
 Ephrata 733 6716

**FOR GROWING SHOATS
 AT LOWER COST**



Feed Wayne PIG BALANCER

Syncro-Zymic formulation properly balances farm grains for fast, low-cost growth from 50 to 100 lbs. Arsanilic acid-antibiotic complex improved again for even faster gains on less feed!

Hygromycin for Worm Prevention Optional

Start now to lower costs with Wayne PIG BALANCER



- | | |
|--|---|
| HERSHEY BROS.
Rusholds | POWL'S FEED SERVICE
R. D. 1, Quarryville
R. D. 2, Peach Bottom |
| C. E. SAUDER & SONS
R. D. 1, East Earl | MILLERSVILLE SUPPLY CO.
Millersville |
| J. K. STAUFFER & SON
Lawn and Bellare | MOUNTVILLE FEED SERVICE
R. D. 2, Columbia |
| GRUBB SUPPLY CO.
Elizabethtown | H. M. STAUFFER & SONS, INC.
Witmer |
| ROHRER'S MILL
R. D. 1, Ronks | DUTCHMAN FEED MILLS, INC.
R. D. 1, Stevens |

***** ● **Weaver**



This is a COW just an average cow



This is a BULL bestest of bulls



This is their PROGENY ?

ABC is first in America to take the question-mark out of mating sire and cow for improved progeny and higher milk production.

Call us for more details on the FREE Atlantic Mating Guide service program.



Cy R. King of ABC

ATLANTIC BREEDERS COOPERATIVE

- Lancaster 569 0411
- Akron 859-2552
- Christiana 593 5187
- Manheim 626-2363
- Mount Joy 653-1451
- Quarryville 786 7381
- Strasburg 687-6292

(Continued from Page 1)
 Mae Donough and John Welk. The adult leaders, all re-elected, were: J. Harold Frey; J. Nissley; Elvin Hess, Jr.; Melvin Rohrer; Mylin R. Good; and Fred W. Linton. Other business conducted at the meeting included decisions by the members to: 1) meet on the first Wednesday of each month; 2) donate the Farm Show County Trio check to the club treasury; 3) to keep the club dues the same as last year. J. Harold Frey, Marietta R1, presented information on a group insurance plan that would cover members on all authorized Club activities. It would be available on a voluntary basis at a cost of \$1 per member per year.

Don't miss the ALFALFA AND CORN CLINIC

Town: Lancaster, Penna.
Place: FARM BUREAU MEETING ROOM
Date: Thursday, March 11th, 1965
Time: 7:30 P.M.
 (Refreshments will be served)

Specialists will discuss:
Insect Control on Alfalfa
 • latest control methods for alfalfa weevil
 • control of other insects attacking alfalfa
Weed Control in Corn
 • how to boost yield through effective weed control
 • spray application techniques and equipment
 Question and Answer Session following program
 Sponsored by

Lancaster County Farm Bureau

FARM BUREAU	LANCASTER 394-0541
	NEW HOLLAND 354-2146
	QUARRYVILLE 786-2126

"ANYONE MAY BUY FROM FARM BUREAU"

The BIGGEST 

USED FARM EQUIPMENT SALE

OF THE YEAR

At LANDIS BROS., Inc.

DURING THE MONTH OF MARCH

PRICED TO SELL!

LANDIS BROS., INC.

 1305 Manheim Pike (1 Mile North of Lanc. on Rt. 72)
 LANCASTER, PENNA. PH. 393-3906