

**E. E. BRUBAKER COMPLETE DISPERSAL
THURSDAY, FEBRUARY 25 (Noon)
LANCASTER, PENNA.**

Sale held at the Guernsey Sale Pavilion, 4 miles west of Lancaster on Rte. U.S. 30.

70 REGISTERED HOLSTEINS

(38 Milking age - 18 Bred & Open heifers, 14 heifer calves up to a year old.)
Bang's Certified, T.B. Accred., Calf Vacc., blood & T.B. tested within 30 days. Exam for Preg. and mastitis. Vacc. against shipping fever.

1963 DHR AVERAGE — 28 L. 14,495 M 3.9% 567 FAT!!
THESE TOP PRODUCERS ALL SELL!! 2 with 810 and 895 fat, 2x. 4 with from 713 to 740 fat, 2x. 9 with from 514 to 686 fat, 2x. 6 from 419 to 483 fat, mostly at 2 yrs. 12 on test with 1st calf now. 31 DAUGHTERS SELL BY HARDEN FARMS KING MERIDIAN (VG-87) - (SMT). He is a 3/4 brother to H. F. King Ina (VG-89) with 1019 F., 28,094 M. He is a Silver Medal Type sire with 24 dtrs. ave. 81.3 and 102.2% difference from expectancy. He is by H. F. King Var from H. F. Duchess Ione, former National Champ. with 920 F. at 3 yrs. and sold for \$2650. Some of his dtrs. have the following recs. — 810 F., 740 f., 725 f., 721 f., 686 f., 619 f., & classified to 87 points. You will like these exceptional producers. 14 DAUGHTERS SELL BY OSBORNDALE IVANHOE!! 9 are in milk and all but one are from "Morian" daughters. This is a real opportunity. Other top sires represented — 4 by Skokie Creation; 4 by Skokie Famous Duke; 3 by Mooseheart Pioneer; 3 by Oats Farm Gallant Rag Apple; an 895-lb. dtr. of Curtiss Candy Invincible.

30 HEAD BRED TO HARDEN FARMS DUKE ROCKET!!
He is by Pabst Reburke Duke out of H. F. Duke Jerry (VG-87) with 4 recs 1021 to 1103 Fat. Next dam is the great and famous Man-O-War Mary (Ex-92).

MAKE YOUR PLANS NOW TO ATTEND THIS COMPLETE DISPERSAL!! SALE STARTS 12:00 NOON!!

Farm has been sold, everything must go.

Lunch Available

Catalogs

E. E. BRUBAKER
Owner,
6 Pleasant Drive
Lancaster, Penna.

R. AUSTIN BACKUS, INC.
Sale Mgrs. & Auctioneers
Mexico, N. Y.

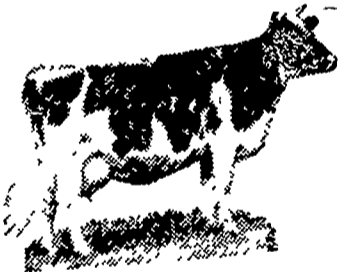
**Springlea Farm
COMPLETE DISPERSAL**

Saturday, Feb. 27, 1965

Will be offered at Public Sale on the premises one-half mile north of Route 340, 14 miles east of Lancaster, and 4 miles west of Route 10, near Spring Garden, Lancaster County, Pennsylvania, the following, to wit:

**60 REGISTERED HOLSTEINS
(7 GRADE HOLSTEINS)**

Certified T.B. Accredited 30-Day Test
1964—D.H.I.A. Average—33 Cows, 15,269 Milk, 601 Fat, 3.9%.
1963—D.H.I.A. Average—14,589 Milk, 554 Fat, 3.8%.



**36 COWS, & 1st.
CALF HEIFERS,
31 HEIFERS**

(11 bred, 20 younger). This is a young herd, most 2-, 3-, and 4-year olds.

THREE WILL SELL WITH OVER 800 FAT — THREE WILL SELL WITH OVER 700 FAT — NINE WILL SELL WITH OVER 600 FAT; EIGHT WILL SELL WITH OVER 500 FAT

SELLING:

- Poplar Lawn Lockhaven Cindy 8 yr. - 355 da. - 20,722 m. - 857 f., 4.1%.
- Daughter of TyVic 6 yr., 354 da. - 19,891 m. - 820 f. - 4%, another record over 700.
- Daughter of Maplebend Dean King Posch 6 yr., 6 mo., 301 da., 20,635 m. - 774 f. Previous record 5 yr., 305 da., 20,356 m., 683 f. 3.4%. Her daughter by Ivanhoe sells, with record at 2 yr., 5 mo. - 340 da. - 14,315 m. - 533 f. - 3.7%.
- Daughter of Regal Lucifer 2 yr. 336 da., 16,368 m. - 604 f. - 3.7%.
- Daughter of TyVic 2 yr. 350 da., 15,275 m. - 600 f. - 3.9%; 3 full sisters by Ivanhoe (which are grades) sell (1) 2 yr., 14,043 m. 628 f. - 4.4%; (2) 2 yr. - 14,566 m. - 461 f. - 3.1%. (The third is younger.)

This is a nearly 100 percent Atlantic Breeders' Cooperative Sired Herd. There are 14 Osbornedale Ivanhoe Daughters, 11 Penstate Lucifer J. TyVic Daughters, 4 Cochran General Daughters, 4 Sequoia Ideal Jo Daughters, 3 Blossomelle Black Gold and others. Don't miss this fine dispersal.

Sale to start at 12:30 p.m., on Saturday, February 27, 1965, when terms will be made known by

Aucts. & Sale Mgrs.
Carl Diller (392-5235)
J. Everett Kreider (BU4-4517)

BENJ. D. HERSHEY
OWNER, Kinzers, R. 1, Penna.

For Catalog write Carl Diller, 1101 Beaver Valley Pike, Lancaster, Pa.

Sale held in a tent Lunch Available

Sale Register

Lancaster Farming, Saturday, February 20, 1965—19

Tues., Feb. 23 at 12 noon, Thursday, Feb. 25, at Noon
Public Sale of New & Used E. E. Brubaker Complete Dis-
Farm Equipment by Allen H. persal at the Guernsey Sales
Matz, Inc. (formerly Snavely's Pavilion, 4 miles west of Lan-
Farm Service) New Holland, caster on Rte. U.S. 30.
Pa. Friday, Feb. 26, 1965 at 12 30

**PUBLIC SALE
OF FARM AND POULTRY
EQUIPMENT**

Saturday, February 27, 1965

AT 12:00 NOON

The undersigned will offer at public sale on the premises located between Clay and Brunneville (near Hammer Creek Mennonite Church), Elizabeth Township, Lancaster County, Pa., the following, to wit:

1960 FORD TRACTOR

No. 671, with Selector Speed, Hydraulic, PTO, etc., like new.

9N FORD TRACTOR

FORD MANURE SPREADER

PTO; used one season, like new.

FORD 2-BOTTOM TRIP PLOW, Disc Harrow, Fodder Shredder, Cultipacker, Spring Harrow, Black Hawk Corn Planter, Weeder, John Deere Corn Sheller, 3-point hook-up, PTO; Weed Sprayer with Myers Pump, like new; 120-gallon Portable Water Tank on rubber; Grain Tank on rubber; Lime Drill, 18-ft. Elevator with 1/2-hp. motor, 220 volt.

**8x16 FT. DAVID BRADLEY WAGON
ON RUBBER**

TWO-WHEEL TRAILER, Fairbanks Platform Scale, Bag Wagon, 15-gallon Drum of Grease with hand pump; Grease Guns, Log Chains, Ropes, 200-ft. 220-volt Extension Cord, Shovels, Rakes, Hoes, Forks, Fountains, Feeders, Crocks, Nests, Buckets; many Chicken Coops; many Egg Baskets, Egg Scales; Used Lumber, ASHLEY WOOD STOVE, PTO Pulley, 6"x46" Belting.

TWO GLIDERS, one Glider and 2 Matching Chairs, like new; HOTPOINT 11 CU. FT. REFRIGERATOR (large freezer chest), and many articles too numerous to mention.

Sale to start at 12:00 noon.

For information call 626-5534.

Terms by

ALVIN W. ADAMS

T. Glenn Horst, Auctioneer, 859-1331

PUBLIC SALE

— of —

**IMPLEMENTS AND
SOME HOUSEHOLD GOODS**

to be held

Friday, February 26, 1965

On the premises located 3 miles Northwest of Mount Joy, 2 miles East of Kountry Kitchen, near Green Tree Church of the Brethren.

1949 Studebaker 1/2 ton Truck with stake body;
1948 Chevrolet Truck with "U" License, "A" Title, in good condition;

Farmall Super "M" with Remote Control; Farmall Super "C", fast hitch; Fast Hitch Cultivator; Fast Hitch No. 100 Grass Mower; Fast Hitch Tool Bar with 5 teeth; Fast Hitch 3-bottom Plow for Farmall; McCormick Deering three 14" bottom Tractor Plow with Remote Control; Farmall "C"; Farmall "BN" with Cultivator and Tobacco Hoers; Henderson Manure Loader; wide front end for Farmall "C"; Allis Chalmers Combine with motor and grain bin; Cunningham Hay Crimper; New Idea 4-bar Side Delivery Rake; New Idea No. 17 Manure Spreader; Ontario 14-disk Grain and Fertilizer Drill; New Idea 10 ft. Lime and Fertilizer Drill; Corn Planter with Fertilizer attachment; McCormick Deering offset Disk on rubber with Remote Control; 2-section Case Spring Harrow; Buch Cultipacker; 2-row Bemis Tobacco Planter on rubber; 3 rubber-tire wagons with 16 ft. beds and sideboards; 5 tobacco wagons with single ladders; Smoker 24 ft. Bale Elevator; Even-Flo Silo Distributor; New Holland #66 Pick-up Baler with motor on and a full line of farm equipment; also Poultry Equipment, and some household goods.

Sale to commence at 12:30 P.M., when conditions will be made known by

ARTHUR B. GANTZ

Dupes and Gerberich, Auctioneers
S. Kraybill and P. Miller, Clerks

Refreshments will be served by
C.B.Y.F. of Green Tree Church of the Brethren.

Public Sale of Imple-
ments and Household goods
on the premises located 3
miles Northwest of Mount
Joy, 2 miles East of Kountry
Kitchen, near Green Tree
Church of the Brethren. Terms
by Arthur B. Gantz.

Sat Feb. 27, 1965 at 12 noon
Public Sale of Valuable Farm
Machinery and Personal Prop-
erty at RD 1, Wrightsville,
Pa., in Lower Windsor Twp.
Terms by Willard C Adams.

Sat. Feb. 27, 1965 at 12:30
P.M., Spanglea Farm Com-
plete Dispersal on the prem-
ises one-half mile north of Rt.
340, 14 miles east of Lan-
caster, and 4 miles west of Rt.
10, near Spring Garden, Lan-
caster County, Pa. Terms by
Benj D Hershey

Sat, February 27, 1965 at
10 30 A.M. Gockley's Equip-
ment Sale at Reinholds, Pa.
Terms by Jacob H Gockley.

Saturday, February 27, 1965
at 12 00 Noon, Public Sale of
farm and poultry equipment
on the premises located be-
tween Clay and Brunneville
(near Hammer Creek Men-
nonite Church), Elizabeth
Township Terms by Alvin W.
Adams

Thursday March 4, 1965 at
9 30 A.M. Public Sale of Penn-
croft Dairy Cattle along road
leading from Rawlinsville to
Holtwood, go West off route
72 at the Hickory, 12 mile
south of Lancaster Terms by
Kauffman Bros. and Kenneth
L Glenn.

Friday, March 5, 1965 at
11 30 A.M. Public Sale of 20
Holstein Heifers and Farm
Equipment located 1/2 mile
west of Pleasant Grove, 3
miles South West of Wake-
field, off Route 72, Fulton
Township Terms by John C.
Long.

**PUBLIC SALE
OF VALUABLE
FARM MACHINERY
AND**

PERSONAL PROPERTY

On Saturday, February
27, 1965 at 12 noon at R.
D. #1, Wrightsville, Pa.

In Lower Windsor Twp. ap-
prox. 1/2 mile south of Eastern
High School on the Spring
Vista Farm. The undersigned
will offer at public sale the
following —

1961 Ford 1/2 ton pick-up
truck with 3/4 ton bed in excel-
lent condition, Massey Harris
44 tractor, Int. 350 Utility tor-
que Amp power steering, two
spring harrows, two discs, Int.
double row corn planter, D.B.
two hole corn sheller, hammer-
mill, 2 drills, two point grass
mower, New Holland rubber
tired wagon, side delivery rake,
potato planter, digger, grader
& cutter, Massey Harris moun-
ted two row corn picker, New
Idea manure spreader, rubber
tire wagon, flat bed wagon
with steel wheels, two point
plow, Sanders manure loader,
cultipacker, circular saw, 2
drum sprayer with orchard
hose attachment — 1 yr. old,
P.T.O. seeder, four 4-hole hog
feeders, hog creep, 10 & 15
hole metal chicken nests, lo-
cust posts, 2 heavy duty dog
houses, endless belt, sauer-
kraut press, sausage stuffer,
crocks, misc. tools, chains, and
many other articles too numer-
ous to mention. Terms: Cash
Not responsible for accidents
on day of sale.

Refreshment Rights Reserved

WILLARD C. ADAMS

Owner

Jacob A. Gilbert, Auctioneer
Phone Red Lion 246-5056
Gilbert, Whitcomb & Frey,
Clerks