

**OPEN HOUSE OF FARMERSVILLE EQUIP. CO.**

Farm families from the surrounding area will be the guests of Farmersville Equipment Company, Oliver farm equipment dealer at Ephrata R2, at an Oliver Farm Fair, on Wednesday, February 24. The open house, from 9 a.m. to 9 p.m. will feature many of the new Oliver farm ma-

chines for 1965, including the new models 1650 and 1850 wheel tractors with certified horsepower.

Open to the general public, free coffee and doughnuts will be served.

Farmersville Equipment Company's Oliver Farm Fair will feature results of Oliver Corporation's "Growing O" field demonstrations, a series of all day field events held on

farms near principal agricultural centers throughout the country.



**County ASCS Office Reports On Program Results For 1964**

A total of 612 farmers enrolled and completed needed conservation practices under the 1964 Agricultural Conservation Program. Practices were completed and costshares paid as follows:

Practice	No. of Farms	Units	Amount
Liming grassland	449	7,089 acres	\$40,194
Establishing permanent grass cover	171	1,831 acres	21,728
Improvement of established cover	106	2,039 acres	22,690
Establishing permanent cover to protect diversions, ditch banks, etc	4	8 acres	142
Establishing winter cover crops	166	3,802 acres	8,007
Contour strip cropping & hedgerow removal	45	1,396 acres	6,947
Clearing & leveling pasture land	2	8 acres	120
Establishing Sod Waterway	6	2,748 feet	710
Constructing Diversion Terrace	6	10,877 feet	1,725
Constructing cropland Terrace	4	5,310 feet	626
Constructing Open Drainage Systems	3	1,771 feet	401
Installing Tile Underdrain	21	30,053 feet	5,330
Planting of Forest Trees	5	28 acres	419
Improving a Stand of Trees	1	4 acres	50
Ponds for Livestock Water	4	4	800
		Total	\$109,889

In addition to the amount paid farmers for establishing the practices, \$3534 of the 1964 ACP allocation was transferred to Soil Conservation Service for technical services required in establishing permanent type conservation practices.

**CONSERVATION RESERVE PROGRAM**

The 18 farms under Conservation Reserve contract earned annual payments of \$12,000 for maintaining 5915 acres in permanent grass or tree cover

**WOOL INCENTIVE PAYMENTS**

The following payments were made in 1964 for wool and unshorn lambs sold during the 1963 marketing year

- 106 producers received \$2,352.53 for shorn wool
- 50 producers received \$606.85 for unshorn lambs

**WHEAT PROGRAM**

309 producers diverted 580 acres from wheat production, receiving \$5,893 in diversion payments and \$51,925 in certificate payments

**FEED GRAIN PROGRAM**

A total of 327 producers enrolled in the 1964 Feed Grain Program, diverting 4,310 acres from corn production, 13 from grain sorghum and 249 from barley for total diversion payments of \$215,299. Additional price support payments of \$18,260 were paid for the 1879 acres of feed grains grown.

**PRICE SUPPORT LOANS**

Wheat — 11 farmers received loans of \$91,587 on 67,552 bushel of wheat stored in local warehouses and 7 farmers stored 4000 bushels on the farm for loans of \$5,039

Corn — 3 farmers stored 5770 bushel of corn on the farm and received loans of \$6,228

**EMERGENCY LIVESTOCK FEED**

Because of drought conditions, the emergency livestock feed program was approved in January, 1964, and terminated May 30, 1964

Under this program, corn from Commodity Credit Corporation stocks was shipped into the county and sold to farmers at 75% of support price, primarily for foundation herds of dairy cattle.

A total of 93,889 bushel was sold for \$104,091.

Lancaster County ASCS Committee

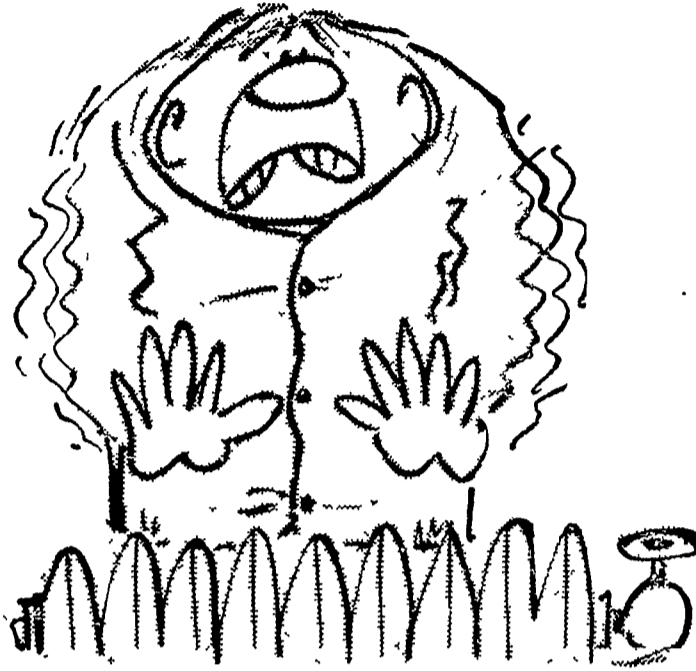
Fred G. Seldomridge

Elmer L. Huber

John J. Heir

Office Manager

Dorothy Y. Neel



NEW RATE AS LOW AS 1¢ PER KWH

**TIME TO CONVERT**

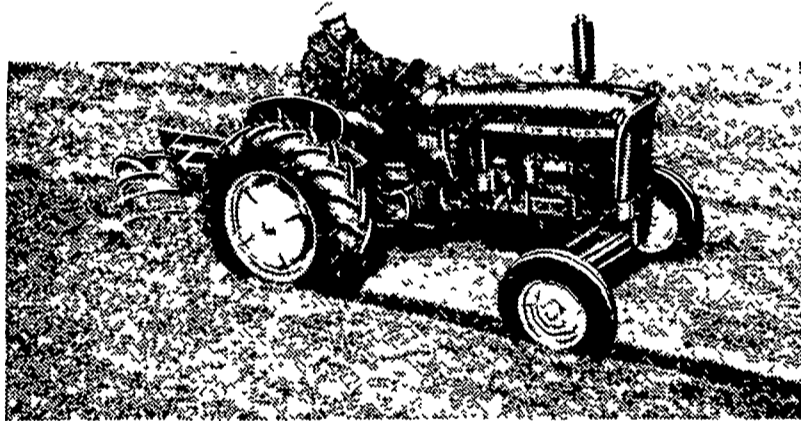
To flameless electric heating comfort

Electric Home Heating dealer today



Great on hills and on the level!

the compact John Deere 1010 Row-Crop Utility



Most-usable 35 h.p. on the market! This "1010" Compact is designed and powered to handle easily any job you ask it to do. Work it on slopes with the security only a low-profile 4-wheel tractor can give. Work it inside and around buildings; it turns short, maneuvers with ease. Cultivate advanced crops with ample clearance. Hustle 2- or 3-bottom plows: drawn, 3-point, mounted, or 540-1000 rpm PTO tools. Throttle down, shift up on light loads; get Variable-Horsepower economy (up to 35 h.p., gas or Diesel). We'll demonstrate. Ask about our convenient and confidential Credit Plan.

Alan Beyer

Christiana LY 3-5687

Landis Bros. Inc.

Lancaster 393-3906

H. S. Newcomer & Son

Mt. Joy 653-3361

Wenger Implement Co.

Buck BU 4-4467

A. B. C. Groff, Inc.

New Holland 354-8001

Shotzberger's

Elm 665-2141

M. S. Yearsley & Sons

West Chester 696-2990

**IF YOU PLANT CORN**

YOU'LL WANT THIS

Ortho Unipel Starter

Fertilizer 13-34-10



- Easy to handle in 50 lb. bags . . .
- Proven performance . . .
- Highest available analysis . . .
- Convenient to store and use . . .
- Most uniform pellet . . .
- Uniform early response . . .
- Higher yields

Also available in bags or bulk  
20-10-10, 16-16-16, 10-20-20

CONTACT US NOW FOR EARLY SEASON

PRICES AND LIBERAL DISCOUNTS.

T.M. Reg. U.S. Pat. off Ortho and Unipel

**P. L. ROHRER & BRO., INC.**

SMOKETOWN

Phone Lanc. 397-3539