

(Continued from Page 14)

with vanilla ice cream. Makes 8 servings.

Cup for dessert? Certainly! Thick fruit soup is a perfect treat for a cold weather day. Sugared and spiced, served so nice served with...

SPICED CHERRY "SOUP-REME"

- 1 1-pound can pitted, tart red cherries
- Water
- 1 cup sugar
- 3 lemon slices, seeded
- 1/2 teaspoon ground cloves
- 2 tablespoons cornstarch
- 2 tablespoons water
- Few drops red food coloring
- 1/2 cup commercial sour cream
- Ground cinnamon

Drain cherries and reserve liquid. If necessary, add enough water to make 1 cup. Pour into saucepan. Add sugar, lemon slices and cloves. Bring to a boil, stirring occasionally. Combine cornstarch and water. Stir into speed cherry liquid. Return to a boil, stirring constantly

Four Lancaster County dealers for the New Idea Farm Equipment Company recently attended dealer introductory meetings for New Idea's new Uni-System line of self-propelled harvesting equipment. These dealers were: Wilbur H Graybill, Lititz R2; Edgar Herr of A L Herr & Bro, Quarryville; Chester K. Long, 127 Front St., Akron; and Ray Longenecker of Longenecker Farm Supply, Rheems.

Part of the introductory meeting at Dayton, O., included a trip to the company's 22-acre factory at Coldwater, O.



Remove lemon slices and blend in red food coloring. Add cherries. Heat thoroughly. Spoon into dessert dishes and garnish with a dollop of sour cream and a sprinkling of cinnamon if desired. Serve with assorted cookies. Makes 4 servings.

4-H Club News

"THE MARRIAGE MACHINE" TO BE ANNUAL 4-H PLAY

By Eric Stoner

4-H Publicity Officer

On Friday and Saturday nights, February 26 and 27, the Lancaster County 4-H Council will present "The Marriage Machine" as their annual play. It is a light comedy in three acts, and will be held in the auditorium of the Hempfield High School at Landisville at 8 p.m.

Tickets may be purchased at the door or from any cast member. Admission is \$1 for adults and 50 cents for children under 12.

The cast is composed of county 4-H members. Principal roles will be played by Glolia Hershey, Janet Groff, Jim Houser, Marie Bushong and Ron Long. Supporting players include: Mary Lou Landis, Mel Breneman, Jay Haverstick, Terry Myers, Carol Ann Hess, Jeff Whitman, Linda Weidman, Jean Stauffer, Nancy Stoltzfus, Joyce Stoltzfus, Larry Antes, and Mike Smucker.

Robert C Schappell, English teacher at Conestoga Valley High School, will direct the play, and Linda Weidman will act as student director.

Committees for the play include: Jay Wissler, tickets and posters; Pat Yunginger, makeup; Larry Weaver and Judy Buckwalter, ushers; Eric Stoner and Linda Young, publicity.

This annual event helps finance the various countywide activities which are planned through the 4-H Council.



For the Farm Wife and Family

Ladies, Have You Heard? . . .

By: Doris Thomas, Extension Home Economist

First-Aid Care Tips For Wet Shoes
Remove wet shoes as soon as possible. Use a soft brush or towel and gently remove loose dirt from shoes, then stuff shoes with crushed newspaper or tissue. Stuff clean down to the toes. Place shoes where they will dry slowly — keep away from direct heat.

When shoes are completely dry, polish leather with a shoe paste. If the leather is stiff or moisture spotted, soften it with saddle soap before polishing.

Dry suede shoes slowly, then brush gently with suede brush. Sometimes fine sandpaper is more effective for working up the nap on badly worn spots, but work gently if you use sandpaper.

See that galoshes and rubbers are clean on the inside so smudges of soil won't get on clean shoes.

Make the Most of Vacuum Cleaner Attachments
Attachments that come with your vacuum cleaner are designed to make cleaning easier and more thorough.

The upholstery tool makes quick work of cleaning mattresses, the sofa, and big chairs. It also works well on draperies and curtains. With some vacuum cleaners you can reduce the suction when cleaning draperies.

With the crevice tool, you can get all the way into the corners of drawers and pick up dust in the space beside the range and behind the refrigerator.



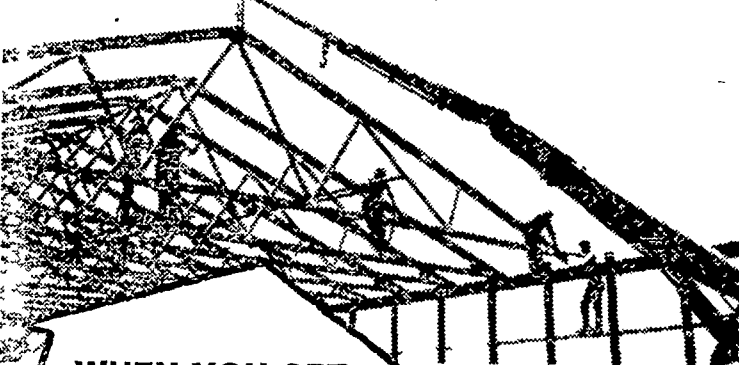
THOMAS

Use it also on the edge of wall-to-wall carpet. The dusting tool will clean lampshades, the grate in back of the television set, and tops of windows and baseboards. Use the floor brush or floor and rug nozzle to clean hardwood, tile, and linoleum floors. The attachment confines the dust in the cleaner dust bag instead of scattering it when you use a dry mop or a broom.

NEW TOBACCO GROWING CIRCULAR AVAILABLE

Pennsylvania State University has recently published Circular 516, "Growing Tobacco Plants." It contains the latest information available, and covers the subject from seed to field-setting.

Single copies of this Circular 516 can be obtained by writing the Southeastern Field Research Laboratory, Box 308, Landisville, or from the County Agent's office.



WHEN YOU GET TO THE TOP DO IT faster, easier, and for less money with **STAUFFER HERCULES Roof Trusses**

Putting up a barn? Equipment shed? Poultry house? When you get to the top save money, time, effort and materials, yet add strength and extra room with Stauffer/Hercules engineered wooden roof trusses. We transport them to your farm building site, set them in place with our hydraulic loader speedily and with a minimum of human effort. Self supporting Stauffer/Hercules roof trusses need no bearing partitions, permit extra floor space for greater storage. Before you top that next new farm building think economy — think quality. Think Stauffer/Hercules engineered roof trusses. For details, call

H. M. Stauffer & SONS, INC.
LEOLA Phone 656-2811

Mark (X) YOUR CALENDAR

THURSDAY, MARCH 4th
31st ANNIVERSARY SALE

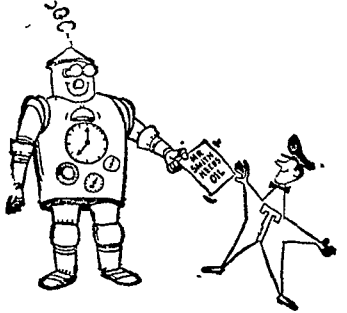


SPECIAL DISCOUNTS
VALUABLE DOOR PRIZES
LANCASTER COUNTY FARM BUREAU

Lancaster	New Holland	Quarryville
394-0541	354-2146	786-2126

"Anyone May Buy From Farm Bureau"

SUPER Self Service SHOES
220 W. King St.
Lanc Co.'s Largest Shoe Store
All 1st Quality Super Low Prices



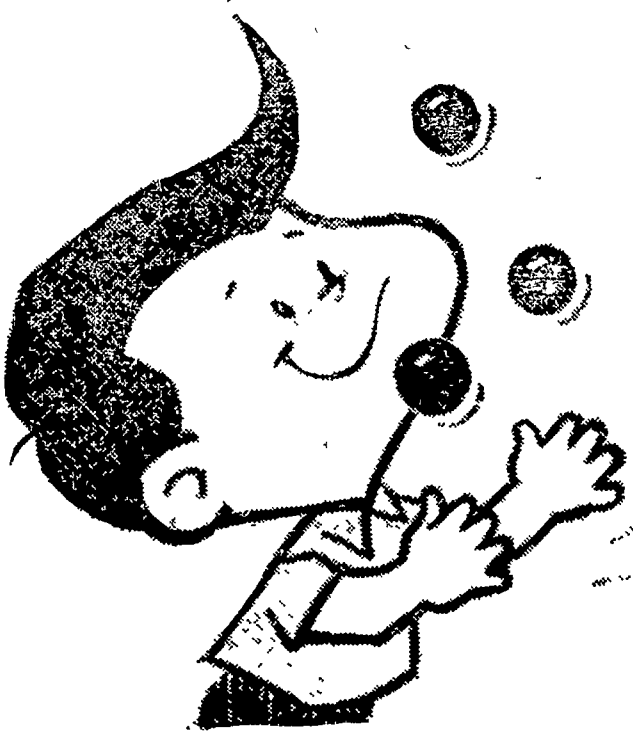
Automatic deliveries!

We keep a chart of your "degree day" needs, based on daily temperatures. In this way, we know when you need oil, and make delivery without your call. You never run short of Texaco Fuel Chief Heating Oil.

We Give S & H Green Stamps

GARBER OIL CO.

Distributor
Texaco Fuel Chief Heating Oil
MOUNT JOY, PA.
Ph. 653-2021
105 Fairview St.



JUGGLING FINANCES?

consolidate bills with an installment loan

FULL SERVICE National BANK

PENN SQUARE • FISHERS • HAZELTON • PITCHBURG • ...
AKRON • GAY • MARSHFIELD • ...