

Weekly Broiler Report

Placements Increase 15 % from a year ago. Placements of broiler chicks in Penna. during the week ending Jan. 30 totaled 870,000 according to the Penna. Crop Reporting Service. The placements increased 15 % from the previous week and 30 % from a year ago. Settings for broiler chicks totaling 1,293,000 declined 14% from the previous week but increased 2% from a year earlier. The current 3-week total of eggs set increased 16% from last year. Inshipments of broiler-type chicks during the past 10 weeks totaled 269,000 or 46% below the comparable period in 1963-64. Outshipments (2,218,000) were about 10% above the comparable period a year ago.

Placements in the 22 major producing states totaling 41,286,000 chicks increased 4% from the previous week and 9% from a year earlier. The 10-week total increased 3% from last year. Settings of 57,980,000 remained about the same as the previous week but increased 6% from a year ago. The 3-week total increased 8%

Eastern Pa. & N.J.

Demand for light type hens light in New Jersey, fair in Eastern Penna. Offerings no more than adequate in both sections. Prices were as much as 1¢ higher since last Friday's report. Supplies of heavy type hens barely adequate for a no more than fair demand. Few flocks sold at farm for 19¢. Limited lots of 5-6# hens brought 10¢ delivered to the dressing plants. Prices paid at farms: Light type hens 4-6 mostly 4½¢; heavy type hens, too few sales to report prices.

Fogelsville

(Prices for dock weights, ¢ per lb. except where noted.)

Hens, light type 4½-7, 5; hens, heavy type 8½-20½, 12-18; Pullets 22-28; Roasters 24-28½; Capons 32½-33½; Ducks 19½-35, 28½-31; Drakes 24½-39, 32-39; Geese 23½-29½; Turkeys, toms 19-25; Turkeys, hens 26-31½; Rabbits 33-51, 38-44; Guineas 45-52½; Pigeons (per pair) 62½-80, 62½-72½; Jumbo Squab 85. Total coops sold 835.

The Delmarva live broiler and fryer price advanced slightly with a fair demand for light auction offerings.

Estimated slaughter for Friday and Saturday is 725,000 head compared with 624,000 head last weekend.

Prices paid and reported purchases for the 24-hour period ending 10 30 a.m. Friday: broilers and fryers, 15.1-17.1; 800,200 head, including 338,900 head purchased of 342,000 head offered at Eastern Poultry Growers Exchange Thursday.

Twenty-five per cent of broiler sales were at 16.5-16.9 cents per pound.

The Delmarva broiler-feed ratio for the week ending 1/29/65 was the same as for the preceding week at 3.3. Average mash price was \$103.97 and broilers averaged 17.01 cents per pound.

Lanc. Lvstck. Exchange Reelects All Officers

The Lancaster Livestock Exchange this week reelected its present slate of officers to their fourth consecutive one-year terms.

Robert S. Heilbron, partner in Samuel L. Heilbron and Sons livestock brokerage firm, is president of the 10-member governing body of Lancaster Union Stock Yards.

Also reelected were James C. Dunlap, vice president, Robert F. Johnson, treasurer, and Walter M. Dunlap Jr., secretary.

James and Walter Dunlap Jr., are president and vice president-secretary respectively of Walter C. Dunlap and Sons, Inc. Johnson is secretary-treasurer of the Johnson Cattle Co.

Weekly New York Egg Mkt.

From Monday, February 1st to Friday, February 5th

	Mon.	Tues.	Wed.	Thur.	Fri.
WHITE					
Ex Fcy. Hywts.	31	31	31	31	31
Fcy. Hywts	30	30	30	30	30
Fcy. Med.	26	26	26	25 25½	25½
No. 1 Med.	25	25	25	25	25
Pullets	24	24	24	24	24
Peeweese	19½	19½	19½	19½	19½
BROWN					
Ex. Fcy. Hywts.	32½	34	34	34	34
Fcy. Hywts.	30	31½	31½	31½	31½
Fcy. Med.	27	27	27	27	27
Pullets	25	25	25	25	25
Peeweese	19½	19½	19½	19½	19½
MIXED					
Fcy. Hywts.	30	30	30	30	30
Standards	28	28	28	28	28
Checks	21-21½	21½	21½	21½	21½

TREND: Market in good balance on large eggs, extra large and jumbos closely cleared. Mediums still a bit irregular.

Copyrighted 1964 By Urner-Barry Co.

● New Holland

(Continued from Page 2)
190; killers, 6-6½ cents per pound Pony mares brought 30-85; geldings, 20-85.

Hog receipts totaled 394 head at the Feb. 1 sale and sold steady. Market animals retained for 19-20 50, wholesale (US 1-3), 18-18 75; heavy-weights, 17 50-18. Sows brought 12.50-16.50.

Calf receipts of 105 head sold steady at the Feb. 1 sale. Choice and Prime brought 37-40; Good and Low Choice, 33-36; Standard, 29.50-32 50; Common, 15-25

● Chicago

(Continued from Page 2)
week but considerably below a year ago. Prime around 8 percent of the steer run with Choice 65, balance mostly Good, year ago 11 percent Prime and 71 percent Choice. Average weight of steers same as last weeks 1161 lbs but well below 1199 lbs a year ago. Average cost of steers estimated 23 75 this week compared with 23 86 last week and 21 78 a year ago. Heifer supply Good and Choice with High Choice and Prime limited.

Feeders. Load Good and Choice 753 lb steers 20 75, part load Choice 540 lb heifers 18 25

Mark (X) YOUR CALENDAR

THURSDAY, MARCH 4th

31st ANNIVERSARY SALE

1934

FARM BUREAU

1965

"Anyone May Buy From Farm Bureau"

Lancaster
394-0541

New Holland
354-2146

Quarryville
786-2126

IF YOU PLANT CORN

YOU'LL WANT THIS

Ortho Unipel Starter

Fertilizer 13-34-10



- Easy to handle in 50 lb. bags . . .
- Proven performance . . .
- Highest available analysis . . .
- Convenient to store and use . . .
- Most uniform pellet . . .
- Uniform early response . . .
- Higher yields

Also available in bags or bulk
20-10-10, 16-16-16, 10-20-20

CONTACT US NOW FOR EARLY SEASON
PRICES AND LIBERAL DISCOUNTS.

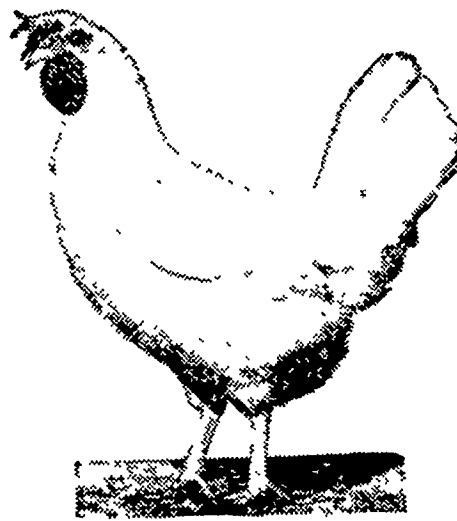
T.M. Reg. U.S. Pat. off. Ortho and Unipel

P. L. ROHRER & BRO., INC.

SMOKETOWN

Phone Lanc. 397-3539

POULTRYMEN!



Do you want a more profitable layer operation?

Here is a winning team!

- Wirthmore Hi Energy 17% Layer Mash (A complete feed)

- Wirthmore Medicated Quickies (in times of stress)

A highly nutritious feed with added antibiotics.

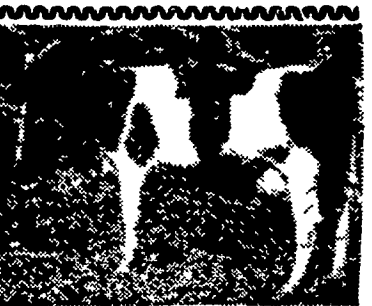


Paradise Supply

Paradise
687-6292

J. K. Stauffer & Son

Lawn and Bellatre
665-3121 — 367-2321



This Cow Produces A Lot Of Milk!

She is a 3061 Sequoia daughter with these outstanding production records (actual - 2X):

2- 6y 365d 19,318 763
3- 8y 330d 22,082 904
4-10y 305d 22,801 818

Service to her sire is available daily by calling —

Lancaster 569-0411
Akron 859-2552
Christiana 593-5187
Manheim 626-2363
Mount Joy 653-1451
Quarryville 786-7381
Strasburg 687-6292

ATLANTIC BREEDERS COOPERATIVE