

# Lancaster Farming

VOL. 10 NO. 8

Lancaster Farming, Saturday, January 23, 1965

\$2 Per Year

## "Weatherman" Shines On DHIA Annual Banquet

The featured speaker at the Red Rose Dairy Herd Improvement Association annual banquet, U.S. meteorologist from the Harrisburg Station Mart G. Baldwin, gave an entertaining talk in his South Carolinian drawl to about 420 dairymen and wives at the Host Motel on Thursday.

Baldwin described some of the tools of his trade that enabled his Bureau to predict the weather as accurately as they do. He also explained some of the variables they have to contend with that cause their predictions to sometimes be less accurate than might be desired.

Five new directors were named to three-year terms. These were: Assn #6 — Daniel S. Stoltzfus, Mount Joy R1; Assn #9 — Leroy K. Stoltzfus, Narvon R2; Assn #12 — Clyde W. Martin, East Earl

(Continued on Page 12)



FURRY H. FREY, 1343 Gypsy Hill Road, shows FOUNTAIN HILL, NINA (23,560m 1,118f 4.7%). Frey's Spring Belle Farm herd produced an all time high average of 711 lb. of butterfat during the county DHIA 1964 testing year. It was second of only three herds in Pennsylvania over the 700 lb. mark.

L. F. Photo.

## Furry Frey, Top County DHIA Herd, Attributes Success To Feed Program

by Everett Newswanger  
Staff Reporter

For the first time in the history of the Red Rose Dairy Herd Improvement Association, a Lancaster County dairy herd has exceeded 700 pounds of butterfat Furry H. Frey, the owner of the record-breaking herd feels the secret of high

production is locked in the feed.

Furry feeds grain twice a day at the rate of one pound of grain to three pounds of milk produced. He never feeds any one cow more than 3/2 lb. of grain a day.

The feed ration, based on a mixture of home grown grain and a 16 percent supplement, is weighed for each cow every day. Frey also uses crimped oats and his own formulated "Tasty mix," for variety.

Hay is fed up to seven times a day to make sure these Holsteins have "all they can eat".

(Continued on Page 7)

## Tobaccomen Get Quota Info From USDA Officials

About 35-40 tobacco growers and industry men heard several USDA officials discuss the tobacco allotment-quota situation on Thursday at the Lancaster County Farm Bureau Co-op Assn auditorium.

Claude Turner, USDA tobacco branch, told the group that the history of the quota program has shown it to be effective in maintaining supplies at levels at which growers could make a profit. The tobacco quota program is one of agriculture's best, Turner said, and operates at little cost to the taxpayer.

He presented charts which showed that since 1958 there had been a general increase

## Eggs Need To Be "Sold", Official Tells Poultrymen

About 40 members of the Lancaster County Poultry Association heard Edward Lawless, Chief of Inspection, Egg & Poultry Division, Pa. Dept. of Agriculture, extoll the virtues of their product and condemn the lethargy of individuals in their industry Thursday night at the Poultry Center.

Everyone talks about the

(Continued on Page 9)

## Farmers Assn. Endorses Fight To Amend Reapportionment Ruling

"Reapportionment will be the major issue tackled by the 1965 Pennsylvania General Assembly," stated J. Roy Greider, chairman of the Lancaster County Farmers' Association's legislative committee on state affairs. Meeting at Lancaster, January 18, 1965, the legislative committee of the Lancaster, Chester and Lebanon County Farmers' Associations studied the effect on Pennsylvania of the U.S. Supreme Court's "One man one vote" formula and initiated action for a U.S. Constitutional amendment.

At least 12 counties will lose their representative, Greider pointed out, if Pennsylvania's House is apportioned according to the U.S. Supreme Court's decision that a county could be denied representation if it did not have enough people to justify a representative according to the apportionment formula. "The following counties," said Greider, "based upon a PFA analysis, would be forced to share

a representation with another county: Cameron, Forest, Fulton, Juniata, Montour, Perry, Pike, Potter, Snyder, Sullivan, Union, and Wyoming

An additional six counties would probably lose their

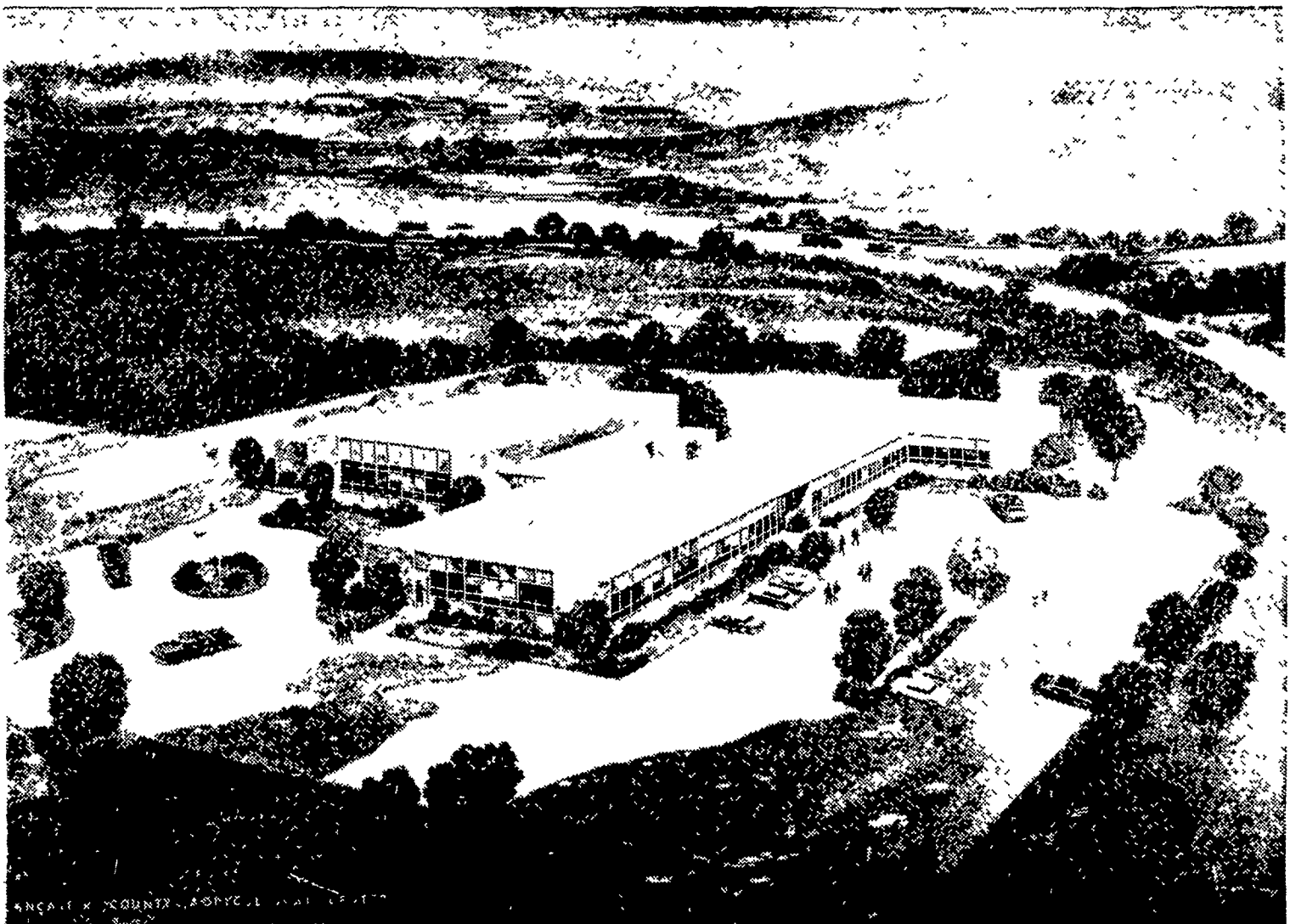
(Continued on Page 11)

At their regular meeting this week the Lancaster County Soil and Water Conservation District Directors met with the Program Committee for the Annual Meeting to discuss plans for that event.

(Continued on Page 10)

(Continued on Page 12)

## ARCHITECT'S SKETCH OF PROPOSED LANCASTER COUNTY FARM & HOME CENTER



## Farm Calendar

Jan. 25 — through the 27th Pa Veg Growers' and Canners' Fieldmen Educational Conf at Penn State University.

— 7:30, 4-H Tractor Club at Farmersville Equip. Co.

Jan. 26 — 7:29 p.m. Garden Spot Young Farmers Class, "Law for Pa Farmers", Speaker, James Weaver, Attorney, at Garden Spot H.S.

— 7:30 p.m. 4-H Central Tractor Club at N. G. Hershey & Son, Manheim.

Jan. 27 — 7:30 p.m. Manheim

(Continued on Page 15)