

**Keystone Awards**

(Continued from Page 7)  
 Chapter in 1963, and placed third in the Solanco Fair Rural Youth Contest in 1963. William placed first in the local and area Land Judging Contest in 1963 and '64, and received the bronze medal in the State Land Judging Contest in 1964.

After graduation he plans to enter the Dairy Husbandry School at Penn State University.

**DONALD H. HERR**

The 18-year old son of Mr and Mrs Harry G Herr, 2125 South View Road, Lancaster, is a senior at Lampeter-Strasburg High School.

He is secretary of the Garden Spot FFA chapter, and a member of the Chapter Procedure Team. He earned the Red Rose Degree in 1963, a silver medal in the State Record Book Contest in 1962, and the FFA Foundation Award for Crop Farming. He also served as Chapter Delegate to Inter-State Milk Producers Convention in Philadelphia.

His farming programs have included: tobacco, steers, corn, and dairy.

**CHARLES H. CRAIG III**

A 1964 graduate of Solanco High School, he is the 18-year-old son of Mr. and Mrs. Charles H. Craig, Jr. of Nottingham R2.

On the 900-acre home farm he works with 130 milking cows and crops. He was the 1963 chapter delegate to the Inter-State Milk Producers Annual Meeting.

He was the 1964 winner of the Farm Women Rural Youth Award, the 1964 DeKalb Award, and also in 1964 he was Chapter Star Farmer.

**JAMES R. ESBENSHADE**  
 A 17-year-old senior at So-

lanco High School, James is the son of Mr. and Mrs. Milton A. Esbenshade, Quarryville R2.

He currently holds the post of sentinel of the Solanco FFA Chapter, and has previously served as assistant reporter and assistant chaplain.

He received the award for Chapter Crop Farmer in 1964, and a purebred Ayrshire calf as county winner in the Lam-

peter Fair Purebred Cattle Contest in 1963.

James has won many local and county tractor driving contests in the past three years. He has been active in local, regional, and state junior dairy shows, receiving many blue ribbons with his purebred Ayrshires.

After graduation he plans to help operate the 300-acre (Continued on Page 9)

**Show Schedule (Cont.)**

- 2 30—Duroc Sale—Small Arena.
- 3 30—Pennsylvania Jersey Cattle Club Meeting, Office No 2, Large Arena.
- 3 30—Pennsylvania Polled Hereford Association Meeting, Room D, Main Show Building
- 4.00—Shorthorn Breeders' Association—Room C, Main Show Building

**WEDNESDAY EVENING, JANUARY 13**

- 7 00—Pennsylvania Brown Swiss Cattle Breeders' Association, Room E, Main Show Building.

**Special Events**

- 5 30—Light Weight Horse Pulling Contest—Large Arena.
- 7 30—Heavy Weight Horse Pulling Contest—Large Arena.

**THURSDAY MORNING, JANUARY 14**

- 8 00—4-H Club Breeding Sheep—Small Arena.
- 9 00—4-H Club Potato Grading Contest—9 00 to 11 30 a m and 1 00 to 4 00 p m—Room E, Main Show Building.
- 10 00—Nut Growers' Association Meeting, Office No. 2, Large Arena, Second Course
- 10 00—Christmas Tree Growers' Association Meeting—Holiday Inn, New Stanton, Penna.
- 10:00—Judging 4-H Club Shorthorns— a Lighter weight, b Heavier weight.
- 10 30—Hampshire Sale—Small Arena.
- 10 30—Judging 4-H Club Herefords— a Light weight, b Medium weight, c Light heavy weight, d Heavy weight.
- 11 45—Judging 4-H Club Angus— a Light weight, b Medium weight; c Light heavy weight, d Heavy weight.

**THURSDAY AFTERNOON, JANUARY 14**

- 12 30—Yorkshire Sale—Small Arena
- 1 00—Nut Growers' Association reconvenes, Office No 2, Large Arena, Second Course.

- 1 00—Pennsylvania Crop Reporting Service, Room A (Auditorium), Main Show Building.

- 1 30—4-H Beef Trials—Large Arena
- 2 00—4-H Club Baby Beef Showmanship Contest—Large Arena
- 2 30—Spotted Poland China Sale—Small Arena.
- 2 45—Breed Champions and Grand Champion Steer.

**THURSDAY EVENING, JANUARY 14**

**Banquet**

- 6 00—Potato Growers', Zembo Mosque, 3rd & Division Streets

**Special Events**

- 4 30—4-H and FFA Tractor Driving Contests—Large Arena
- 6 00—4-H Members helping with Livestock Parade, Room B, second floor, Main Show Building
- 6 00—Judging Market Wethers—Small Arena.
- 6 30—Judging 4-H Market Lambs—Small Arena
- 7 00—Penna Swine Co-operative Breeders Executive Committee Meeting—Room D, Main Show Building.
- 7 00—Livestock Parade—Large Arena. Six-Horse Hitch Demonstration.
- 7 00—4-H Sheep Blocking and Grooming Contest—Small Arena.
- 8 00—4-H Club Light Horse Demonstration—Large Arena
- 8 00—Judging Grand Champion Pen of 4-H Club Lambs—Small Arena.

**FRIDAY MORNING, JANUARY 15**

- 9 00—4-H Lamb Fitting and Showmanship Contest—Small Arena.
- 10 00—Christmas Tree Growers' Association Meeting—Holiday Inn, New Stanton, Penna.

**FRIDAY AFTERNOON, JANUARY 15**

- 1 00—Sale of 4-H Club Baby Beeves and 4-H Club Lambs, followed by sale of open class market wethers and steers—Large Arena.
- 6 00—Farm Show Closes.

QUALITY SERVICE

MONOLITHIC

and

CONCRETE STAVE

SILOS

TERRE HILL SILO CO.

INC.

TERRE HILL, PA.

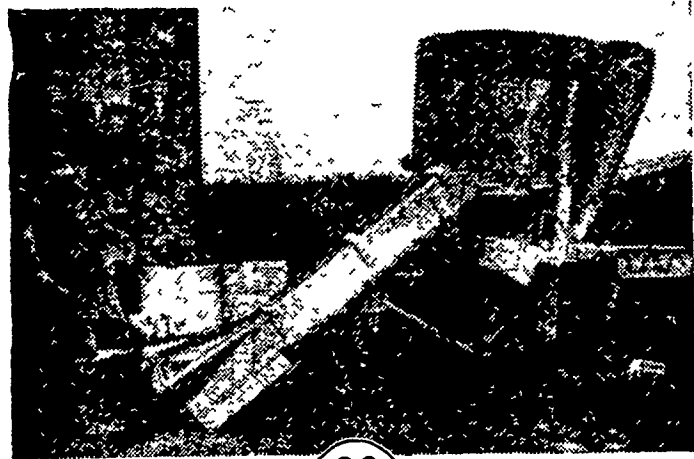
Phone 445-3911

SINCE

1927

See us at the Farm Show Booths 280 and 281

**COMPARE CAPACITY**



20

**Owatonna Gives You a Full 20-inch "Power-Mizer" Mill**

Compare grinding capacity of the Models 85 or 95 Owatonna Mixer-Mills with any other portable unit. You get a full 20-inch "Power-Mizer" hammer mill, a 12 belt (3-V) drive system. You get four-way reversible hammers, optional screens, governor control that regulates the drag feeder and/or feed roll. You just plain get MORE MILL when you own an Owatonna.

**How Owatonna Leads:**

- Most versatile unloading auger built
- Direct mill-to-mixer auger
- Wider, 24-inch mixing base cuts bridging
- 12-belt drive system, #60 chain
- Governor controls drag feeder and/or feed roll
- Big capacity, 20-inch "Power-Mizer" hammer mill
- Many other important features we will show you

We have an Owatonna Mixer-Mill ready to go to work—call for a demonstration on your farm!



**R. M. BRUBAKER**

SALUNGA, PA.

See It On Display at the Pa. Farm Show

**NEW WAYNE LOW-COST**

Now you no longer need to pay for higher protein levels than your layers are capable of using as they move through the phases of the production cycle. The new Wayne Low-Cost Phase Layer Feeding plan allows you to feed your layers what they need . . . when they need it. It keeps production and quality up, reduces your feeding costs by adjusting the protein requirements to meet the conditions in your flock . . . and it works for both cage and floor operations.

**phase**

**LAYER FEEDING**

SEE US TODAY FOR DETAILS



**MILLERSVILLE SUPPLY CO.**  
 Millersville

**C. E. SAUDER & SONS**

R. D. 1, East Earl

**HERSHEY BROS.**

Reinholds

**ROHRER'S MILL**

R. D. 1, Ronks

**MOUNTVILLE**

**FEED SERVICE**

R. D. 2, Columbia

**GRUBB SUPPLY CO.**

Elizabethtown

**DUTCHMAN FEED**

MILLS, INC.

R. D. 1, Stevens

**J. K. STAUFFER & SON**

Lawn and Bellaire

**POWL'S FEED SERVICE**

R. D. 1, Quarryville

R. D. 2, Peach Bottom

**H. M. STAUFFER**

& SONS, INC.

Witmer