

## Pa. Agr. Dept. Completes Move To New Quarters

Complete occupancy of the new \$2.9 million State Department of Agriculture Building adjacent to the Farm Show complex was accomplished last week.

For more than two months various branches of the department have been moving piecemeal from scattered downtown locations as space became available in a delayed program of completion.

The entire department is now operating at full force in the new 4-story red brick and white stone trimmed, air-conditioned building at 2301 North Cameron St. It stands along a new 4-lane highway which has a pedestrian underpass to the Farm Show Building.

The move marks the first time in nearly 70 years of its

existence that the Department of Agriculture has had its own "home."

Secretary Bull said the new facility will provide for more efficient services to farmers and the general public in enforcement of more than 50 state statutes and carrying out the department's many other duties.

## Poultry To Account For Over 20 Percent Of All Pa. Farm Show Entries

Poultry again will be the largest single division at the Jan 11-15 Pennsylvania Farm Show, accounting for more than 2,500 of an expected 11,000 total entries, according to Horace L. Mann, Farm Show director.

Included will be chickens, bantams, turkeys and waterfowl, also 4-H Club, vocational and capon classes.

Closely allied to the main poultry show will be exhibits of baby chicks and poults, eggs and dressed turkeys.

H. Mann said poultry and related exhibits will compete for a total of \$7,680.50 in cash prizes. In addition, the Farm Show Commission will make a number of special awards of walnut plaques to the various championship winners.

Plaque recipients will include the champions in a special state meet of the American White Leghorn Club.

Experts in poultry and related fields from Pennsylvania and neighboring states have

been named by the Farm Show Commission as judges in these departments.

## Home Econ Girls Plan Homemaking Feature At Penna. Farm Show

During the first three days of the 1965 Pennsylvania Farm Show, starting Monday, Jan. 11, 100 girl home economics students will stage a series of 20-minute demonstrations of modern homemaking practices. They will come from 26 high schools in 14 counties.

Their entries were certified to Horace L. Mann, Farm Show director, by Mrs. Clio S. Reinwald, coordinator of homemaking education, State Department of Public Instruction.

Mrs. Reinwald, state adviser for the Pennsylvania Association, Future Homemakers of America, said the demonstrations will alternate with agricultural programs to be given by Future Farmers of America boys, all in Auditorium A.

Themes for the girls will range from pre-school children's toys to modern use of electricity in the home. They will compete as teams of four or less, and will be eligible for \$395 in prizes that range from \$30 (for 10th place) to \$65.

Lancaster County will be represented by girls from Solanco Jr-Sr High School, Quarryville; the teacher supervising the county entry is Anne K. Whitmore. The topic is "Party Ideas For Valentine's Day".

## County Holstein

(Continued from Page 1)

in 1965." The county club now has 511 members.

Any Holstein breeders interested in joining the association are requested to contact Hess or one of the county board members.

Buyer of Oak, WALNUT, Poplar, ASH, etc.  
C. J. CHARLES LUMBER  
New Providence, Pa.  
Phone ST 6-3108

## Weekly New York Egg Mkt.

From Monday, December 28th to Friday, January 1st

	Mon.	Tues.	Wed.	Thur.	Fri.
<b>WHITE</b>					
Ex Fcy Hywts	38	35 35½	32-32½	32	
Fcy Hywts.	35½	34	31½	30	
Fcy Med	28-29	27	26	25 25½	
No 1 Med	28	26	25	25	
Pullets	26½	25	24	23	
Peewees	22	21	20	19	

<b>BROWN</b>					
Ex Fcy Hywts	40	39	36	36	
Fcy Hywts	36½	36½	33½	33½	
Fcy Med	31	29	28	28	
Pullets	27½	26	25	24	
Peewees	22	21	20	19	

<b>MIXED</b>					
Fcy Hywts	35½	34	31½	30	
No. 1 Med	28	26	25	25	
Standards	30-31	30-31	29	28	
Checks	25	25	24	24	

TREND Market continues weak in most quarters as buyers hold off and offerings continue more than ample.

Copyrighted 1964 By Urner-Barry Co.

## PATZ

Sales & Service

Barn Cleaners - Silo Unloaders - Cattle Feeders

Robert K. Rohrer

Quarryville, R. D. 1  
Hensel KI 8-2559

BUY NOW AND SAVE

Take Advantage of

## OUR WINTER DISCOUNTS

WINTER FERTILIZERS  
NEED NOT BE TAKEN BEFORE FEBRUARY  
TO SAVE \$4.25 OVER THE SEASON PRICES.  
Call 392-4963 or 392-0374 for More Information

ORGANIC PLANT FOOD CO.

MFRS OF COMMERCIAL FERTILIZERS  
GROFFTOWN RD. Next to Waterworks

## 30th ANNUAL MEETING

LANCASTER COUNTY

FARM BUREAU COOPERATION ASSOC.

When — 7:15 P.M. Thursday, January 7th, 1965 —  
Adjourn promptly at 9:30 P.M.

Where — Manheim Township Sr. High School, Neffsville, Pa.

Agenda — Important Business, Including election of 4 Directors

Guest Speaker — Dr. Milford Heddleson, Extension Agronomist  
of The Pennsylvania State University  
Subject — "Soils and Land Use Planning"

Bring Your Family - Refreshments - Free Gift to all who attend

COOPERATION - PROGRESS

LANCASTER COUNTY FARM BUREAU



Call today  
LANCASTER - 394-0541  
NEW HOLLAND - 354-2146  
QUARRYVILLE - 786-2126

"ANYONE MAY BUY FROM FARM BUREAU"

## SHAVINGS & PEANUT SHELLS

Shavings — Coarse or Fine

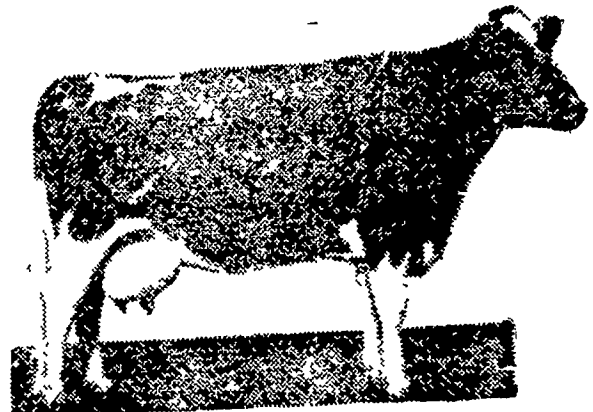
Bagged, Paper or Burlap

Trailer Load Prices — Bagged or Bulk

HAROLD B. ZOOK

Phone 394-5412 Lancaster

220 Lampeter Road



## WIRTHMORE

## Milk Parlor 16

The latest in dairy feeds  
for modern dairymen

- Handles like a pellet — looks like a dairy feed.
- Coarse textured — flake corn, crimped oats pellets
- High in energy — 76 therms



Clem E. Hooper  
Intercourse  
768-3431

Paradise Supply J. K. Stauffer & Son

Paradise  
687-6292

Lawn and Belleaire  
605-3121 — 367-2321