

Weekly Broiler Report

BROILER PLACEMENTS INCREASE 12 PER CENT

Placements of broiler chicks in the Commonwealth during the week ending December 19, totaled 765,000 according to the Pennsylvania Crop Reporting Service. These placements increased 12 per cent from the previous week and 2 per cent from a year ago. Settings for broiler chicks, totaling 1,409,000 eggs, increased 19 per cent from the previous week and 37 per cent from a year earlier. The current 3-week total of eggs set increased 3 per cent from last year. Shipments of

broiler-type chicks during the past 10 weeks totaled 253 thou. or 65% below the comparable period in 1963. Outshipments declined 19 per cent from the comparable period a year ago to 1,414,000.

Placements in the 22 major producing states, totaling 40,079,000 chicks increased 1 per cent from the previous week and 2 per cent from a year ago. Settings of 53,620,000 eggs decreased 1 per cent from the previous week but increased 2 per cent from a year ago. The 3-week total declined 1 per cent from a year ago.

● Vintage

(Continued from Page 2)
COWS: Cutter and Utility 12.00-14.75, 5 head 14.85-15.25, Few Canner 10.00-12.00.
BULLS: Utility to Good 18.85-21.25.

CALVES: 410. Vealers uneven, Utility to Choice 1.00-2.00 Higher; Cull mostly 1.00 lower. Good 31.00-34.00, Few Choice 35.50-36.50, Standard 26.50-31.00, Utility 21.00-26.00, Cull 95-125 lbs 16.50-21.00, 60-90 lbs. 12.00-15.00.

HOGS: 96. Active, Barrows and gilts 1.00-1.50 higher, U.S. 1-2 195-230 lbs. 19.00-19.35, U.S. 1-3 185-250 lbs. 17.85-18.60, U.S. 2-3 Sows 325-500 lbs. 12.25-13.00.

SHEEP: 15. Not enough on sale to fully establish a market. Few Good and Choice woolled lambs 21.00-24.00.

At the hog sale Dec. 19 there were 253 head offered. Market hogs weighing 160-180 lbs. brought 16.00-16.50; 180-200, 17.00-19.25; 200-220, 17.75-19.00, 220-240, 17.60-18.75; 240 and up 15.60-17.60. Sows sold for 10.50-14.35.

● Chicago

(Continued from Page 2)
day. Twelve market receipts 149,000 compared 182,800 week ago and 94,300 a year ago.

Compared last Friday, slaughter steers 1.00-1.25 higher. Heifers 50 to mostly 1.00 up. Cows 1.00-1.50 higher. Bulls 1.00 higher. In the Chicago carlot dressed trade, steer beef steady to 1.00 higher. Heifer beef steady to 1.50 higher. Cow beef steady to 1.50 higher.

Weekly New York Egg Mkt.

From Monday, December 21st to Friday, December 25th

	Mon.	Tues.	Wed.	Thur.	Fri.
WHITE					
Ex. Fcy. Hywts.	37	37	38		
Fcy. Hywts.	34½	34½	35½		
Fcy. Med.	32	32	31		
No. 1 Med.	30	30	30		
Pullets	28	28	28		
Peewees	23	23	23		
BROWN					
Ex. Fcy. Hywts	38½	39	40		
Fcy. Hywts	35	35-35½	36½		
Fcy. Med.	33	33	33		
Pullets	29½	29½	29½		
Peewees	23	23	23		
MIXED					
Fcy. Hywts.	34½	34½	35½		
No. 1 Med.	30	30	30		
Standards	30½-31	30½-31	30-31		
Checks	25	25	25		

Copyrighted 1964 By Urner-Barry Co.

Bulls: Cutter to Commercial closed at 14.00-17.50.
Feeders: Around five load string Choice 750 lb. steers 22.00, few Good and Choice 600-800 lbs. 19.00-21.00.

MASSEY-FERGUSON DEALER WINS TRIP TO MEXICO

Christmas will be around a little longer this year for Mr. and Mrs. Ervin N. Weaver of Leola R1. They are packing for a fiesta trip to Mexico City the middle of January. Mr. Weaver of M.M. Weaver &

Sons, the local Massey-Ferguson dealer, paid their way to Mexico by his sales performance during the past year.

As part of one of the most complicated industrial air charters ever carried out, they will be airlifted into Mexico in company with 300 other dealers from more than 40 take-off points in Canada and the United States. Each group will stay in Mexico four days and then return to their hometowns in aircraft that a few hours before delivered another 300 to attend the product demonstration.

SPRAYING Service

Dairy Barns
Poultry Houses

CARBOLA

Disinfecting White Paint

- Dries White
- Disinfects Against Disease
- 90% Less Cobwebs 8 to 10 Mo.

Fly Spraying

DISINFECT
POULTRY HOUSES
6 Witmer Rd., RA, Lanc.

Maynard Beitzel
Phone 392-7227

NOTE: Due to the Christmas Holiday no report on Delmarva Broilers or on New Holland Fat Cattle Sale are available.

FARM LOANS

Loans for Machinery, Livestock, Cars, Repairs, and any farm purpose.
10 - 35 year Farm Mortgages
Full and part-time farms eligible

FARM CREDIT OFFICE

411 W. Roseville Rd.
Lanc. 398-3921

ACTORS **AC** **IMPLEM**

PARTS SERVICE

Hear about the new Allis-Chalmers Dealer?

That's right — we're your new headquarters for Allis-Chalmers farm equipment and service. And we are sincerely interested in seeing that you get your money's worth in farm equipment.

If you need equipment, come in and talk with us. Or give us a call, and we'll be happy to demonstrate equipment right on your own farm. Let's get acquainted . . . soon!

Ask us about the Allis-Chalmers plan to finance your time purchase of farm equipment.

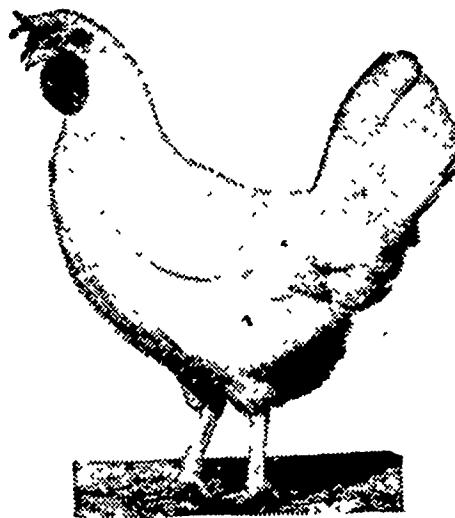
ALLIS-CHALMERS **AC**
SALES & SERVICE

CHET LONG

Akron, Pa.

Ph. 859-1020

POULTRYMEN!



Do you want a more profitable layer operation?

Here is a winning team!

- Wirthmore Hi Energy 17% Layer Mash (A complete feed)
 - Wirthmore Medicated Quickies (in times of stress)
- A highly nutritious feed with added antibiotics.



Clem E. Hooper
Intercourse
768-3481

Paradise Supply

Paradise
687-6202

J. K. Stauffer & Son

Lawn and Bellaire
665-3121 — 367-2321