

FARM BUREAU'S "QUALITY"

PETROLEUM PRODUCTS

GASOLINE — DIESEL FUEL
FUEL OIL

Oil — Grease — Petroleum Equipment

- Home Heating Plan
- Budget Payment Plan
- Pump and Tank Contract Program
- Complete Petroleum Services



FOR FAST, FRIENDLY DELIVERY CALL
LANCASTER COUNTY FARM BUREAU

CLOSED DEC. 25th and Dec. 26th



Lancaster - 394-0541
New Holland - 354-2146
Quarryville - 786-2126

"ANYONE MAY BUY FROM FARM BUREAU"

(Continued from Page 1)
and the respective acreage each will be placing under conservation are as follows: Noah W. Kreider & Sons, Manheim R3 (587); Henry Berg, Elizabethtown R1 (81.5);

Mark H. Merkey, Manheim R2 (94); Charles H. Wolf, East Petersburg (4); Vincent H. Hoover, New Providence RD (75); Marvin W. Zimmerman, Denver R1 (73); John Hoover,

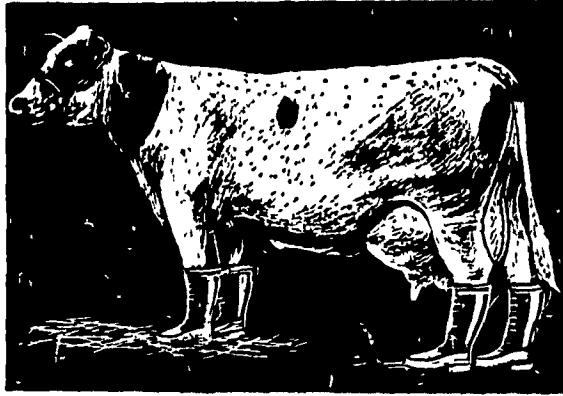
Denver R1 (78); Benjamin M. Hoover, Denver R1 (20); Frank Z. Hersh, Molinton R2 (78); Luke Good, Litz R3 (60); Martin W. Zimmerman, Ephrata R2 (55); Lester Hollinger, Denver R1 (22); Amor S. Hurst, Denver R1 (41); Alvin H. Martin, Ephrata R2 (48). Total new conservation acreage represented by these cooperators was 1,314.5 acres.

The Directors reported that they had 26 per cent more new cooperators sign up this year than in 1963.

The bulk of the meeting was devoted to the task of scheduling the District's activities for the coming year. This was done on a month by month basis. Among these activities the Directors included 10 district watershed meetings. These will be divided between Spring and Fall meetings, and the locations will be announced in advance of each meeting.

A list of potential associate directors for the coming year was compiled. After approaching each of these candidates, a final list of the new associate directors, and their respective duties, will be assembled in February.

The next meeting of the District Directors was scheduled for January 18, a week later than usual because of Farm Show Week. At that meeting officers will be elected for 1965.



A cow with boots . . .

Farmers know that cattle must have dry feet. MARTIN'S BARN-DRI dries damp and wet floors immediately.

MARTIN'S BARN-DRI also helps prevent costly animal loss by reducing slipping when floors are wet.

Use MARTIN'S BARN-DRI for all animals — cattle, hogs, horses, chickens, pets, others. Scatter by hand or shovel. Buy by the bag or ton.

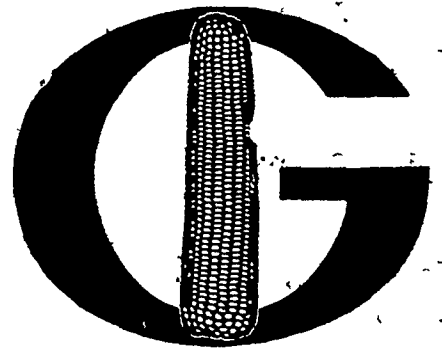
Ivan M. Martin, Inc.

BLUE BALL, PA.

Terre Hill 445-3455
New Holland 354-2112
Gap Hickory 2-4148



FUNK'S



HYBRID

HIGH PROFIT CORN

... Key to
HIGHER PROFIT FARMING

Thousands of farmers have proven the 3-step corn growing plan below. It is the safest, easiest, most reliable way to insure your farm-wide profits. Plan now for higher corn yields next season . . .

Use this trio of high profit practices:

- 1 Start with a high capacity **FUNK'S G-HYBRID**
- 2 PLANT IT THICKER
- 3 APPLY EXTRA FERTILIZER to feed the extra plants

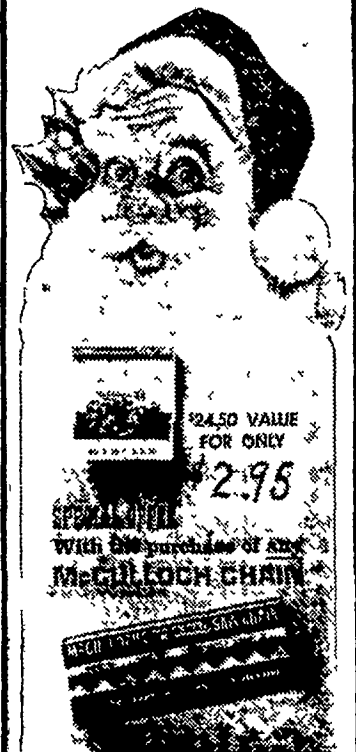
Let your Hoffman Seed Man start you toward higher profit yields on all your farm crops.

A. H. Hoffman Seeds, Inc.

Landisville, Pa.
Phone 898-3421

One statement that sounds like an old wife's tale is actually a scientific fact. You really can tell the temperature by listening to the chirp of the cricket. Both field and tree crickets vary the speed of their chirps with the temperature. One can estimate the temperature by counting the number of chirps per minute, dividing by 4, and add 40.

AMAZING OFFER
at Most McCULLOCH
CHAIN SAW DEALERS
WRIST WATCH —
Stainless Steel Back,
Anti-Magnetic
Limited Quantities



McCulloch Saw Chain Fits All Make and Model Chain Saws

Landis Bros., Inc.

1305 Manheim Pike (1 Mile North of Lanc. on Rt. 72)
Lancaster Ph. 393-3906