

# Weekly Broiler Report

## Placements In Commonwealth Decline

Placements of broiler chicks in the Keystone State by hatcherymen during the week ending November 21, totaled 844,000 according to the Pennsylvania Crop Reporting Service. This was a decrease of 14 percent from the previous week but an increase of 5 percent from a year ago. The 10-week total was 4 percent above the comparable period a year ago. Settings for broiler chicks, totaling 1,230,000 eggs, were 3 percent below the previous week and 7 percent below a year earlier. The 3-week total was 6 percent below last year. Inshipments of broiler-type chicks the past 10 weeks totaled 365,000 or 56 percent below the comparable period

in 1963. Outshipments of 1,402,000 were down 12 percent

Placements in the 22 major producing states, totaling 38,005,000 chicks, were about the same as the previous week and a year ago. The 10-week total was 3 percent above last year. Settings of 53,347,000 eggs increased 1 percent from the previous week but was about the same as a year ago. The 3-week total was 1 percent below a year ago.

### Eastern Pa. and N.J.

Supplies of light type hens decreased in N.J. and barely adequate in Eastern Pa. Offerings ample and movement continues relatively heavy. Demand good although some processors re-scheduling due to Thanksgiving holiday. Offerings (Continued on Page 7)

## Delmarva

Broiler and fryer live prices advanced slow with a good demand for moderate auction offerings. Highest prices were paid for lots with extended pick-up dates.

Ready-to-cook demand fair to good on prior commitments. New business slowly developing for next week at competitive prices with many buyers using a wait-and-see attitude. Delivered prices ranged from 1/2 cent higher to mostly unchanged.

Estimated slaughter for Friday and Saturday, 774,000 head compared to 496,000 head last weekend. Prices paid and reported purchases for the 48-hour period ending 10:30 a.m. Friday, broilers and fryers, 145-156; 1,148,700 head, including 419,200 head purchased of 481,000 head offered at Eastern Poultry Growers Exchange Wednesday

# Weekly New York Egg Mkt.

From Monday, November 23rd to Friday, November 27th

	Mon.	Tues.	Wed.	Thur.	Fri.
<b>WHITE</b>					
Ex Fcy. Hywts.	36-36½	35½-36½	36½		36½
Fcy. Hywts.	32	32	32		32
Fcy Med	26	25½	25½		25½
No. 1 Med.	25½	25	25		25
Pullets	22½	22	22		22
Peewees	19	19	19		19
<b>BROWN</b>					
Ex. Fcy Hywts	36½-37	36	36		36
Fcy Hywts.	35	34	34		34
Fcy. Med.	27½	27	27		25
Pullets	23½	23	23		23
Peewees	19	19	19		19
<b>MIXED</b>					
Fcy. Hywts.	32	32	32		32
No. 1 Med.	25½	25	25		25
Standards	31	30-31	30-31		30-31
Checks	25	25	25		25

TREND: Market still very irregular both on demand and supply with offerings generally ample for all needs.

Copyrighted 1964 By Urner-Barry Co.

## Area Holsteins Set New Production Levels

The Holstein Friesian Association of America recently reported that the cows in county herds had new, officially recognized milk and butterfat records:

Spring Lawn Triumph Wovaton 4295220, a six-year-old, owned by Jay C. Garber, Lancaster, produced 19,839 lbs. of milk and 714 lbs. of butterfat in 365 days.

Elroc Patsy Follow On 39-000 lbs. of milk and 647 lbs. of butterfat in 305 days.

by H. E. & Maybelle Kettering, Lititz, produced 15,830 lbs. of milk and 627 lbs. of butterfat in 327 days.

Lady Rag Apple Butter Girl 4629675, a five-year-old, owned by Vernon R. Umble, Parkesburg, produced 15,228 lbs. of milk and 664 lbs. of butterfat in 279 days.

Valley Run Lad Irene 48-21279, a four-year-old, owned by Arthur D. & Mary K. Wenger, Manheim, produced 20,000 lbs. of milk and 647 lbs. of butterfat in 305 days.



Here is just one of nearly 300 test pens of cattle used to develop the new Special Steer Fatenas at Purina's Research Farm. Four years of testing involved more than 2500 test cattle.

# Here's News For Cattle Feeders!

## Purina's New "Built-To-Fit" Special Steer Fatenas

Each of these new cattle supplements is formulated for a specific kind of grain and roughage. Even the size of your cattle is considered in selecting the right one for you to feed!

Results? These new Special Steer Fatenas have set all-time Purina performance records in 4 years of tests. For example, the new Steer Fatena "Built-to-Fit" corn or milo rations, fed with poor quality roughages, produced 6.4% faster gains on 10.7% less feed! These extra results were worth \$11.40 more per steer on a \$20 cattle market with 700 lb. yearlings fed 120 days!

The new Steer Fatena "Built-to-Fit" barley rations produced equally high results at a lower feed cost than ever before!

Whether you bunk-feed or self-feed your cattle, there's a new Special Steer Fatena "Built-to-Fit" your own feeding conditions. Come in and find out which is formulated to step up your feeding efficiency!

John J. Hess, II  
Paradise

John B. Kurtz  
Cedar Lane

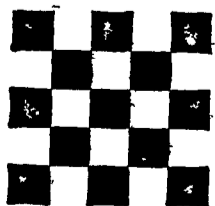
James High  
Gordonsville

John B. Kurtz  
Ephrata

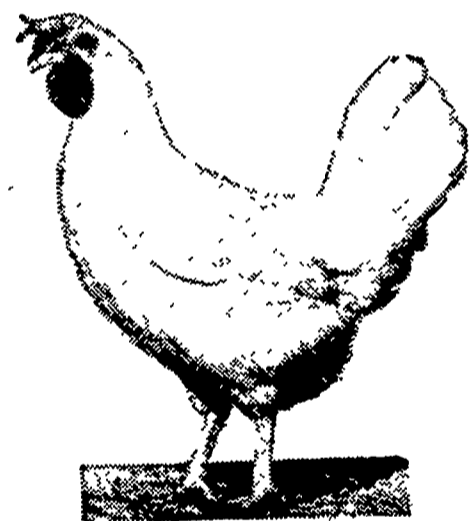
Ira B. Landis  
Valley Road, Lancaster  
Wenger's Feed Mill, Inc.  
Rheems

Whiteside & Weickset  
Kirkwood

S. H. Hiestand & Co.  
Salunga



Built-to-Fit your cattle . . .  
your grain . . . your roughage!



# WIRTHMORE

ANNOUNCES

Laying Program

For The Coming Year

- Hi-Ener G 17 — (17% Protein) — to be fed till 6-8 weeks past peak production
- Hi-Ener G 16 — (16% Protein) — to be fed rest of laying year.
  - Both feeds high in energy and seasonably formulated
  - Available bags or bulk — mash, crumbles or pellets
  - Both complete rations — no supplemental feed necessary
  - Priced favorably



Clem E. Hooper

Intercourse  
768-3481

Paradise Supply

Paradise  
687-6292

J. K. Stauffer & Son

Lawn and Bellaire  
665-3121 — 367-2321